

# The Azalea

Vista Run

TIM O'BRIEN<sup>®</sup>  
homes

**Call Today**  
(262) 239-7342



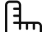
## Call for Price

**Home Style:** First Floor Primary

3 Elevations Available

 4 - 5 Bedroom

 2.5 - 4 Bathrooms

 3,003 Sq. Ft.

 2 - 3 Car Garage

 49 HERS Score

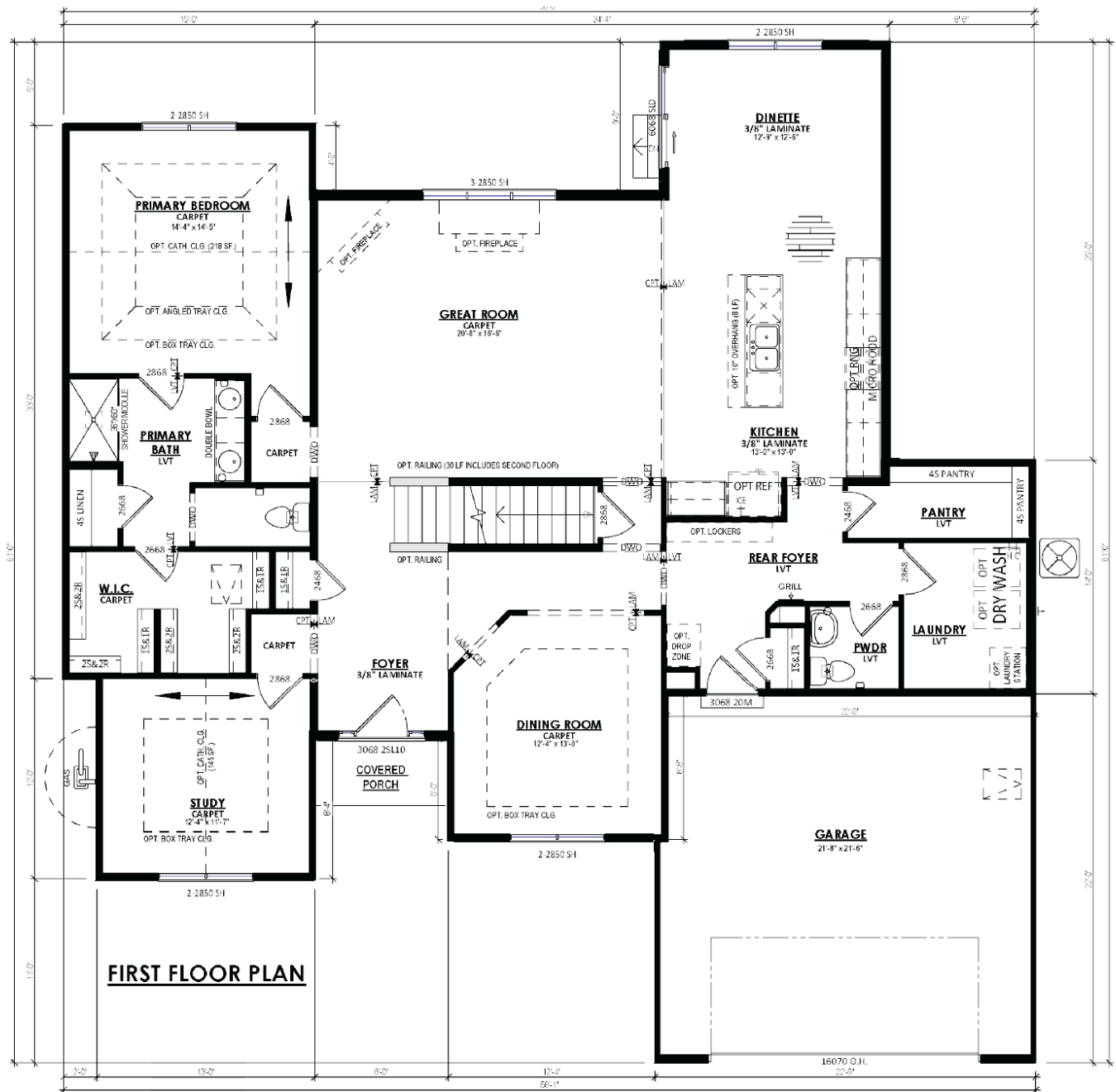
The Azalea offers a standout design with a first-floor Primary Suite and boasts an awe-inspiring two-story Foyer and Great Room. One wing of the house holds a Flex Room and the Primary Suite, featuring a spacious walk-in closet accessed via the elegantly appointed Bathroom. The other side showcases a well-equipped Kitchen, a luminous Breakfast Nook, and a practical Rear Foyer complete with pantry, Powder Room, and Laundry Room. At the heart of the first floor lies a separate dining space, a Great Room with soaring ceilings, and a staircase leading to the upper level. The second floor offers three additional bedrooms, each with walk-in closets. It further enhances the living experience with a loft and a walkway, overlooking the impressive Great Room below.

## Vista Run



**TIM O'BRIEN<sup>®</sup>**  
*homes*

**Call Today**  
**(262) 239-7342**



## Vista Run



TIM O'BRIEN<sup>®</sup>  
homes

**Call Today**  
(262) 239-7342

