

W242N5618 Peppertree Dr S

Sussex, WI 53089

TIM O'BRIEN
homes





Call Today
(262) 239-7342

UNDER CONSTRUCTION



Call for Price

Neighborhood: Sussex Preserve
W240N5612 Daisy Ct, Sussex, WI

-  4 Bedrooms
-  2.5 Bathrooms
-  2,624 Sq. Ft.
-  3 Car Garage

The information, text, graphics and links provided herein are provided by Tim O'Brien Homes as a convenience to its customers. Tim O'Brien Homes does not guarantee the accuracy or completeness of the information, text, graphics, links and other items contained on this website or any other website. All prices, promotions and specifications are subject to change at any time without notice based on the discretion of Tim O'Brien Homes.

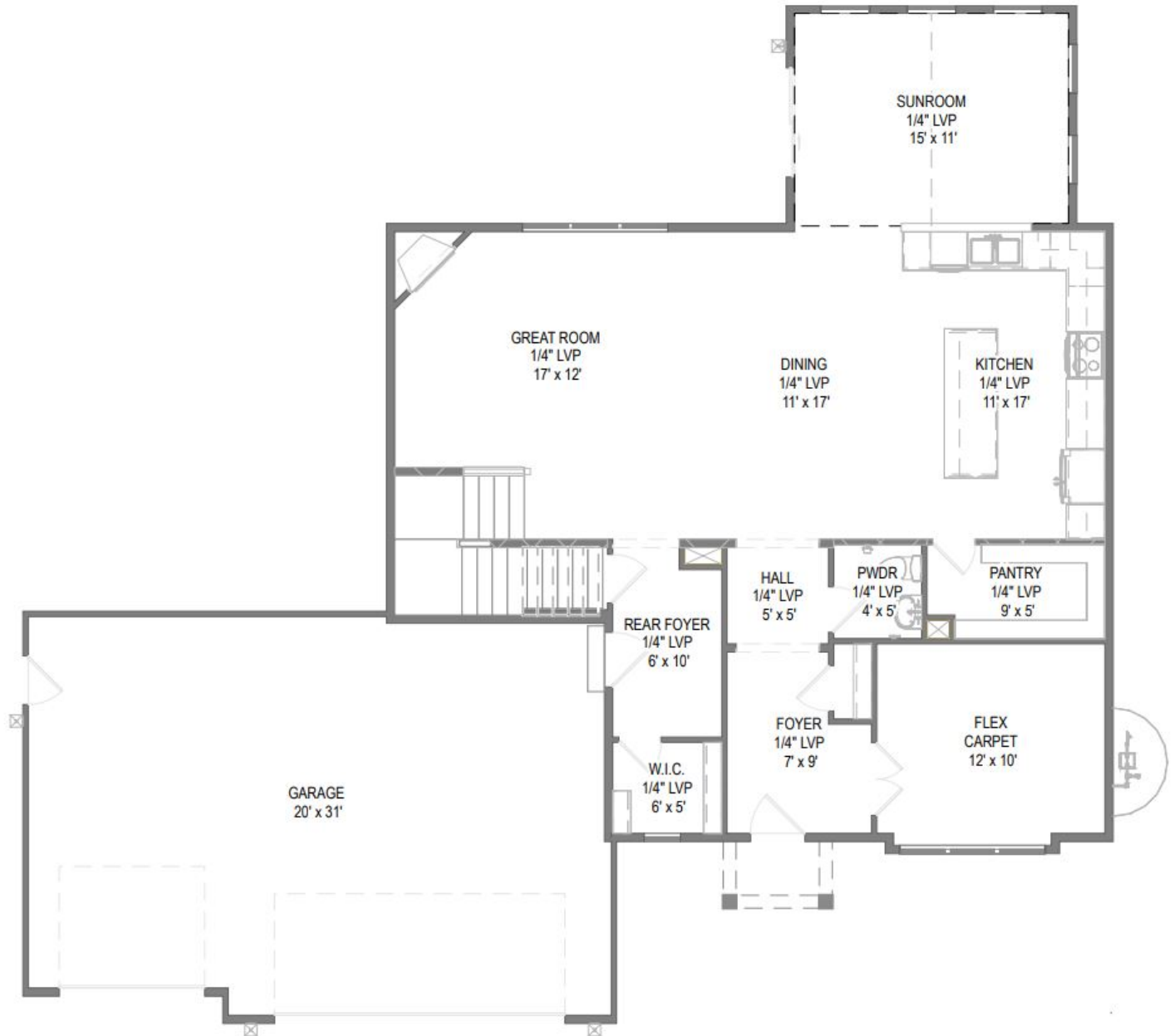


W242N5618 Peppertree Dr S

Sussex, WI 53089

TIM O'BRIEN
homes

Call Today
(262) 239-7342



The information, text, graphics and links provided herein are provided by Tim O'Brien Homes as a convenience to its customers. Tim O'Brien Homes does not guarantee the accuracy or completeness of the information, text, graphics, links and other items contained on this website or any other website. All prices, promotions and specifications are subject to change at any time without notice based on the discretion of Tim O'Brien Homes.

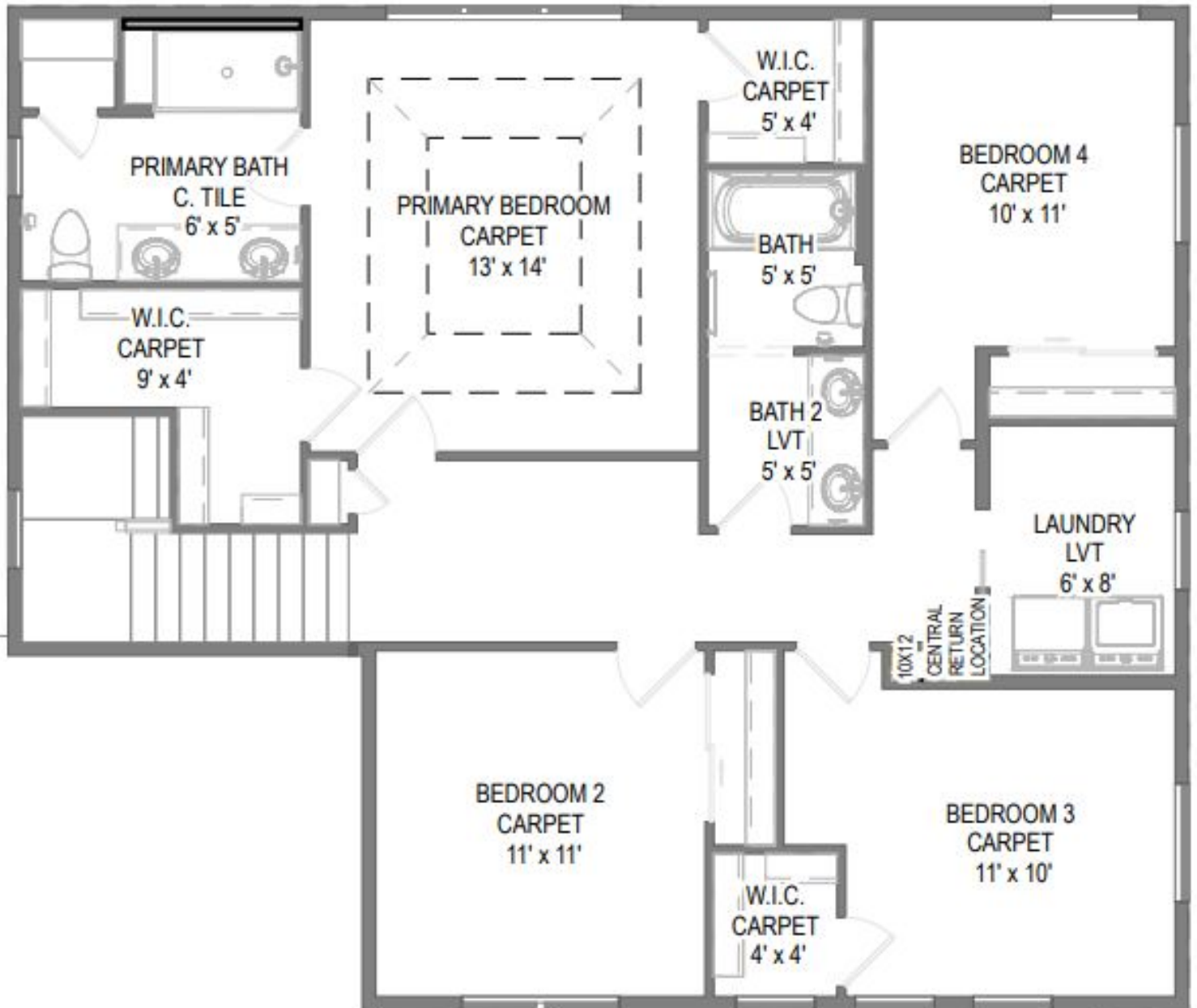


W242N5618 Peppertree Dr S

Sussex, WI 53089

TIM O'BRIEN homes

Call Today
(262) 239-7342



The information, text, graphics and links provided herein are provided by Tim O'Brien Homes as a convenience to its customers. Tim O'Brien Homes does not guarantee the accuracy or completeness of the information, text, graphics, links and other items contained on this website or any other website. All prices, promotions and specifications are subject to change at any time without notice based on the discretion of Tim O'Brien Homes.

