

# 994 Autumn Blaze Way

Oregon, WI 53575

TIM O'BRIEN  
homes

Call Today  
(608) 480-5963

MOVE-IN READY

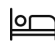





PRICED AT

## \$624,900

**Neighborhood:** Autumn Ridge  
Oregon, WI

**Home Plan:** The Lavender

 4 Bedrooms  
 3.0 Bathrooms  
 2,722 Sq. Ft.  
 2 Car Garage

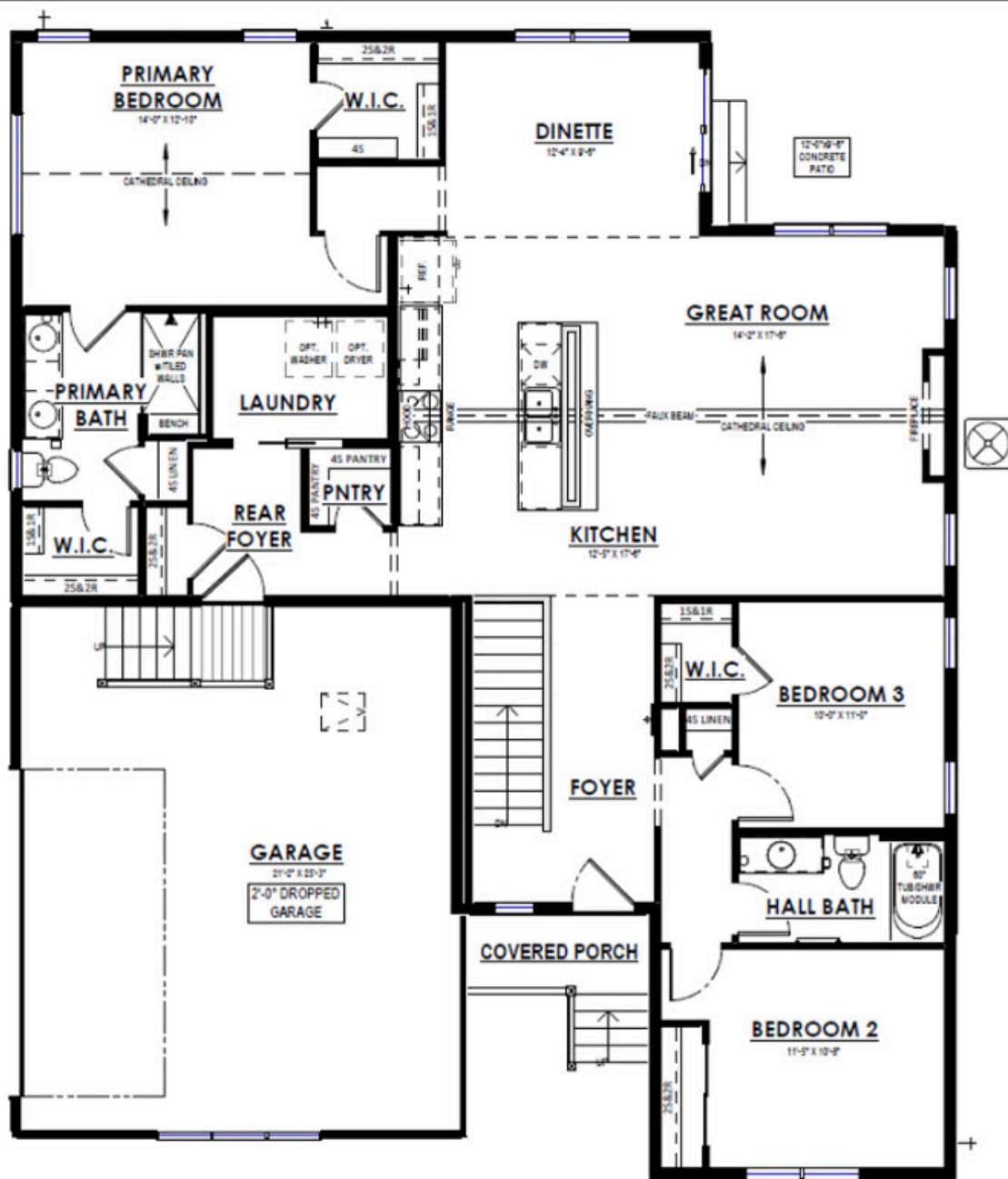
The Lavender is a thoughtfully designed ranch plan that combines efficiency with charm. Upon entering through the front foyer, you'll immediately notice a dedicated hallway leading to two well-sized secondary bedrooms, offering privacy and comfort. The Lavender's main living area boasts an L-shaped design that's perfect for family time and hosting friends. The kitchen is a standout feature, providing not only ample storage but also a sweeping view of both the great room and the backyard, courtesy of the dinette's large windows. This setup ensures you're never far from the action, whether you're cooking or simply enjoying the view. Tucked away through a private hallway off the dinette is the Primary bedroom, a true retreat within the home. It's thoughtfully laid out with two walk-in closets and an adjoining Primary bathroom, creating a personal haven that's both spacious and functional. The rear foyer, likely to be your most-used entry point, is designed with everyday life in mind. It offers ample space, including an optional drop zone for added convenience. This area also features a sizeable laundry room and direct access to the pantry, streamlining daily tasks and keeping your living spaces clutter-free. In every aspect, The Lavender is designed to make life more comfortable, efficient, and enjoyable, making it an ideal choice for those seeking a blend of style and practicality in their home.

# 994 Autumn Blaze Way

Oregon, WI 53575

**TIM O'BRIEN**  
homes

**Call Today**  
(608) 480-5963



**FIRST FLOOR PLAN**