

1283 Violet Street

Oconomowoc, WI 53066

TIM O'BRIEN
homes

Call Today
(262) 239-7342

UNDER CONSTRUCTION

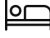





PRICED AT

\$584,900

Neighborhood: Prairie Creek Ridge
Oconomowoc, WI

Home Plan: The Lavender

 3 Bedrooms
 2.0 Bathrooms
 1,788 Sq. Ft.
 3 Car Garage

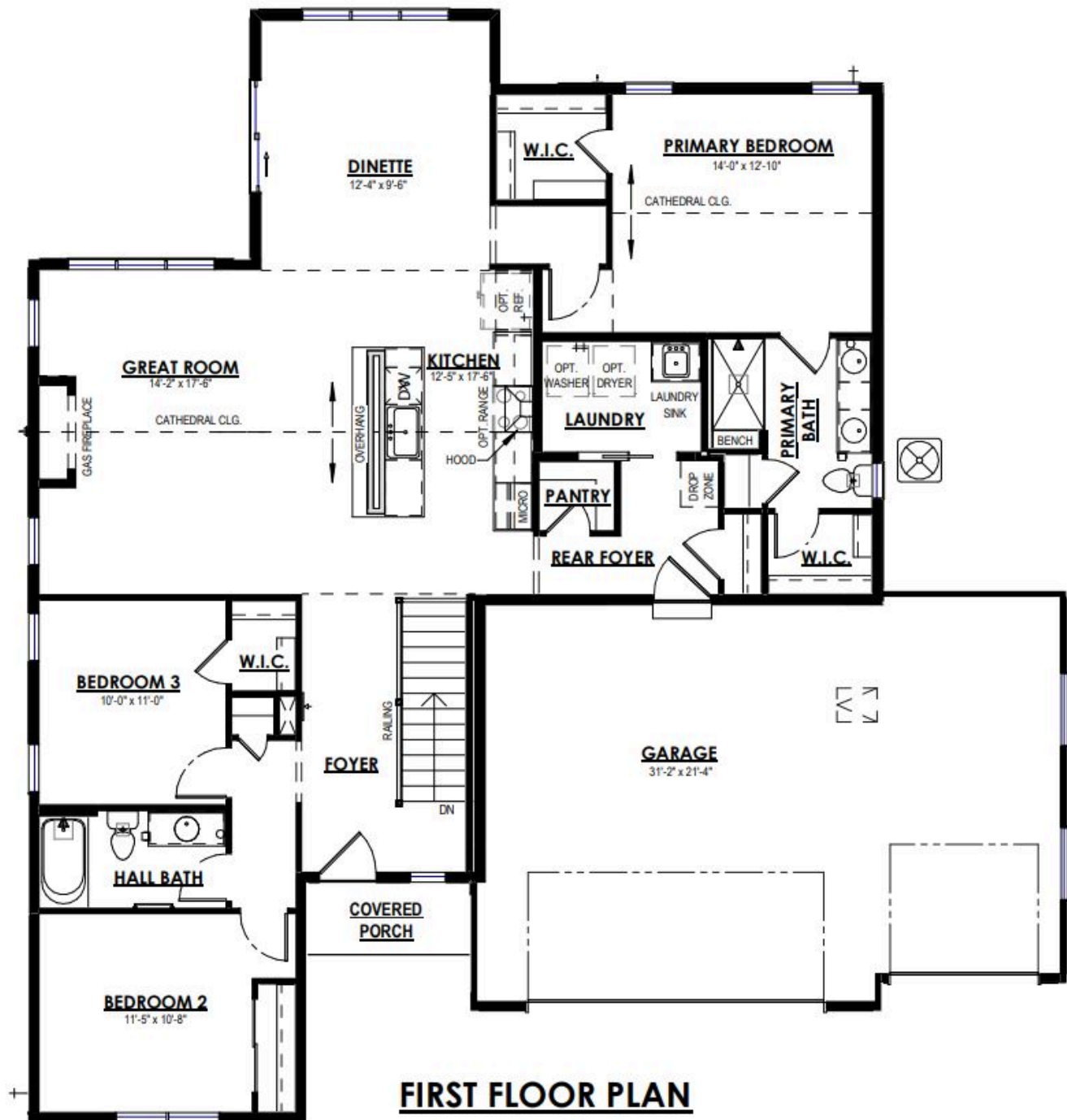
The Lavender is a thoughtfully designed ranch plan that combines efficiency with charm. Upon entering through the front foyer, you'll immediately notice a dedicated hallway leading to two well-sized secondary bedrooms, offering privacy and comfort. The Lavender's main living area boasts an L-shaped design that's perfect for family time and hosting friends. The kitchen is a standout feature, providing not only ample storage but also a sweeping view of both the great room and the backyard, courtesy of the dinette's large windows. This setup ensures you're never far from the action, whether you're cooking or simply enjoying the view. Tucked away through a private hallway off the dinette is the Primary bedroom, a true retreat within the home. It's thoughtfully laid out with two walk-in closets and an adjoining Primary bathroom, creating a personal haven that's both spacious and functional. The rear foyer, likely to be your most-used entry point, is designed with everyday life in mind. It offers ample space, including an optional drop zone for added convenience. This area also features a sizeable laundry room and direct access to the pantry, streamlining daily tasks and keeping your living spaces clutter-free.

1283 Violet Street

Oconomowoc, WI 53066

TIM O'BRIEN
homes

Call Today
(262) 239-7342



The information, text, graphics and links provided herein are provided by Tim O'Brien Homes as a convenience to its customers. Tim O'Brien Homes does not guarantee the accuracy or completeness of the information, text, graphics, links and other items contained on this website or any other website. All prices, promotions and specifications are subject to change at any time without notice based on the discretion of Tim O'Brien Homes.

