

The Savannah

Quarry Park

TIM O'BRIEN
homes

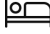
Call Today
(262) 239-7342



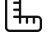
Call for Price

Home Style: Ranch

4 Elevations Available

 3 - 4 Bedroom

 2.5 Bathrooms

 2,441 Sq. Ft.

 2 Car Garage

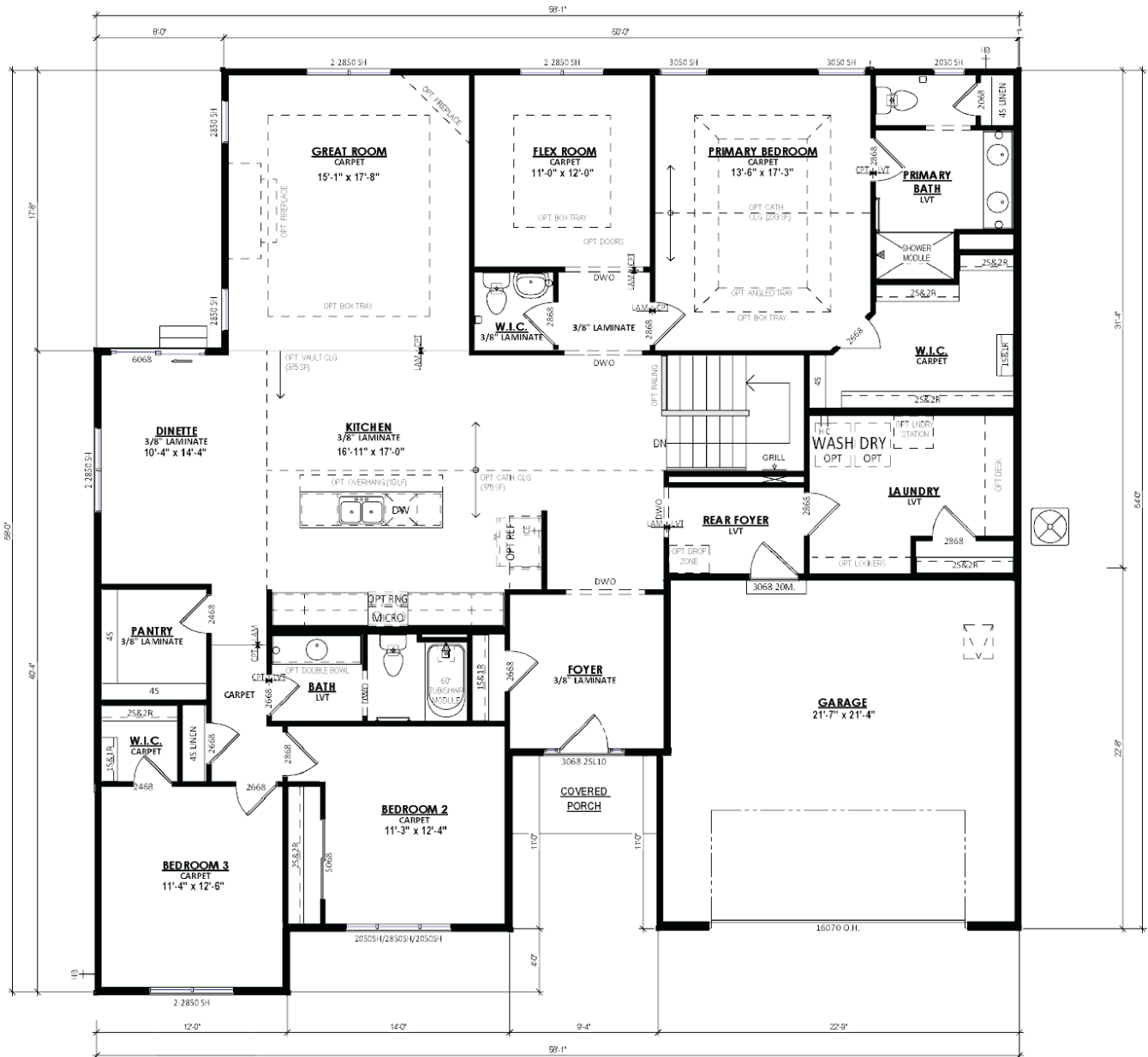
 49 HERS Score

Embrace spacious and efficient living with The Savannah, a sprawling split-bedroom ranch design. A generous Front Foyer, equipped with convenient coat closets, ushers you into a distinct living area. Here, a Kitchen featuring an extended island flawlessly merges with a Dinette and a Great Room, crafting an open space ideal for family time or entertaining guests. Tucked towards the back of the home, you'll find a versatile Flex Room and a Powder Room, strategically located near the private Primary Suite. This relaxing retreat boasts an oversized, angled-entry walk-in closet and a private bathroom, complete with a pocket door leading to a separate toilet room. The Rear Foyer serves as a practical passage to the Garage and provides another pocket door to a large Laundry Room. At the front corner, on the opposite side of the home, two secondary bedrooms share a full Jack & Jill bathroom, offering both privacy and convenience. With The Savannah, enjoy a harmonious blend of comfort, function, and style.

The Savannah

Quarry Park

Call Today
(262) 239-7342



The information, text, graphics and links provided herein are provided by Tim O'Brien Homes as a convenience to its customers. Tim O'Brien Homes does not guarantee the accuracy or completeness of the information, text, graphics, links and other items contained on this website or any other website. All prices, promotions and specifications are subject to change at any time without notice based on the discretion of Tim O'Brien Homes.

