

5973 S Quarry Park Ct

New Berlin, WI 53146

TIM O'BRIEN
homes

Call Today
(262) 239-7342

UNDER CONSTRUCTION



PRICED AT

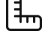
\$824,900

Neighborhood: Quarry Park
New Berlin, WI

Home Plan: The Monterey

 4 Bedrooms

 2.5 Bathrooms

 2,583 Sq. Ft.

 3 Car Garage

The Monterey is a spacious two-story home with a one-of-a-kind front exterior that really stands out. As you enter, you're greeted by a two-story Foyer that leads to a Flex Room. A wide entryway and a nearby Powder Room make this area both welcoming and functional. The home boasts an open-concept design where the large Kitchen, Dinette, and Great Room blend seamlessly, extending out the side for extra space and light. Stairs to the second floor are conveniently tucked away at the back, near the Rear Foyer. This area also includes a walk-in pantry and a walk-in closet, with easy access to the Laundry Room. Upstairs, you'll find three secondary bedrooms sharing a full bathroom. The large Primary Suite comes with its own private bathroom and a uniquely angled walk-in closet that adds a touch of luxury.

The information, text, graphics and links provided herein are provided by Tim O'Brien Homes as a convenience to its customers. Tim O'Brien Homes does not guarantee the accuracy or completeness of the information, text, graphics, links and other items contained on this website or any other website. All prices, promotions and specifications are subject to change at any time without notice based on the discretion of Tim O'Brien Homes.

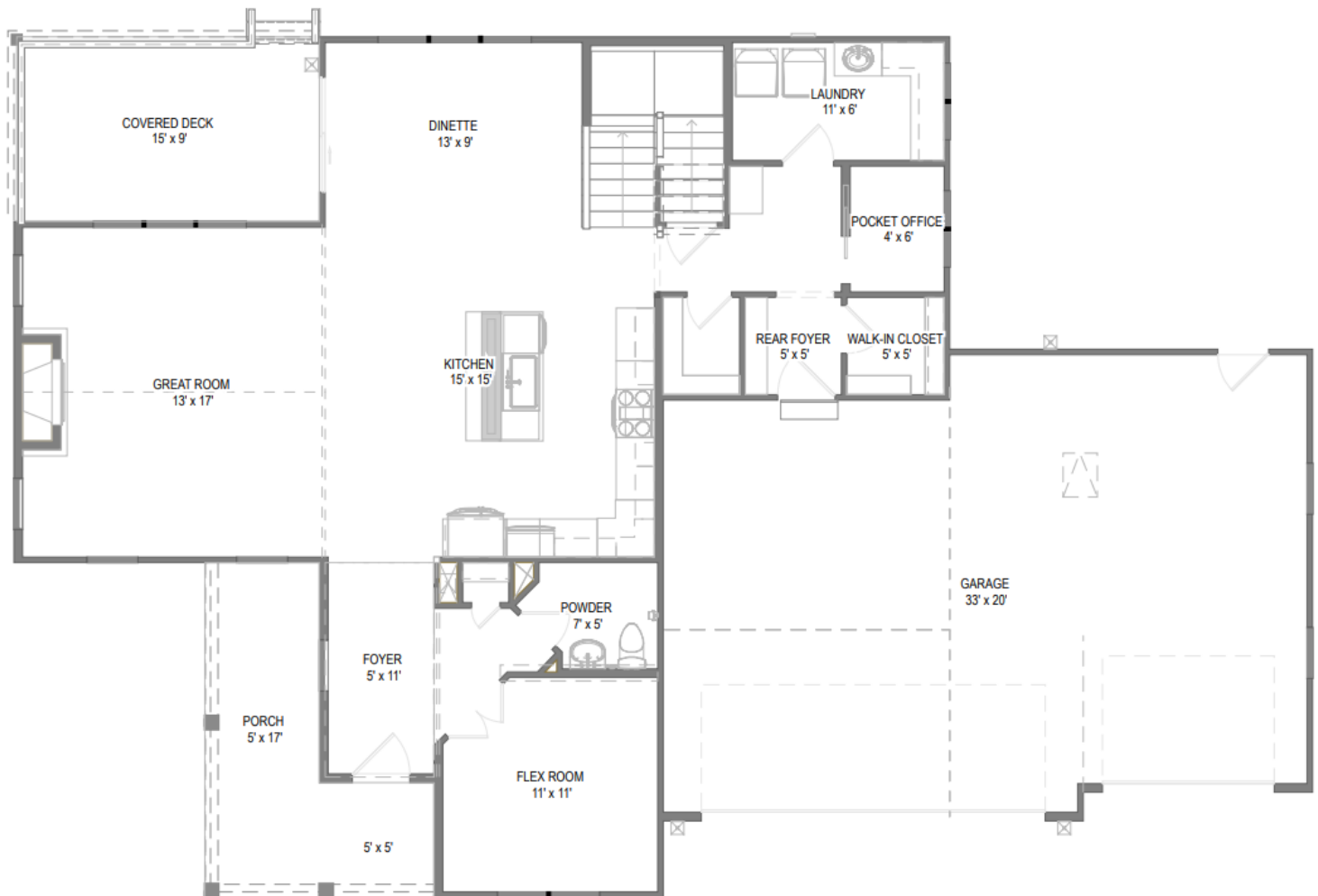


5973 S Quarry Park Ct

New Berlin, WI 53146

TIM O'BRIEN
homes

Call Today
(262) 239-7342



The information, text, graphics and links provided herein are provided by Tim O'Brien Homes as a convenience to its customers. Tim O'Brien Homes does not guarantee the accuracy or completeness of the information, text, graphics, links and other items contained on this website or any other website. All prices, promotions and specifications are subject to change at any time without notice based on the discretion of Tim O'Brien Homes.

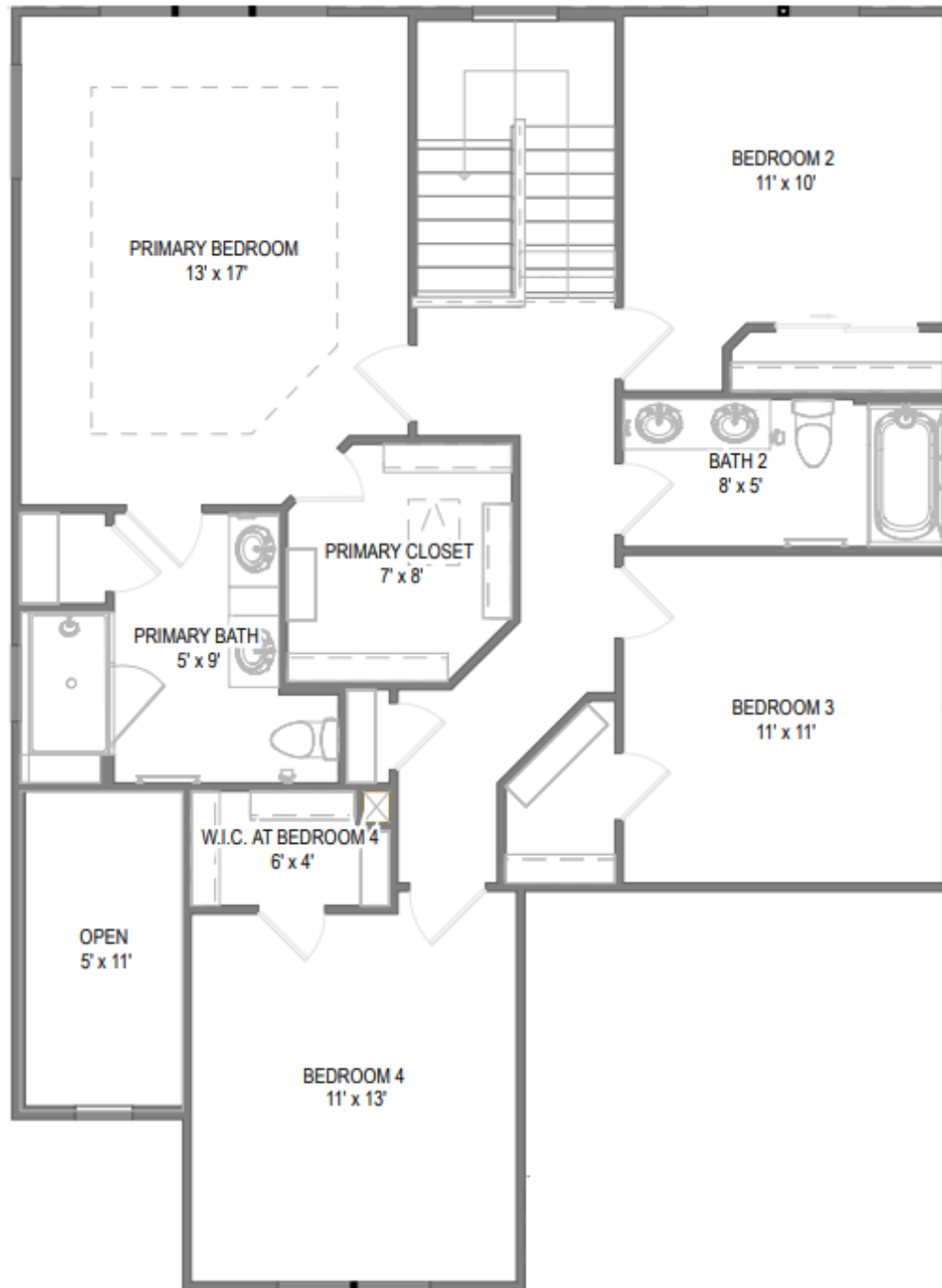


5973 S Quarry Park Ct

New Berlin, WI 53146

TIM O'BRIEN
homes

Call Today
(262) 239-7342



The information, text, graphics and links provided herein are provided by Tim O'Brien Homes as a convenience to its customers. Tim O'Brien Homes does not guarantee the accuracy or completeness of the information, text, graphics, links and other items contained on this website or any other website. All prices, promotions and specifications are subject to change at any time without notice based on the discretion of Tim O'Brien Homes.

