

The Kendall

Kirkland Crossing

TIM O'BRIEN
homes

Call Today
(262) 239-7342



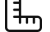
Call for Price

Home Style: Ranch

3 Elevations Available

 3 - 4 Bedroom

 2.5 Bathrooms

 2,117 Sq. Ft.

 2 - 3 Car Garage

 49 HERS Score

The Kendall is a split-bedroom ranch that stands out with its distinct Flex Room situated at the home's front. Its broad entryway directs attention towards the main living space. The Great Room serves as a gateway to the secondary bedrooms, which are conveniently separated by a full bathroom featuring a linen closet. The generous Dinette, located off the Kitchen, extends out the back of the home, providing a sunroom-like atmosphere. On the opposite side, a Rear Foyer with a pocket door leads to the Laundry Room. The spacious Primary Suite, a real showstopper, boasts two walk-in closets, an en suite bathroom, and scenic views to the backyard.



The information, text, graphics and links provided herein are provided by Tim O'Brien Homes as a convenience to its customers. Tim O'Brien Homes does not guarantee the accuracy or completeness of the information, text, graphics, links and other items contained on this website or any other website. All prices, promotions and specifications are subject to change at any time without notice based on the discretion of Tim O'Brien Homes.

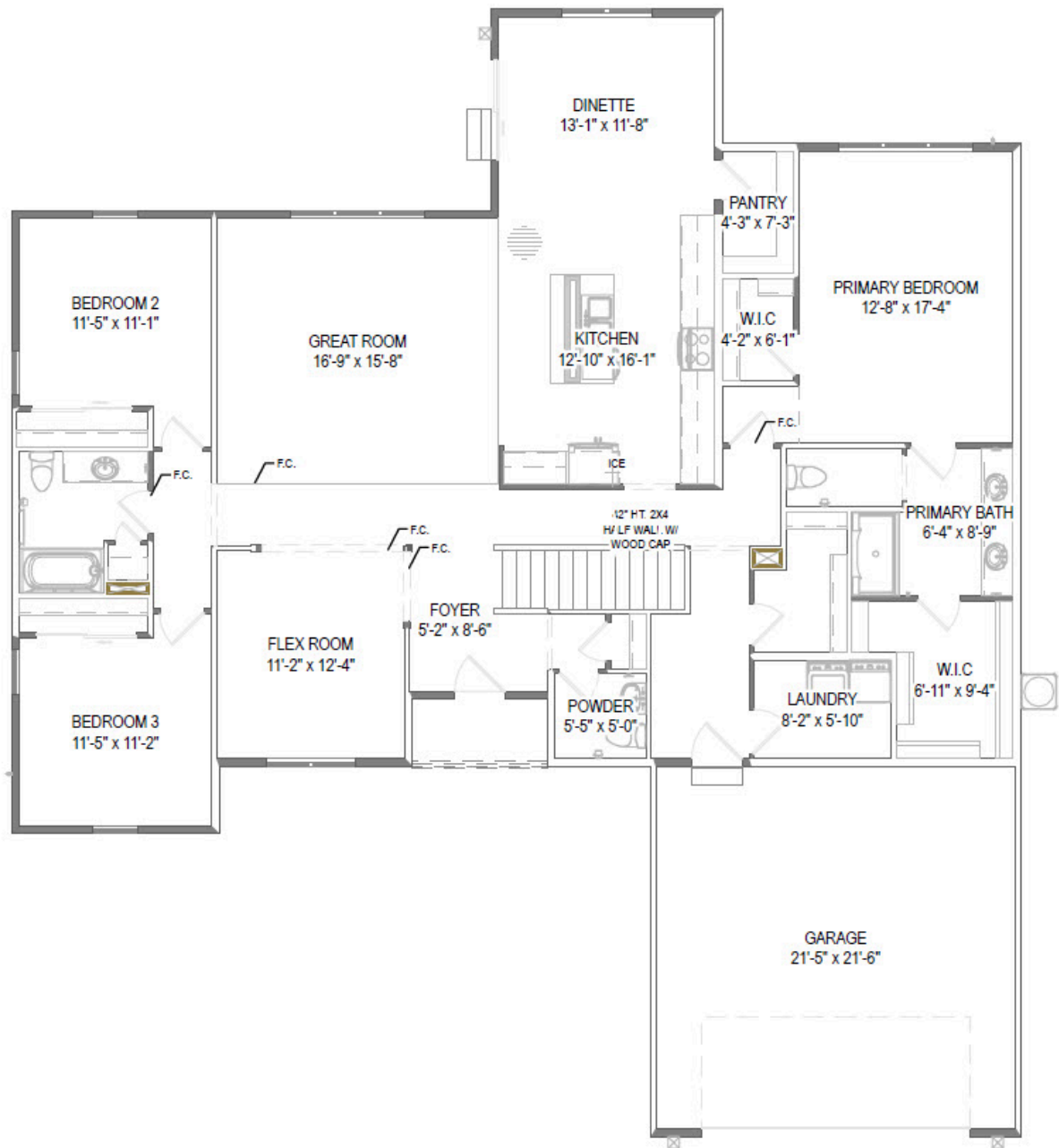


The Kendall

Kirkland Crossing

TIM O'BRIEN[®]
homes

Call Today
(262) 239-7342



First Floor