

# The Juneberry

Kirkland Crossing

TIM O'BRIEN  
homes

Call Today  
(262) 239-7342



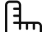
## Call for Price

**Home Style:** Two-Story

3 Elevations Available

 4 Bedroom

 2.5 Bathrooms

 2,590 Sq. Ft.

 2 - 3 Car Garage

 49 HERS Score

This two-story home features an open-concept main floor designed for effortless entertaining and everyday living. The spacious kitchen includes a large island and walk-in pantry, flowing seamlessly into the dining area and great room. A rear foyer with built-in storage and a conveniently located powder room keeps daily routines organized and efficient. The flex room near the front entry offers the perfect space for a home office, playroom, or guest bedroom. Upstairs, The Juneberry continues to impress with a centrally located family room—ideal as a media room, homework zone, or cozy retreat. The private primary bedroom includes a walk-in closet and a dual-vanity bath for a relaxing escape. Three additional bedrooms, a second full bath, and a laundry room complete the upper level, providing comfort and convenience for every member of the household.



The information, text, graphics and links provided herein are provided by Tim O'Brien Homes as a convenience to its customers. Tim O'Brien Homes does not guarantee the accuracy or completeness of the information, text, graphics, links and other items contained on this website or any other website. All prices, promotions and specifications are subject to change at any time without notice based on the discretion of Tim O'Brien Homes.

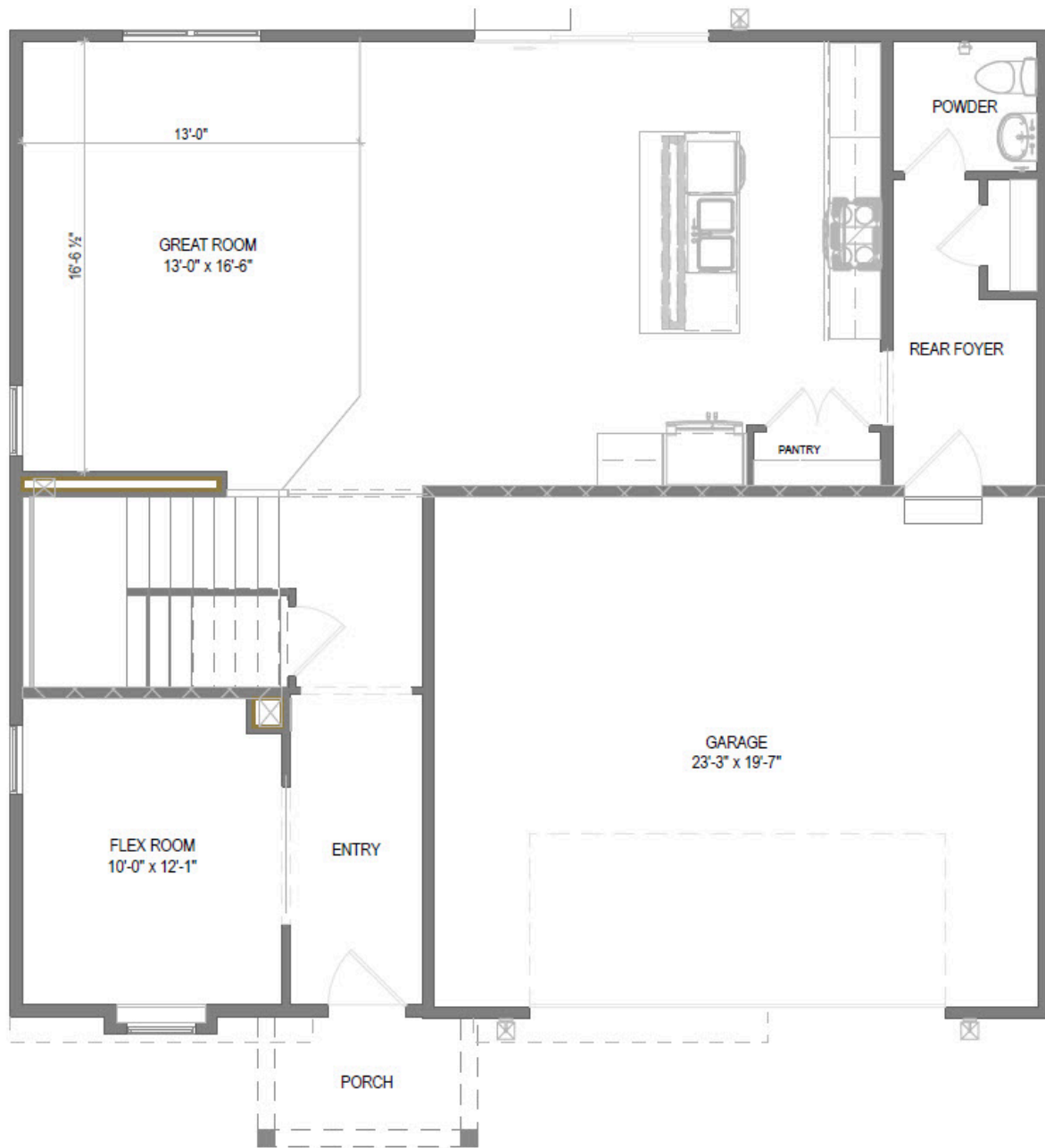


# The Juneberry

Kirkland Crossing

TIM O'BRIEN<sup>®</sup>  
homes

Call Today  
(262) 239-7342



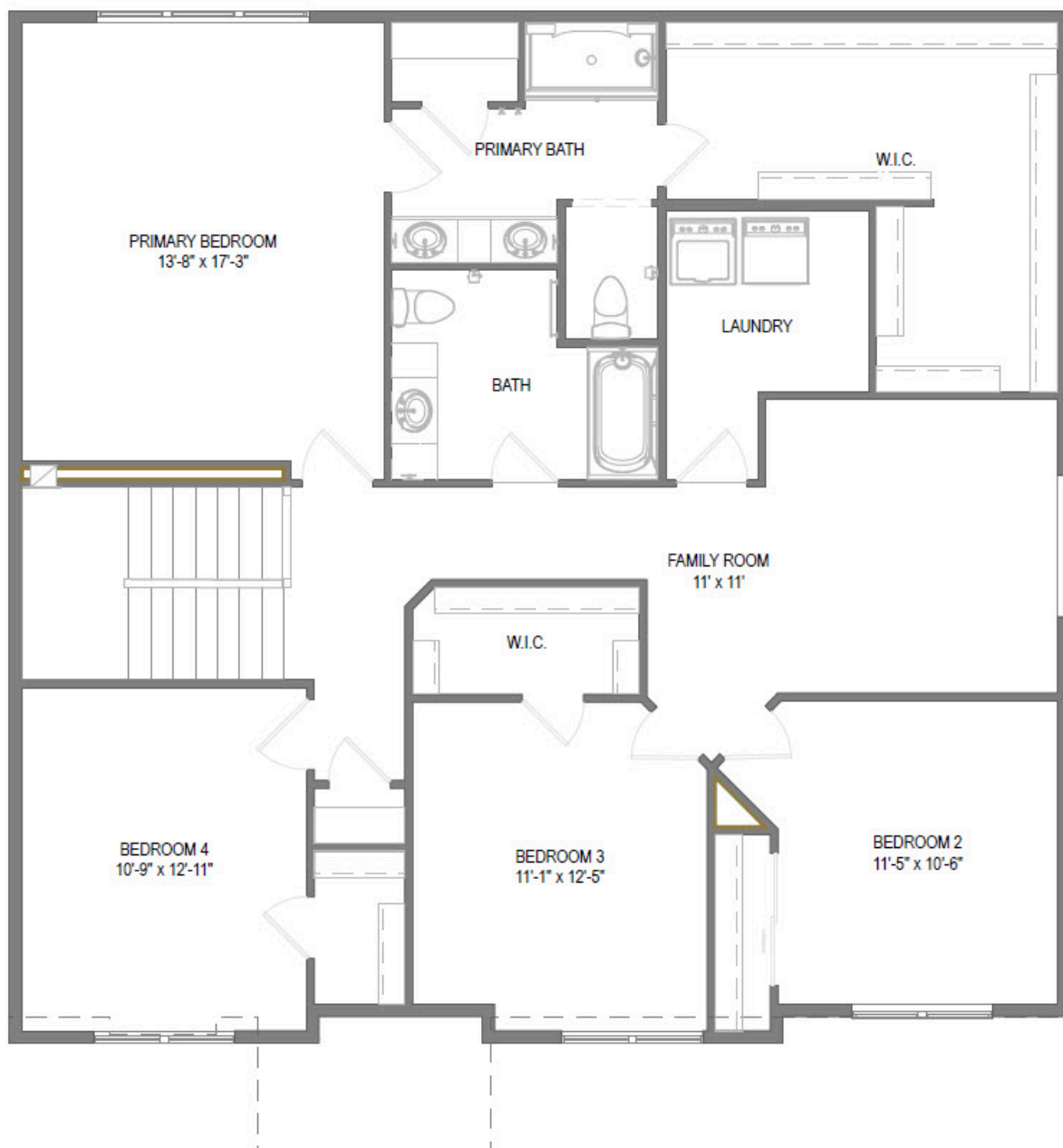
First Floor

# The Juneberry

Kirkland Crossing

TIM O'BRIEN  
homes

Call Today  
(262) 239-7342



Second Floor