

The Clare

Kirkland Crossing

TIM O'BRIEN[®]
homes

Call Today
(262) 239-7342



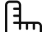
Call for Price

Home Style: Ranch

4 Elevations Available

 3 Bedroom

 2.5 Bathrooms

 2,592 Sq. Ft.

 2 - 3 Car Garage

 49 HERS Score

Welcome to 'The Clare,' a spacious ranch-style home that checks all the boxes for families and entertainers alike. Step through the front door, and you're greeted by a welcoming foyer that sets the tone for this open and airy home. Straight ahead, you'll find the heart of the home: a generous great room that effortlessly flows into a well-appointed kitchen. Perfect for family gatherings or game nights, this main living area offers plenty of room to relax and connect. Just off the kitchen, the dinette area is designed for hosting—from casual dinners to festive holiday feasts. It's not just about shared spaces, though. The rear foyer serves as a practical entry point for daily comings and goings, complete with easy access to the laundry room and a roomy walk-in closet ideal for stashing coats, shoes, and more. Need more storage? No problem. The two secondary bedrooms on this side of the home boast their own walk-in closets and share a full bathroom, so everyone has their space and convenience. But let's not forget the star of the show—the Primary Bedroom en-suite. This personal sanctuary features a uniquely designed bathroom with a split-sink layout. The shower is neatly tucked in between, creating a functional and stylish space. Walk through the bathroom, and you'll find yourself in a massive walk-in closet, offering ample space to keep your wardrobe and belongings neatly organized.



The information, text, graphics and links provided herein are provided by Tim O'Brien Homes as a convenience to its customers. Tim O'Brien Homes does not guarantee the accuracy or completeness of the information, text, graphics, links and other items contained on this website or any other website. All prices, promotions and specifications are subject to change at any time without notice based on the discretion of Tim O'Brien Homes.

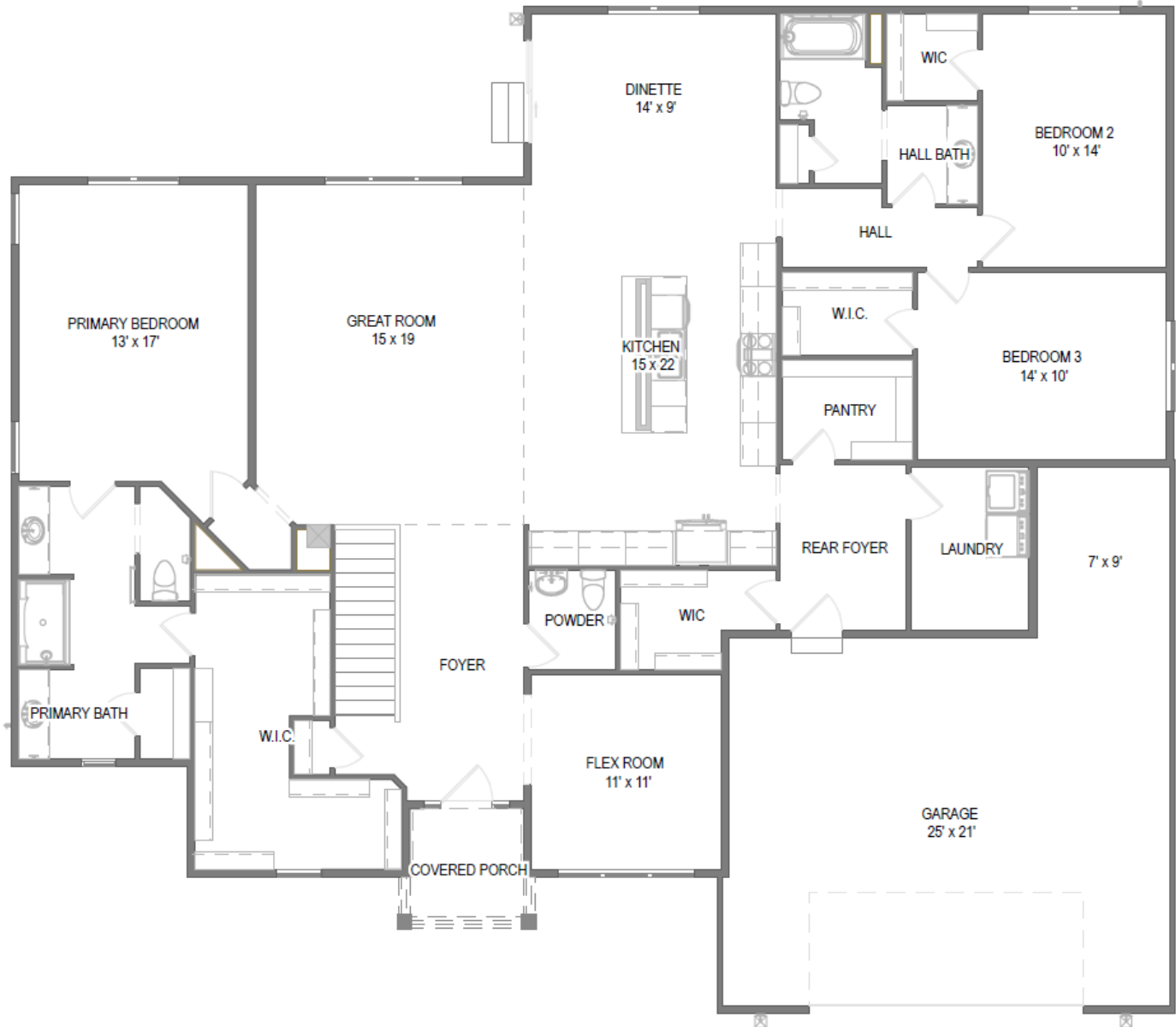


The Clare

Kirkland Crossing

TIM O'BRIEN[®]
homes

Call Today
(262) 239-7342



First Floor

The information, text, graphics and links provided herein are provided by Tim O'Brien Homes as a convenience to its customers. Tim O'Brien Homes does not guarantee the accuracy or completeness of the information, text, graphics, links and other items contained on this website or any other website. All prices, promotions and specifications are subject to change at any time without notice based on the discretion of Tim O'Brien Homes.

