

9420 W Huntington Dr

Mequon, WI 53097

TIM O'BRIEN
homes

Call Today
(262) 239-7342

UNDER CONSTRUCTION

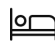





PRICED AT

\$809,900

Neighborhood: Swan Ridge Farms
9618 N Swan Rd, Mequon, WI

Home Plan: The Sycamore

-  4 Bedrooms
-  2.5 Bathrooms
-  3,207 Sq. Ft.
-  3 Car Garage

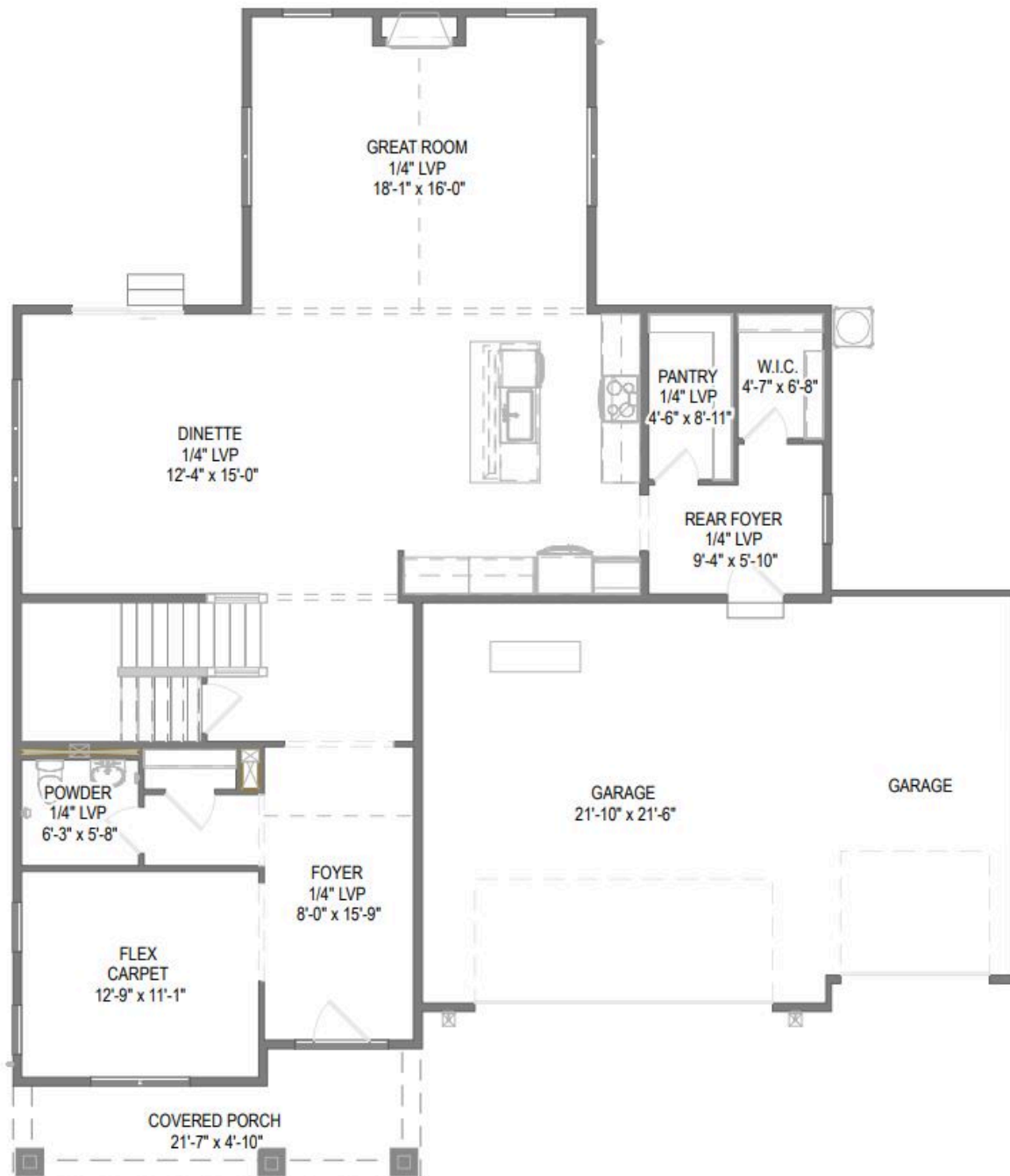
The Sycamore-located in Mequon's newest community, Swan Ridge Farms! This spacious 2-story plan features upgrades throughout. 2-story foyer leads to open concept living space. Kitchen has soft close cabinets, quartz countertops, exterior vented range hood & roomy walk-in pantry. Great Rm off kitchen & dinette boasts cathedral ceiling & gas fireplace w/ stone detail. WIC in rear foyer provides plenty of extra storage space. 2nd floor has primary suite, 3 secondary bedrooms, hall bathroom, laundry room and family room. Primary suite features angle tray ceiling, double sinks, tiled shower & WIC. Lower Level includes egress window, full bath rough-in & space for future finishing. Home is currently under construction, estimated completion September.

9420 W Huntington Dr

Mequon, WI 53097

TIM O'BRIEN
homes

Call Today
(262) 239-7342



The information, text, graphics and links provided herein are provided by Tim O'Brien Homes as a convenience to its customers. Tim O'Brien Homes does not guarantee the accuracy or completeness of the information, text, graphics, links and other items contained on this website or any other website. All prices, promotions and specifications are subject to change at any time without notice based on the discretion of Tim O'Brien Homes.



9420 W Huntington Dr

Mequon, WI 53097

TIM O'BRIEN
homes

Call Today
(262) 239-7342

