

The Sweetbriar

Fox River Falls

TIM O'BRIEN[®]
homes

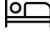
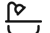



Call Today
(262) 239-7342



Call for Price

Home Style: First Floor Primary

4 Elevations Available

-  4 Bedroom
-  2.5 Bathrooms
-  2,510 Sq. Ft.
-  2 Car Garage
-  49 HERS Score

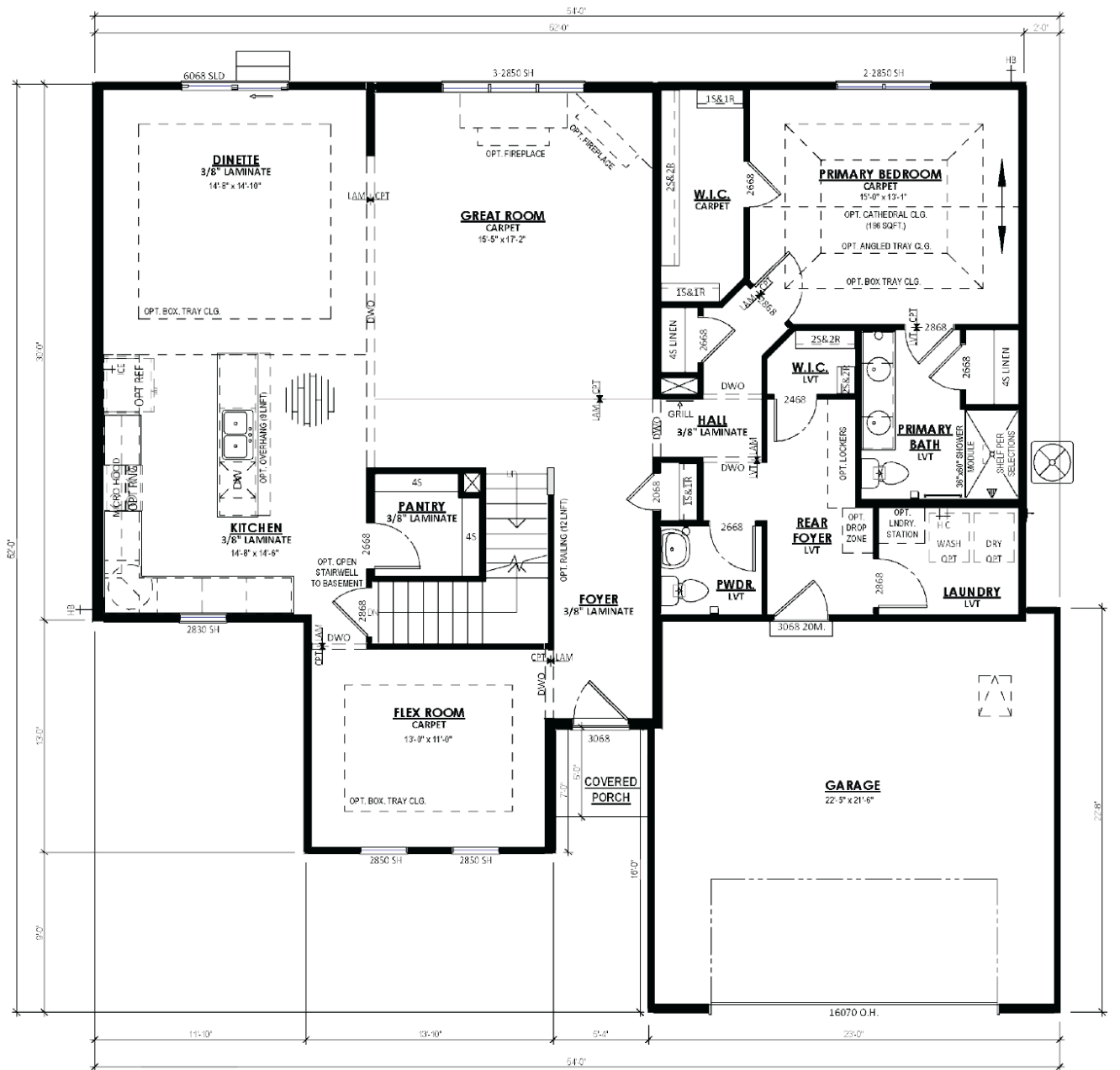
The Sweetbriar is a unique first floor Primary Suite design. The Flex Room is just off the front entryway and is accessible through the Front Foyer or Kitchen. The L-shaped staircase sits in the middle of the plan and divides the living space from the front of the home. The soaring two-story Great Room highlights the living space and is complemented by a large, well-defined Dinette and Kitchen. The kitchen is spacious and functional, perfect for cooking up your favorite meals. A hallway off of the Great Room leads to the spacious Owner's Suite with a walk-in closet and Owner's Bathroom. This hallway also provides access to the Rear Foyer, which features a walk-in closet, Powder Room, and Laundry Room. The 3 additional Secondary Bedrooms are located on the upper level along with a Full Bathroom and Loft with views down to the Great Room.

The Sweetbriar

Fox River Falls

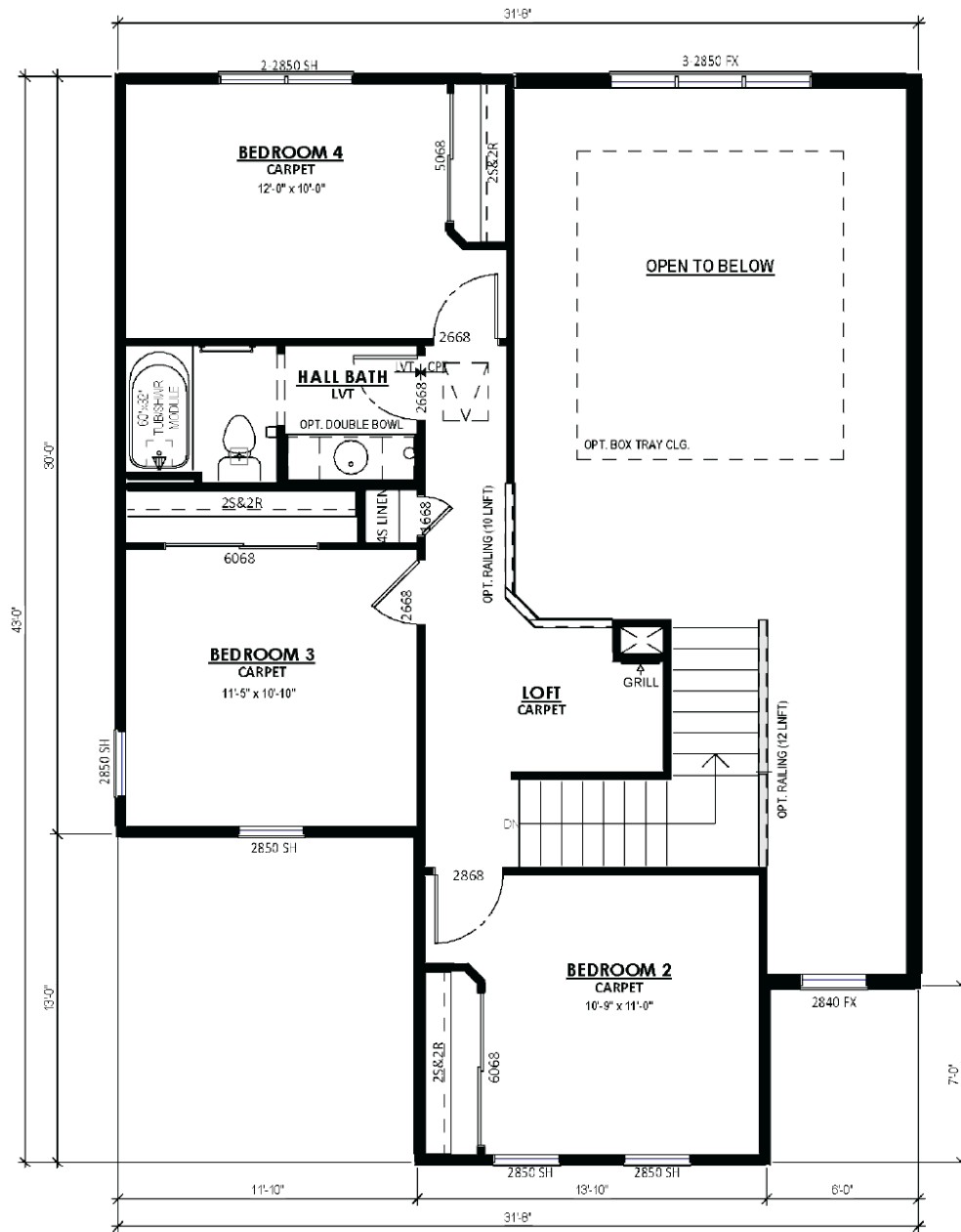
TIM O'BRIEN
homes

Call Today
(262) 239-7342



The information, text, graphics and links provided herein are provided by Tim O'Brien Homes as a convenience to its customers. Tim O'Brien Homes does not guarantee the accuracy or completeness of the information, text, graphics, links and other items contained on this website or any other website. All prices, promotions and specifications are subject to change at any time without notice based on the discretion of Tim O'Brien Homes.





SECOND FLOOR PLAN