

# The Sweetbriar

Maple Fields Estates

TIM O'BRIEN  
homes

Call Today  
(262) 239-7342



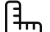
## Call for Price

**Home Style:** First Floor Primary

4 Elevations Available

 4 Bedroom

 2.5 Bathrooms

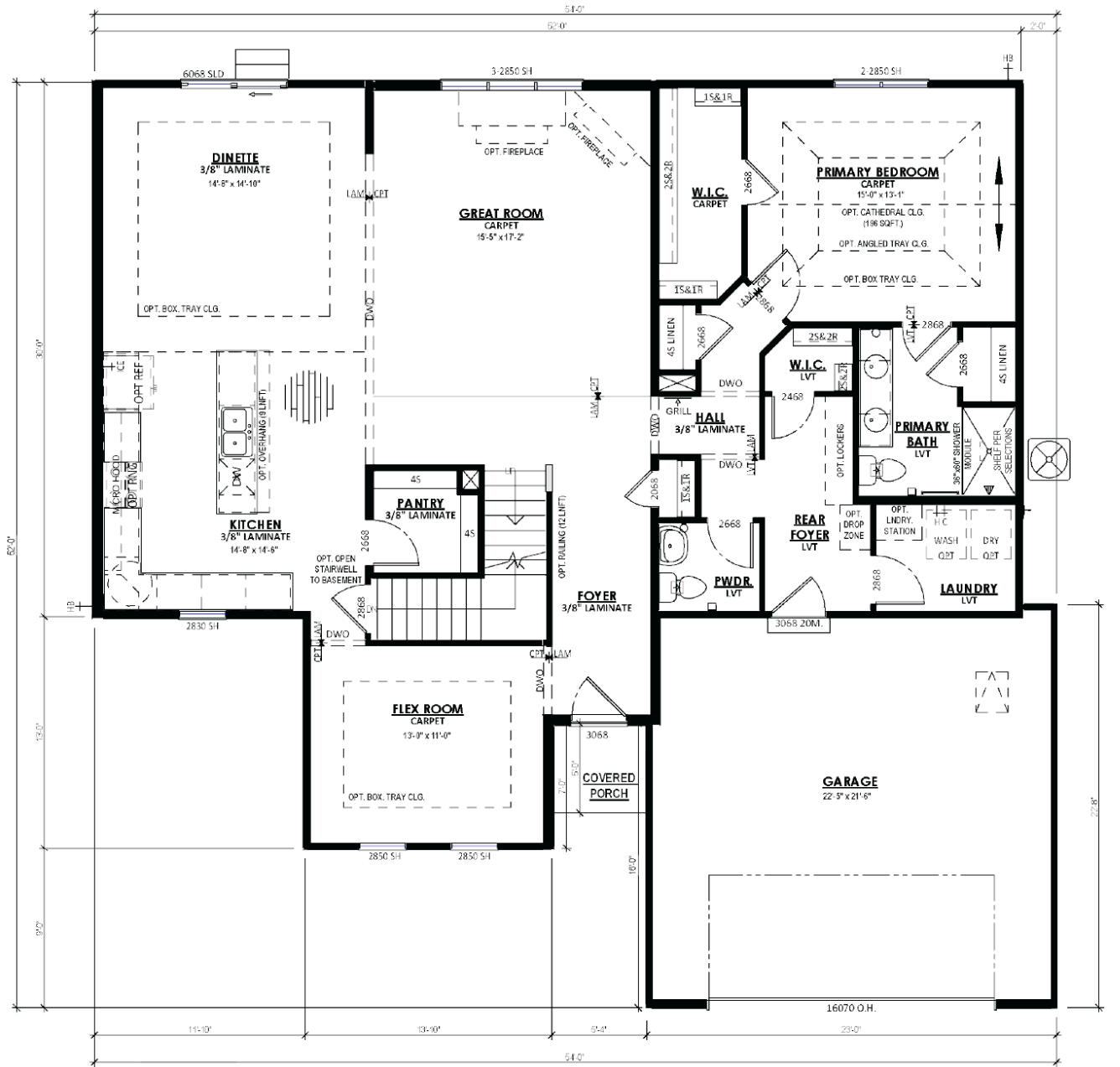
 2,510 Sq. Ft.

 2 Car Garage

 49 HERS Score

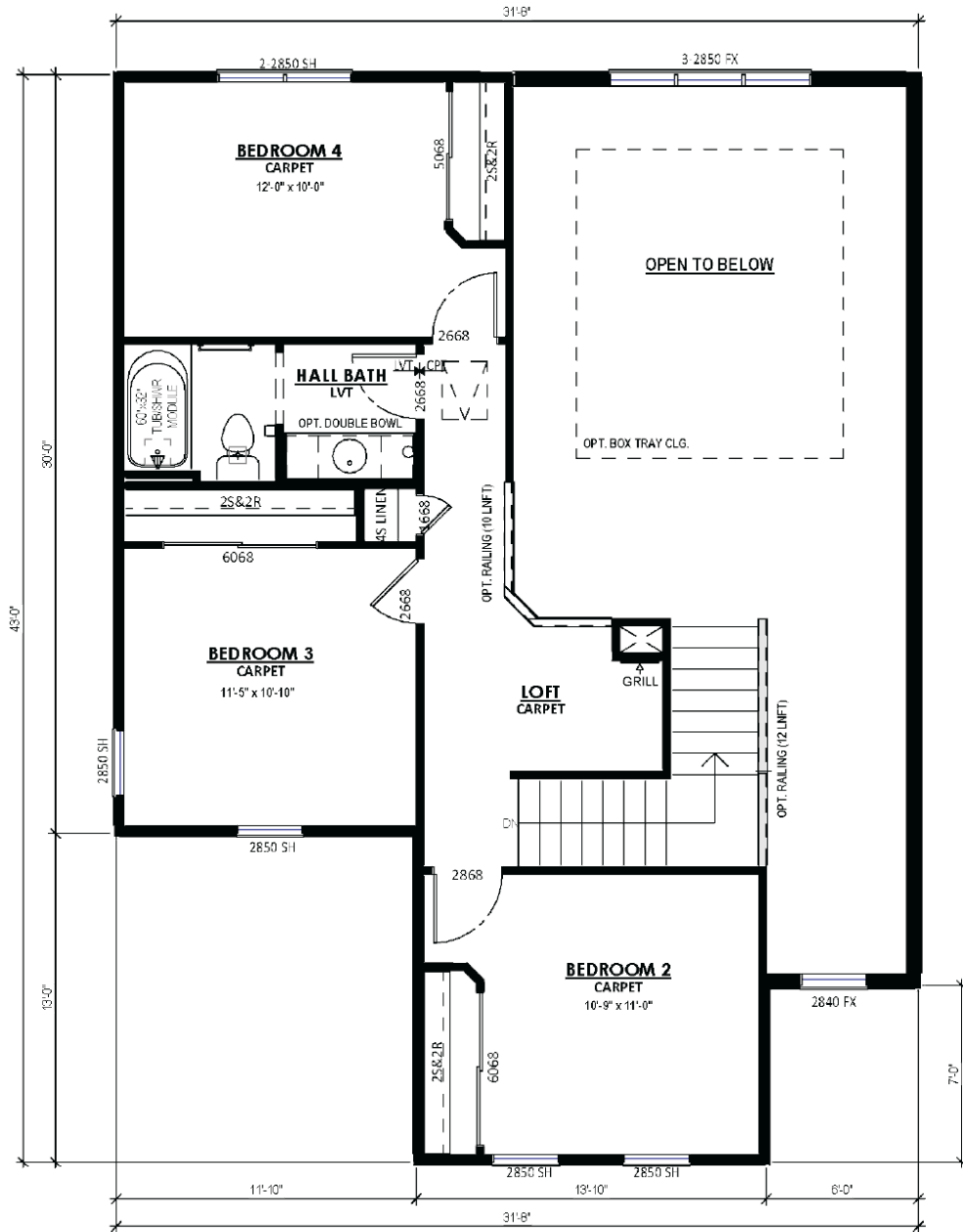
The Sweetbriar is a unique first floor Primary Suite design. The Flex Room is just off the front entryway and is accessible through the Front Foyer or Kitchen. The L-shaped staircase sits in the middle of the plan and divides the living space from the front of the home. The soaring two-story Great Room highlights the living space and is complemented by a large, well-defined Dinette and Kitchen. The kitchen is spacious and functional, perfect for cooking up your favorite meals. A hallway off of the Great Room leads to the spacious Owner's Suite with a walk-in closet and Owner's Bathroom. This hallway also provides access to the Rear Foyer, which features a walk-in closet, Powder Room, and Laundry Room. The 3 additional Secondary Bedrooms are located on the upper level along with a Full Bathroom and Loft with views down to the Great Room.

**Call Today**  
(262) 239-7342



**FIRST FLOOR PLAN**

**Call Today**  
(262) 239-7342



**SECOND FLOOR PLAN**

