

# The Alpine

Maple Fields Estates

TIM O'BRIEN  
homes

Call Today  
(262) 239-7342



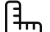
## Call for Price

**Home Style:** First Floor Primary

3 Elevations Available

 4 Bedroom

 2.5 Bathrooms

 2,281 Sq. Ft.

 2 Car Garage

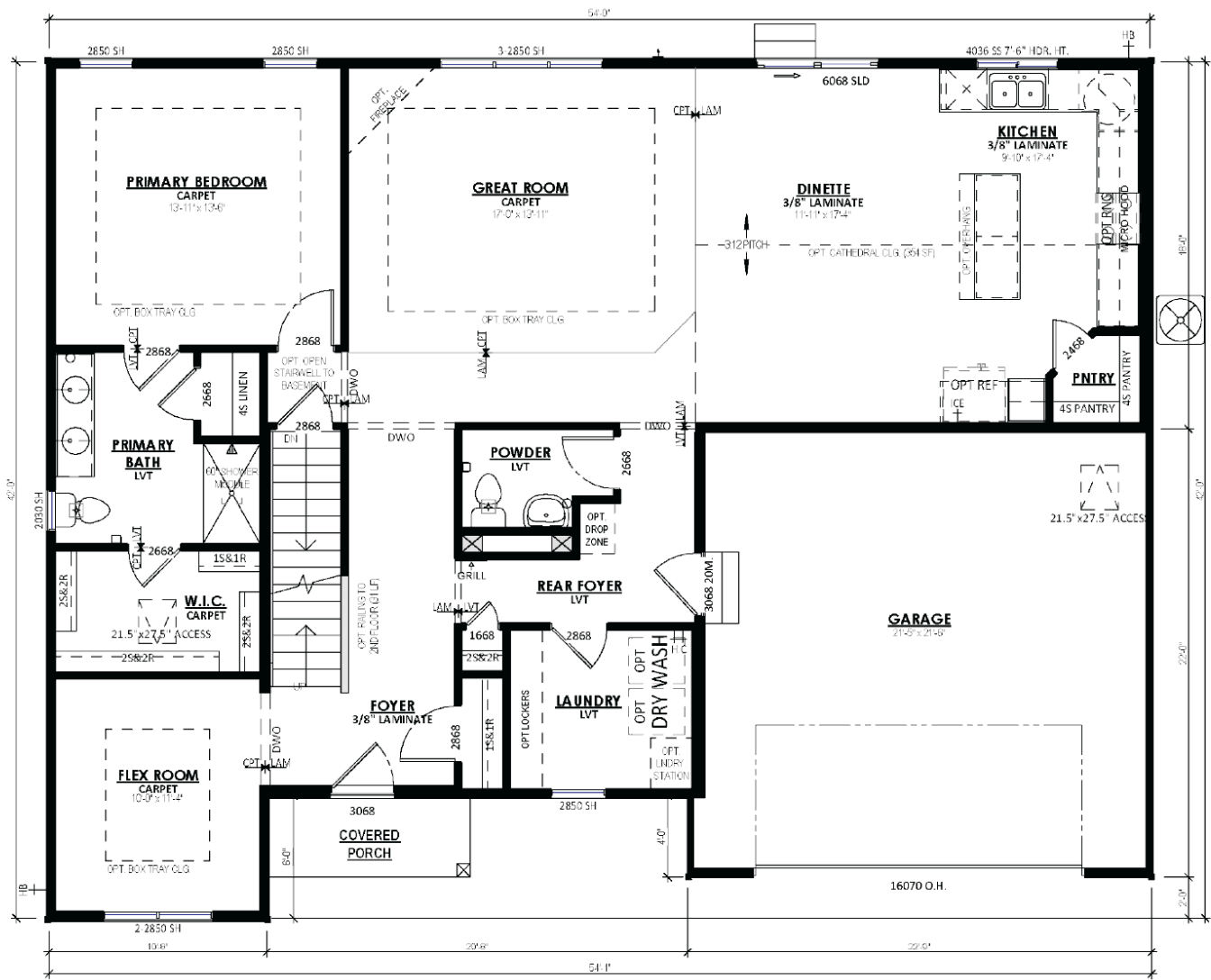
 49 HERS Score

The Alpine is a classic first-floor Owner's Suite home plan with the staircase located at the Front Foyer as you enter and a flex room to one side. A hallway just past the stairs provides access to the Rear Foyer, which includes a Laundry Room and Powder room, as well as another access point to the main living space. The space opens to a large Great Room, Dinette, and Kitchen with a corner walk-in Pantry. The Owner's Suite is situated on one side of the first floor and has a large walk-in closet through the Owner's Bathroom. Notable second floor details include angled entries to two secondary bedrooms at the top of the stairs, a full bathroom, and third secondary bedroom.

# The Alpine

Maple Fields Estates

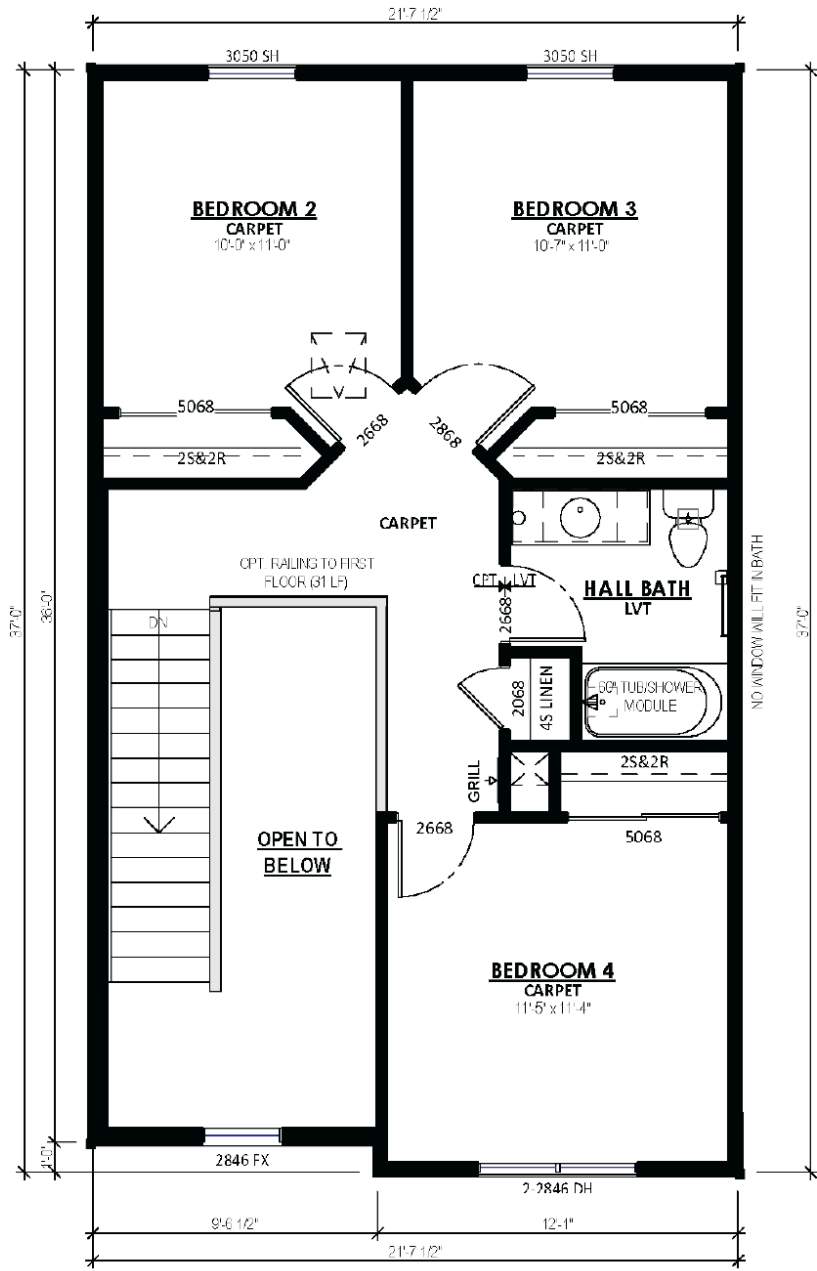
Call Today  
(262) 239-7342



**FIRST FLOOR PLAN**



**Call Today**  
(262) 239-7342



**STANDARD SECOND FLOOR PLAN**