

The Sweetbriar

Stonewall Farms

TIM O'BRIEN
homes

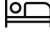
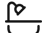



Call Today
(262) 239-7342



Call for Price

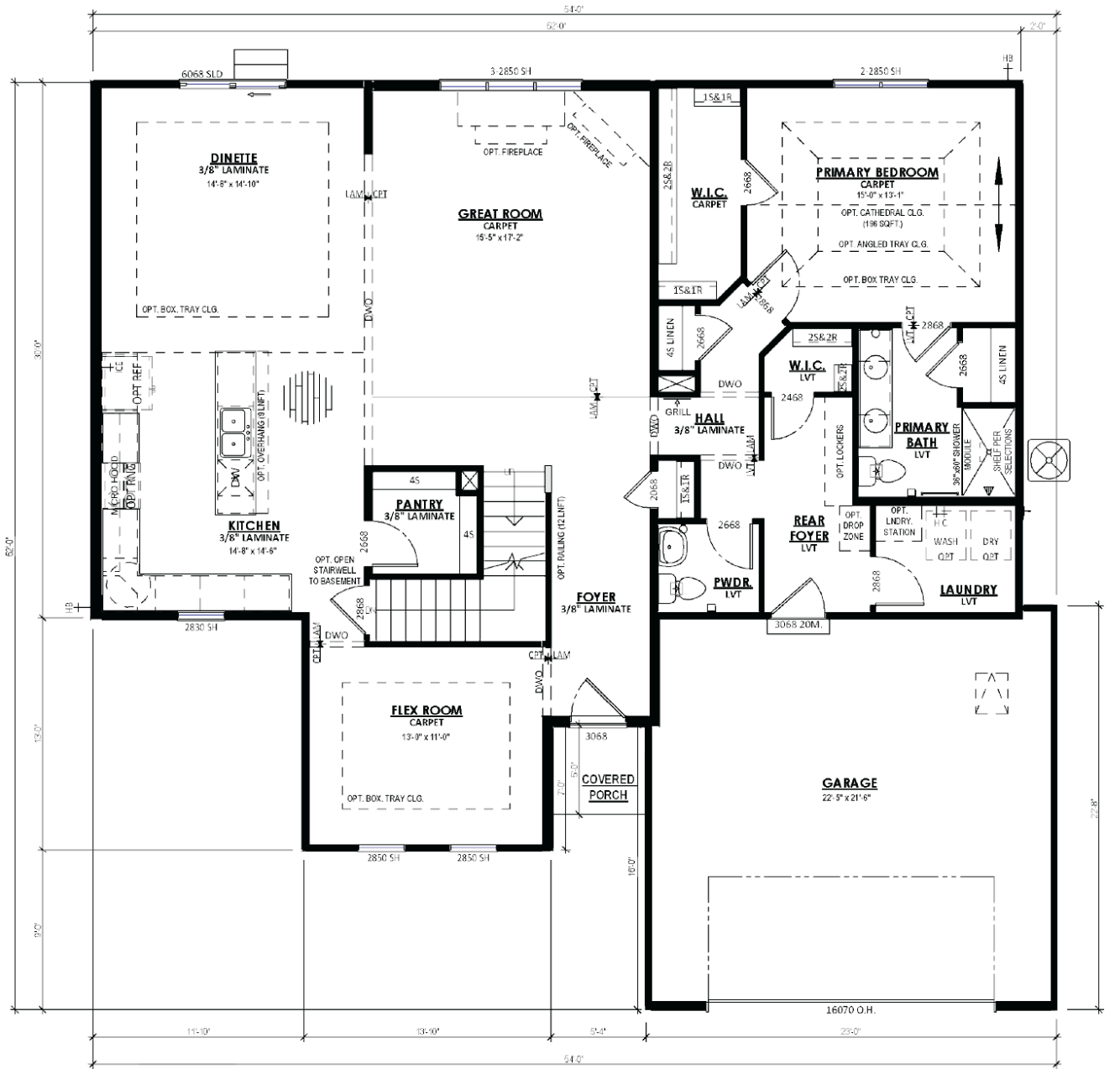
Home Style: First Floor Primary

4 Elevations Available

-  4 Bedroom
-  2.5 Bathrooms
-  2,510 Sq. Ft.
-  2 Car Garage
-  49 HERS Score

The Sweetbriar is a unique first floor Primary Suite design. The Flex Room is just off the front entryway and is accessible through the Front Foyer or Kitchen. The L-shaped staircase sits in the middle of the plan and divides the living space from the front of the home. The soaring two-story Great Room highlights the living space and is complemented by a large, well-defined Dinette and Kitchen. The kitchen is spacious and functional, perfect for cooking up your favorite meals. A hallway off of the Great Room leads to the spacious Owner's Suite with a walk-in closet and Owner's Bathroom. This hallway also provides access to the Rear Foyer, which features a walk-in closet, Powder Room, and Laundry Room. The 3 additional Secondary Bedrooms are located on the upper level along with a Full Bathroom and Loft with views down to the Great Room.

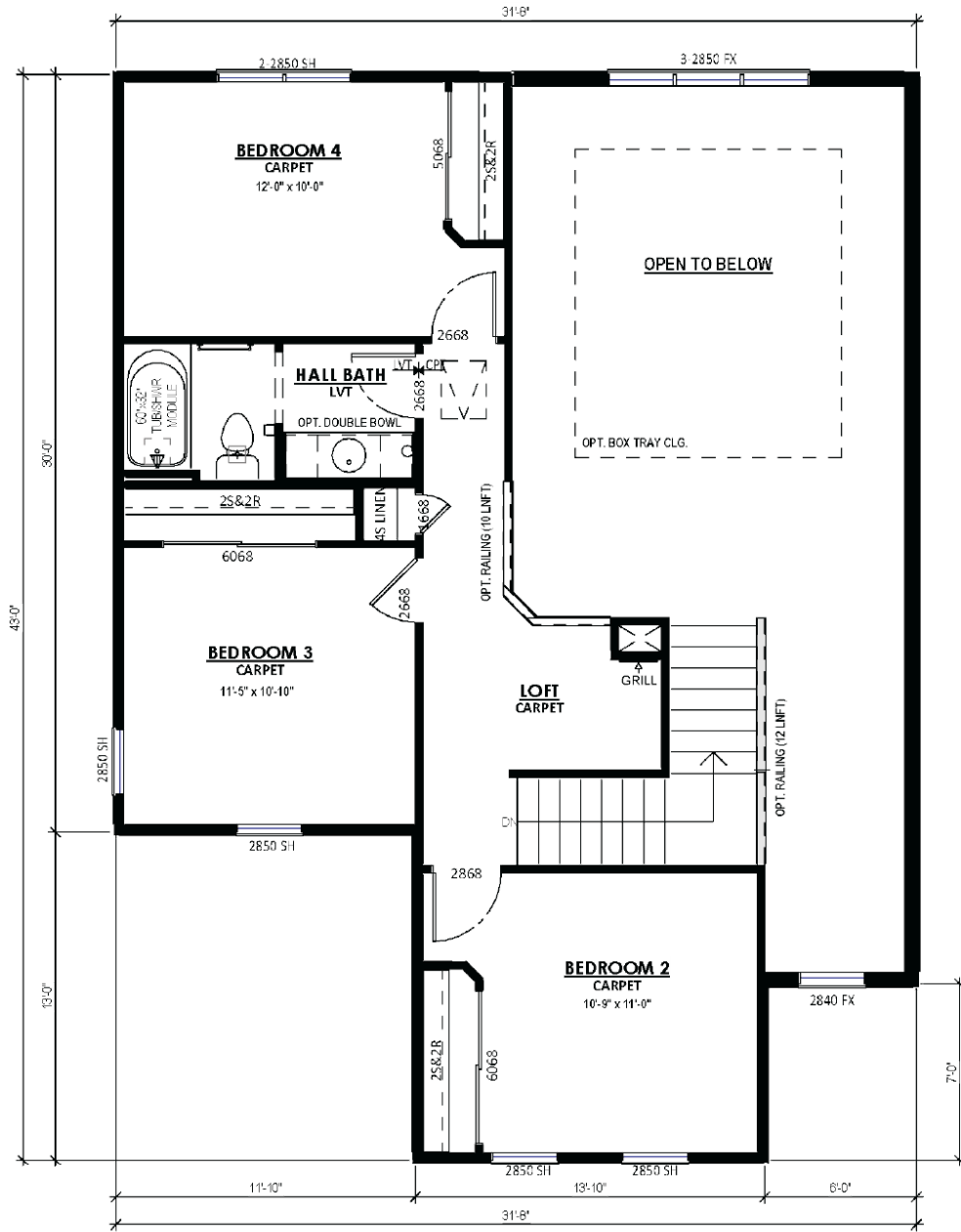
Call Today
(262) 239-7342



FIRST FLOOR PLAN



Call Today
(262) 239-7342



SECOND FLOOR PLAN