

696 N Sparrow Way

Grafton, WI 53024

TIM O'BRIEN
homes

Call Today
(262) 239-7342

UNDER CONSTRUCTION



PRICED AT

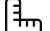
\$624,900


Neighborhood: Stonewall Farms
Grafton, WI

Home Plan: The Mulberry

 4 Bedrooms

 2.5 Bathrooms

 2,312 Sq. Ft.

 3 Car Garage

Walk into the Mulberry and you'll find yourself in a welcoming foyer. Off to one side, there's a handy flex room — perfect for whatever you need it to be. Right across, is the powder room. Moving along, the space opens up to the heart of the home. You've got your kitchen and a cozy spot for meals in the dinette, all flowing seamlessly into the spacious Great Room. It's all open-concept, so you won't miss a beat when you're entertaining or just hanging out. Plus, the staircase is right by the Great Room, making it super convenient. Head upstairs and you're in for a treat. There's room for everyone with 4 bedrooms, including a big primary bedroom where you can kick back and relax. And let's not forget the laundry room — it's right where you need it, making those laundry days a breeze.

696 N Sparrow Way

Grafton, WI 53024

TIM O'BRIEN[®]
homes

Call Today
(262) 239-7342



The information, text, graphics and links provided herein are provided by Tim O'Brien Homes as a convenience to its customers. Tim O'Brien Homes does not guarantee the accuracy or completeness of the information, text, graphics, links and other items contained on this website or any other website. All prices, promotions and specifications are subject to change at any time without notice based on the discretion of Tim O'Brien Homes.

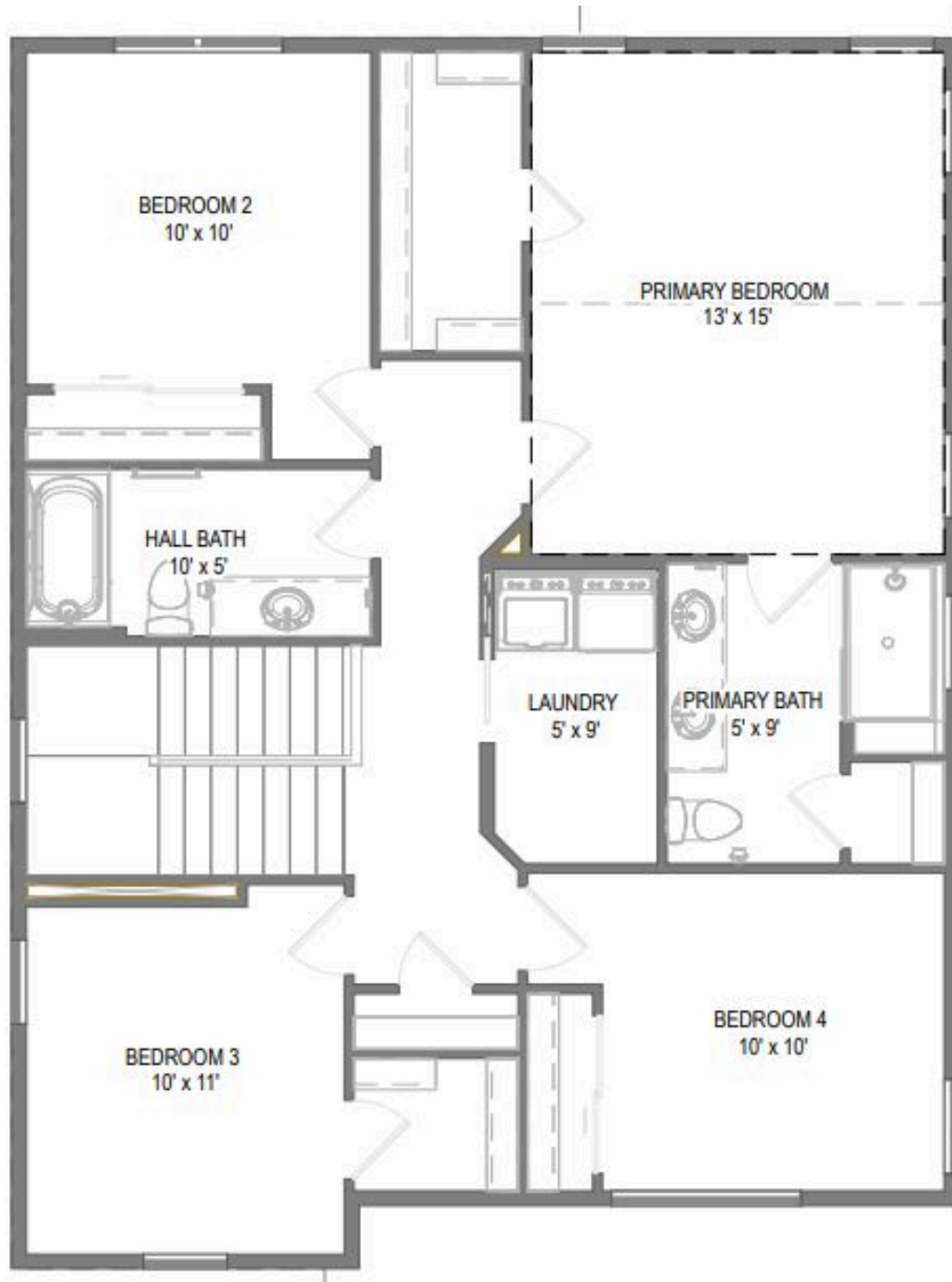


696 N Sparrow Way

Grafton, WI 53024

TIM O'BRIEN
homes

Call Today
(262) 239-7342



The information, text, graphics and links provided herein are provided by Tim O'Brien Homes as a convenience to its customers. Tim O'Brien Homes does not guarantee the accuracy or completeness of the information, text, graphics, links and other items contained on this website or any other website. All prices, promotions and specifications are subject to change at any time without notice based on the discretion of Tim O'Brien Homes.

