

# W151N11999 Mistletoe Road

Germantown, WI 53022

TIM O'BRIEN  
homes

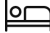
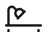
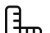

Call Today  
(262) 239-7342



## Call for Price

**Neighborhood:** Wrenwood North  
Germantown, WI

**Home Plan:** The Monterey

-  4 Bedrooms
-  2.5 Bathrooms
-  2,514 Sq. Ft.
-  2.5 Car Garage

The Monterey stands out with its unique layout, crafting a distinctive front exterior. The grand, two-story Foyer ushers you into a flexible space with a wide entryway and an adjacent discreet Powder Room. Embracing an open-concept design, the primary living space includes a large Kitchen, a comfortable Dinette, and a Great Room that extends out to the side of the home for an added sense of spaciousness. The staircase, conveniently located at the back of the home near the Rear Foyer, provides access to the upper level. This area incorporates a walk-in pantry, a walk-in closet, and a Laundry Room neatly tucked away behind a pocket door. The second floor presents three secondary bedrooms, a full bathroom, and a sumptuous Primary Suite, featuring an en suite bathroom and a uniquely spacious, angular walk-in closet. The Monterey's thoughtful design and flow contribute to its status as our best-selling plan.



The information, text, graphics and links provided herein are provided by Tim O'Brien Homes as a convenience to its customers. Tim O'Brien Homes does not guarantee the accuracy or completeness of the information, text, graphics, links and other items contained on this website or any other website. All prices, promotions and specifications are subject to change at any time without notice based on the discretion of Tim O'Brien Homes.

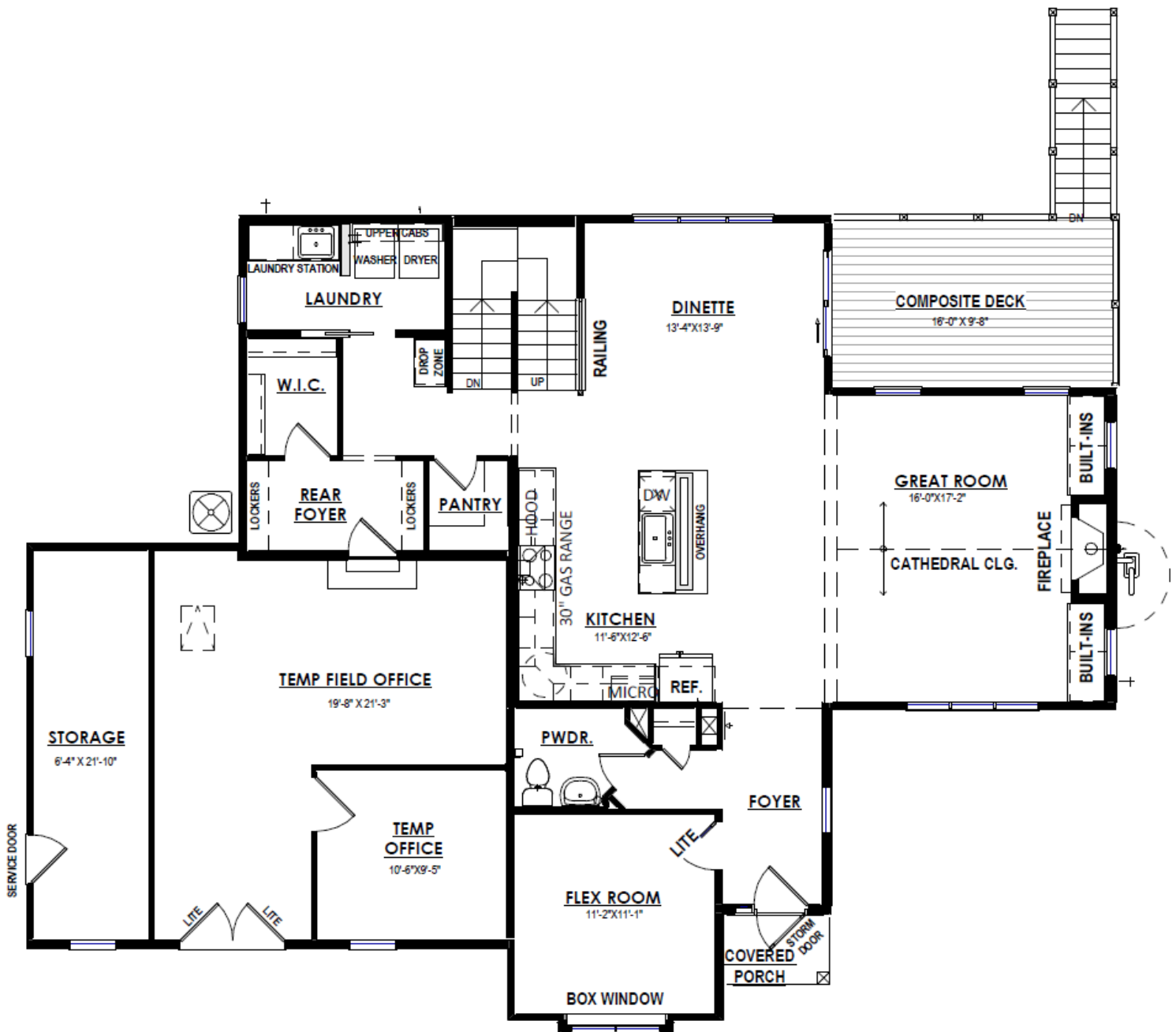


# W151N1999 Mistletoe Road

Germantown, WI 53022

TIM O'BRIEN  
homes

Call Today  
(262) 239-7342



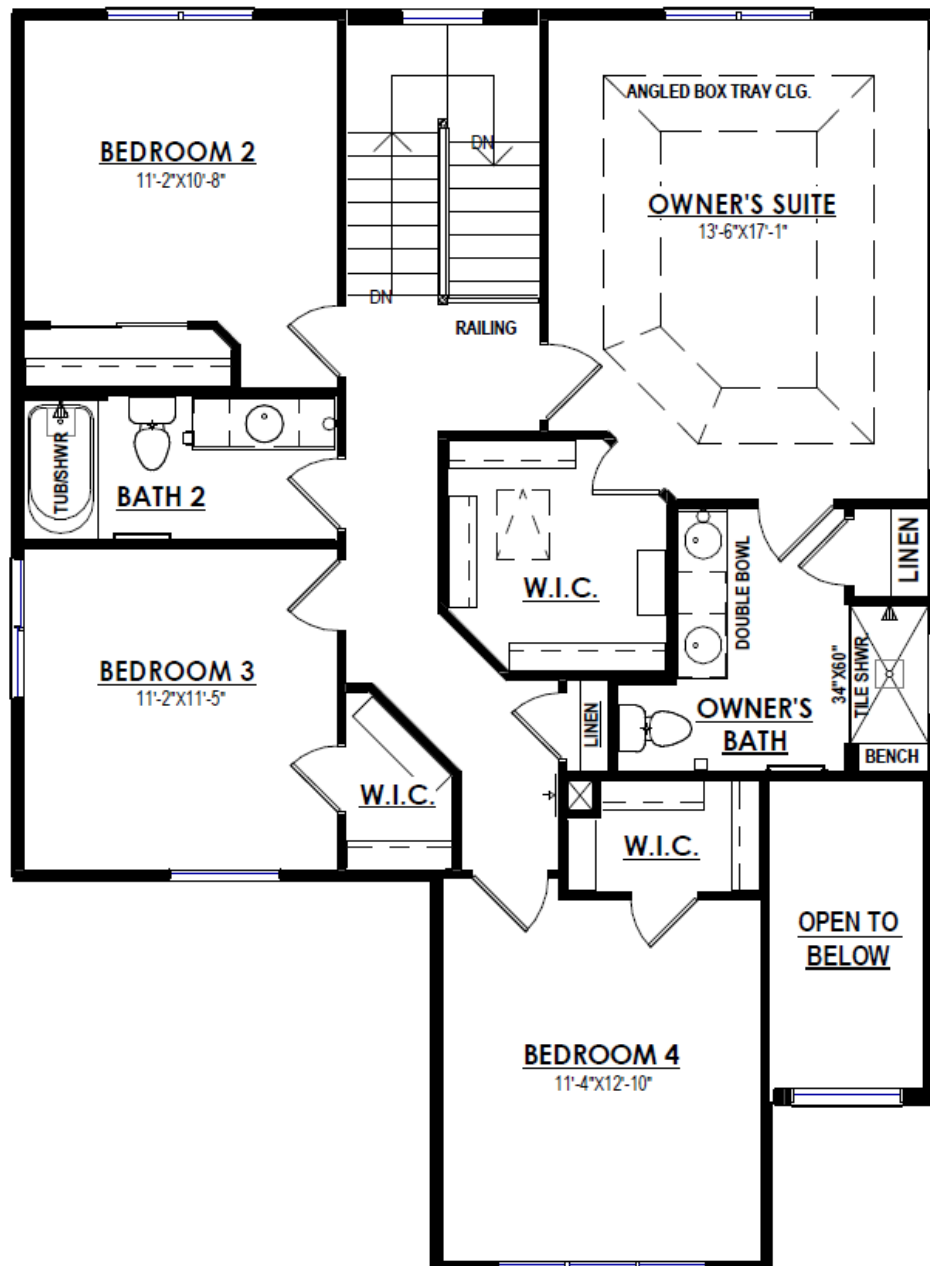
## FIRST FLOOR PLAN

# W151N11999 Mistletoe Road

Germantown, WI 53022

TIM O'BRIEN  
homes

Call Today  
(262) 239-7342



## SECOND FLOOR PLAN