

The Azalea

Wrenwood North

TIM O'BRIEN
homes

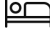
Call Today
(262) 239-7342



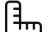
Call for Price

Home Style: First Floor Primary

3 Elevations Available

 4 - 5 Bedroom

 2.5 - 4 Bathrooms

 3,003 Sq. Ft.

 2 Car Garage

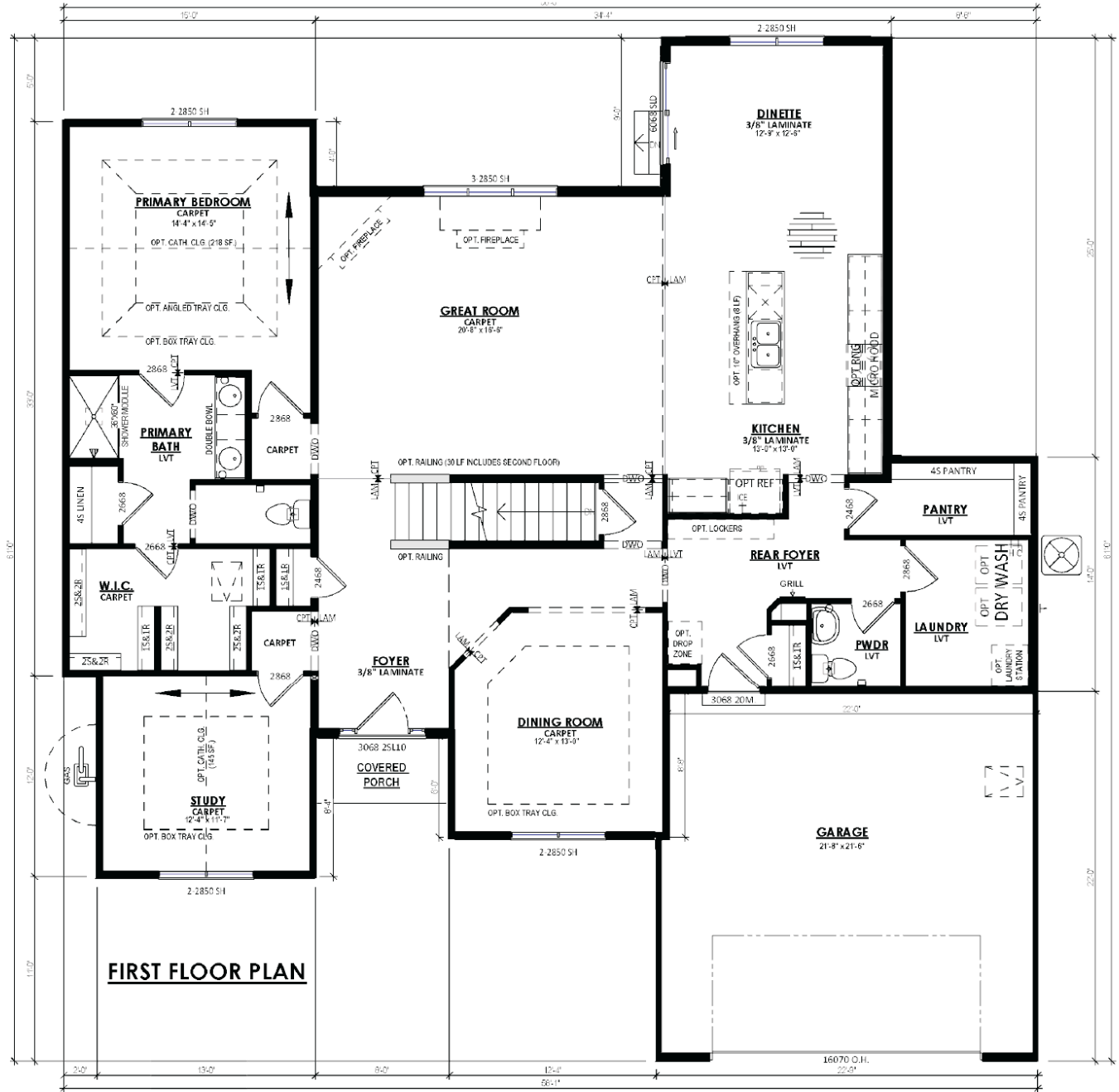
 49 HERS Score

The Azalea offers a standout design with a first-floor Primary Suite and boasts an awe-inspiring two-story Foyer and Great Room. One wing of the house holds a Flex Room and the Primary Suite, featuring a spacious walk-in closet accessed via the elegantly appointed Bathroom. The other side showcases a well-equipped Kitchen, a luminous Breakfast Nook, and a practical Rear Foyer complete with pantry, Powder Room, and Laundry Room. At the heart of the first floor lies a separate dining space, a Great Room with soaring ceilings, and a staircase leading to the upper level. The second floor offers three additional bedrooms, each with walk-in closets. It further enhances the living experience with a loft and a walkway, overlooking the impressive Great Room below.

The Azalea

Wrenwood North

Call Today
(262) 239-7342



The information, text, graphics and links provided herein are provided by Tim O'Brien Homes as a convenience to its customers. Tim O'Brien Homes does not guarantee the accuracy or completeness of the information, text, graphics, links and other items contained on this website or any other website. All prices, promotions and specifications are subject to change at any time without notice based on the discretion of Tim O'Brien Homes.



