

4811 Lacy Rd

Fitchburg, WI 53711

TIM O'BRIEN
homes

Call Today
(608) 401-4769

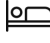



MOVE-IN READY



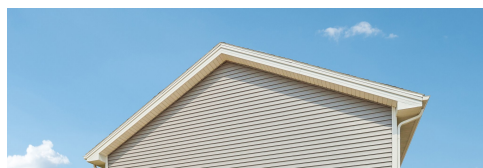
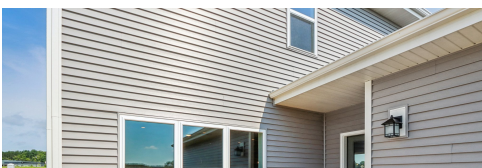
PRICED AT

\$578,900

Neighborhood: Terravessa
Fitchburg, WI

-  3 Bedrooms
-  2.5 Bathrooms
-  2,370 Sq. Ft.
-  2 Car Garage

Move-In Ready NEW CONSTRUCTION! The Mulberry offers 2-story open-concept living with a rear 2-car garage w/ extra space, allowing for an oversized front porch and tons of curb appeal! Upon entry find a large flex room, perfect for whatever you need it to be. The foyer leads to an open-concept living space in the heart of the home. The spacious Great Room with Fireplace steps out onto your deck, overlooking your landscaped low-maintenance yard. The Dining area and spacious Kitchen are ideal for hosting, leading to a HUGE pantry. Head upstairs and you're in for a treat. There's room for everyone with 4 bedrooms, including a large Primary Bedroom retreat with Cathedral Ceiling. The walk-in closet is not short on space, and the luxury en-suite bath boasts a where you can kick back and relax. And let's not forget the laundry room — it's right where you need it, making those laundry days a breeze. Endless potential for a custom designed finished basement if desired.



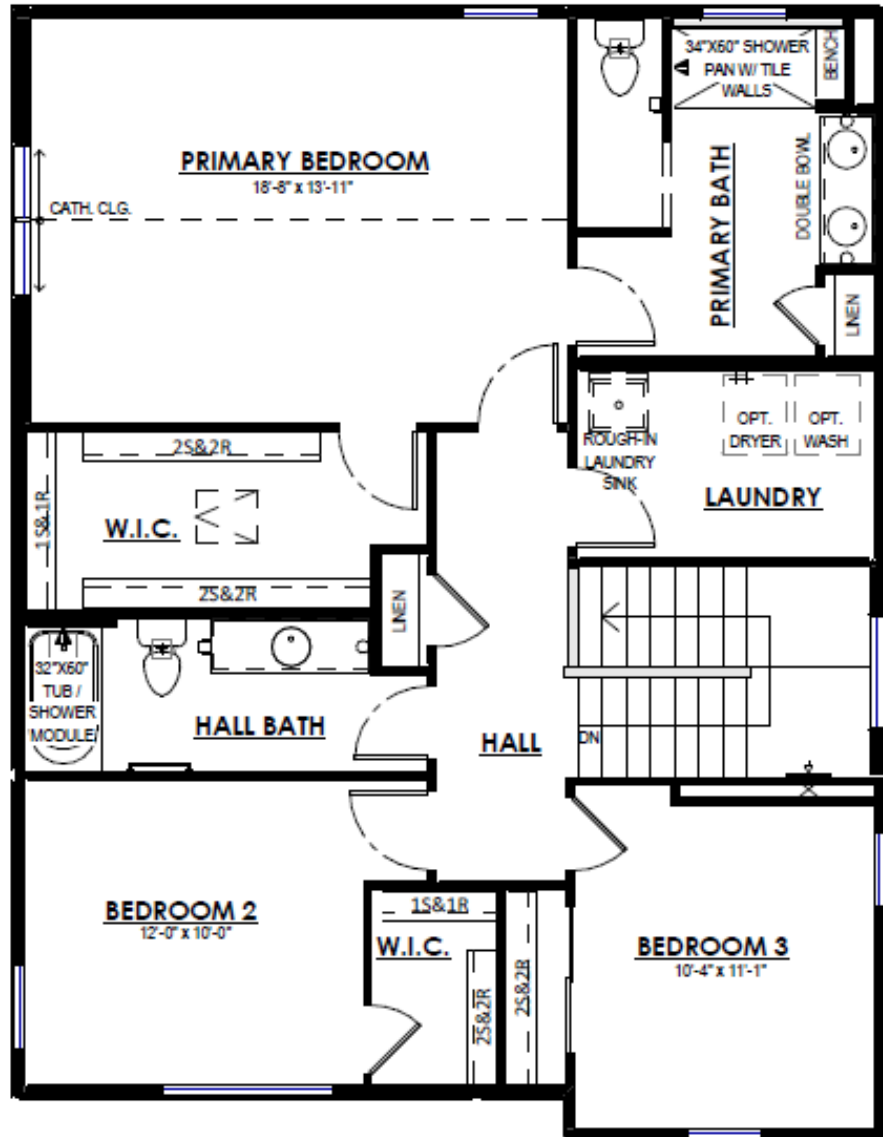
The information, text, graphics and links provided herein are provided by Tim O'Brien Homes as a convenience to its customers. Tim O'Brien Homes does not guarantee the accuracy or completeness of the information, text, graphics, links and other items contained on this website or any other website. All prices, promotions and specifications are subject to change at any time without notice based on the discretion of Tim O'Brien Homes.



4811 Lacy Rd

Fitchburg, WI 53711

Call Today
(608) 401-4769



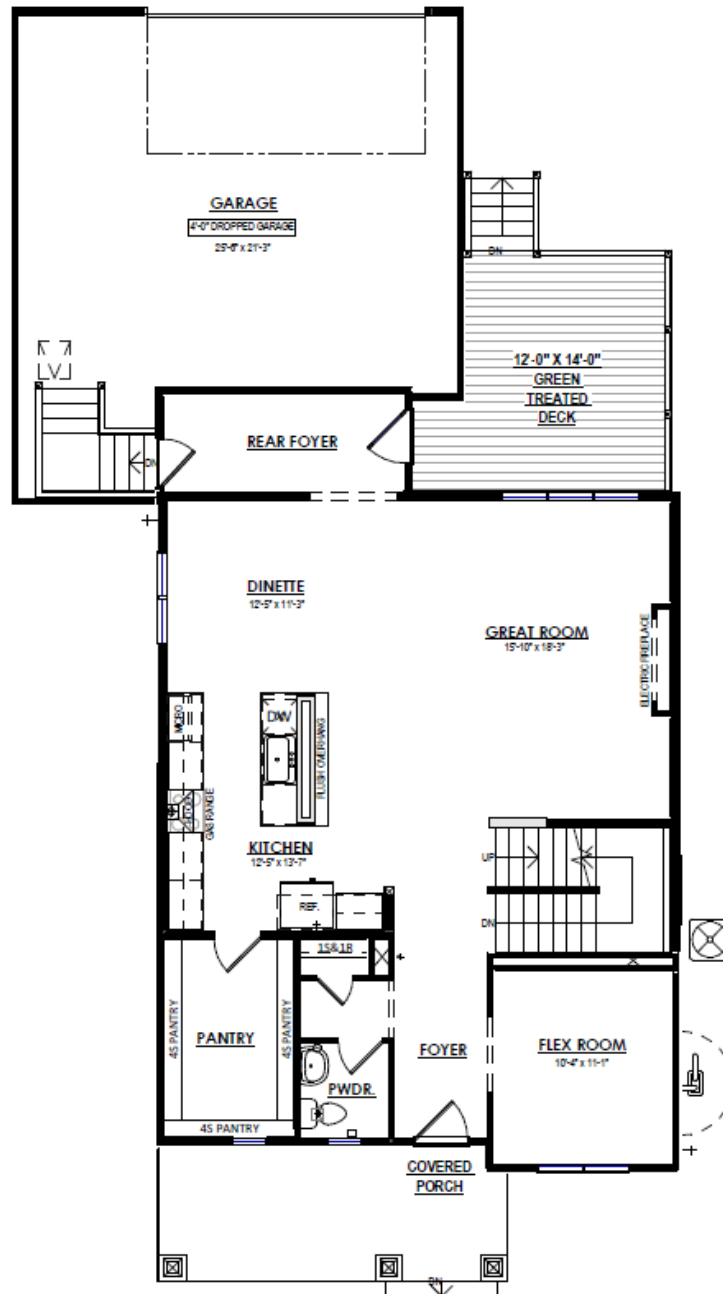
SECOND FLOOR PLAN

The information, text, graphics and links provided herein are provided by Tim O'Brien Homes as a convenience to its customers. Tim O'Brien Homes does not guarantee the accuracy or completeness of the information, text, graphics, links and other items contained on this website or any other website. All prices, promotions and specifications are subject to change at any time without notice based on the discretion of Tim O'Brien Homes.

4811 Lacy Rd

Fitchburg, WI 53711

Call Today
(608) 401-4769



FIRST FLOOR PLAN

The information, text, graphics and links provided herein are provided by Tim O'Brien Homes as a convenience to its customers. Tim O'Brien Homes does not guarantee the accuracy or completeness of the information, text, graphics, links and other items contained on this website or any other website. All prices, promotions and specifications are subject to change at any time without notice based on the discretion of Tim O'Brien Homes.