

4813 Lacy Road

Fitchburg, WI 53711

TIM O'BRIEN[®]
homes

Call Today
(608) 401-4769

UNDER CONSTRUCTION







PRICED AT

\$623,875

Neighborhood: Terravessa
Fitchburg, WI

Home Plan: The Mulberry

 3 Bedrooms
 2.5 Bathrooms
 2,444 Sq. Ft.
 2 Car Garage

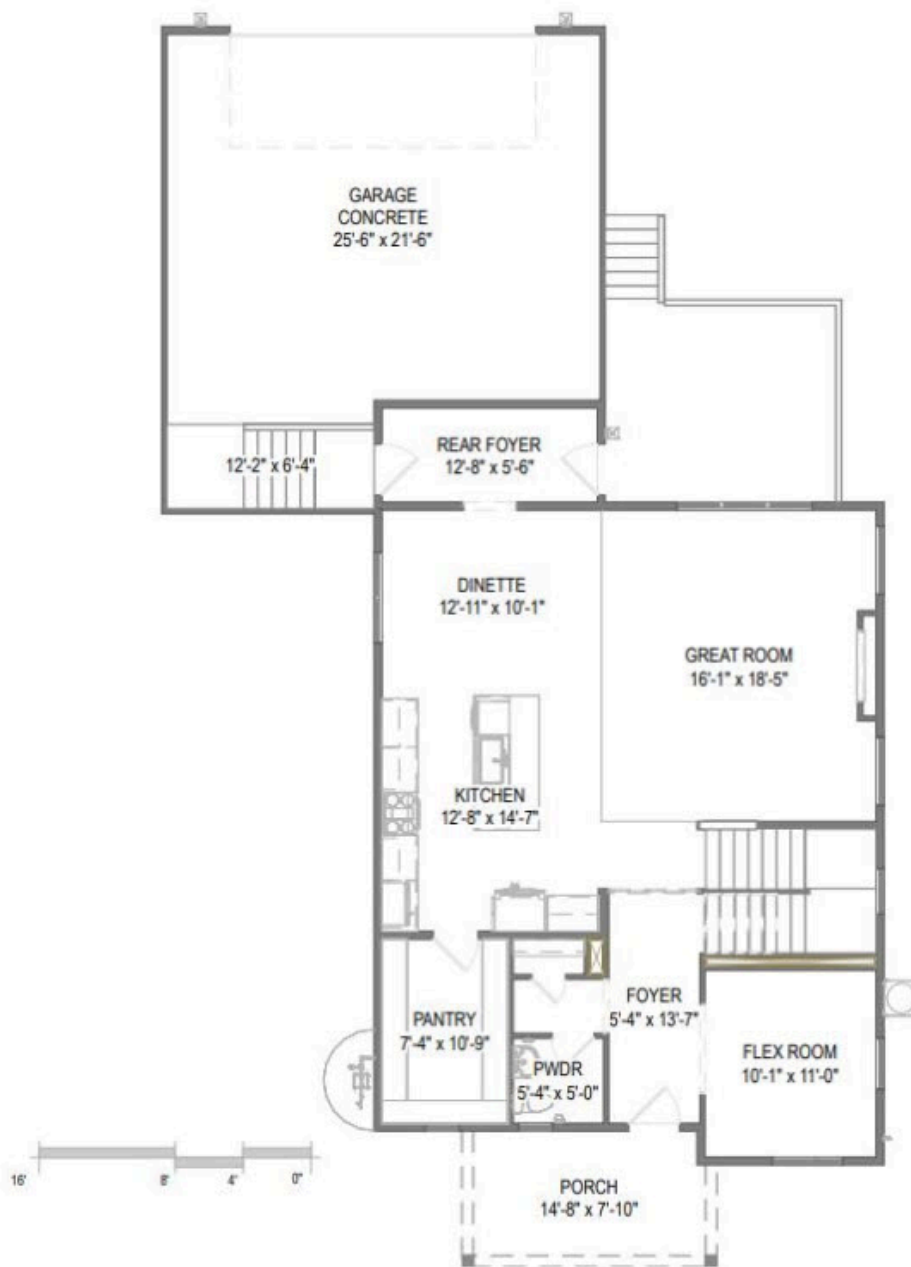
Move-In Ready NEW CONSTRUCTION! The Mulberry offers 2-story open-concept living w/ a rear 2+car garage w/ extra space, an oversized front porch & tons of curb appeal in the front of the home! The main level boasts a spacious Great Room w/ Fireplace which steps out onto your porch overlooking your landscaped low-maintenance yard. The Dining area & spacious Kitchen are ideal for hosting, leading to a HUGE pantry. Main floor flex room is a great size. Upstairs offers 3 bedrooms, including a large Primary retreat w/ Cathedral Ceiling, Large walk in closet & luxury en-suite bath w/ tile shower. Convenient 2nd floor laundry room. Endless potential for a custom designed finished basement if desired.

4813 Lacy Road

Fitchburg, WI 53711

TIM O'BRIEN
homes

Call Today
(608) 401-4769



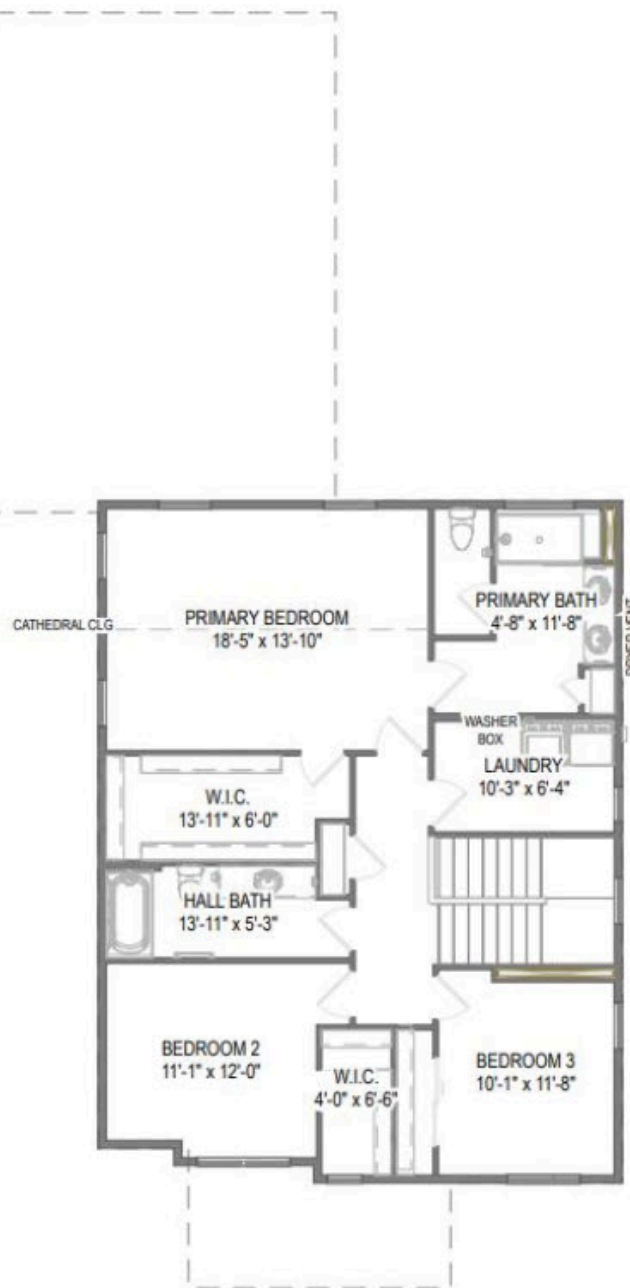
First Floor

4813 Lacy Road

Fitchburg, WI 53711

TIM O'BRIEN[®]
homes

Call Today
(608) 401-4769



Second Floor