

4798 Lacy Road

Fitchburg, WI 53711

TIM O'BRIEN
homes

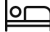



Call Today
(608) 401-4769



Call for Price

Neighborhood: Terravessa
Fitchburg, WI

Home Plan: The Mulberry

-  3 Bedrooms
-  2.5 Bathrooms
-  2,366 Sq. Ft.
-  2 Car Garage

Welcome to the Mulberry, our newest model home in the vibrant Terravessa community coming soon! Thoughtfully designed for modern living, this two-story home combines functional spaces with warm, welcoming style.

On the first floor, you'll find an open-concept layout anchored by a spacious Great Room and a bright Kitchen with a large island, walk-in pantry, and a convenient Butler's Pantry—perfect for everyday living and entertaining. A flexible front room near the foyer is ideal for a home office, playroom, or guest space.

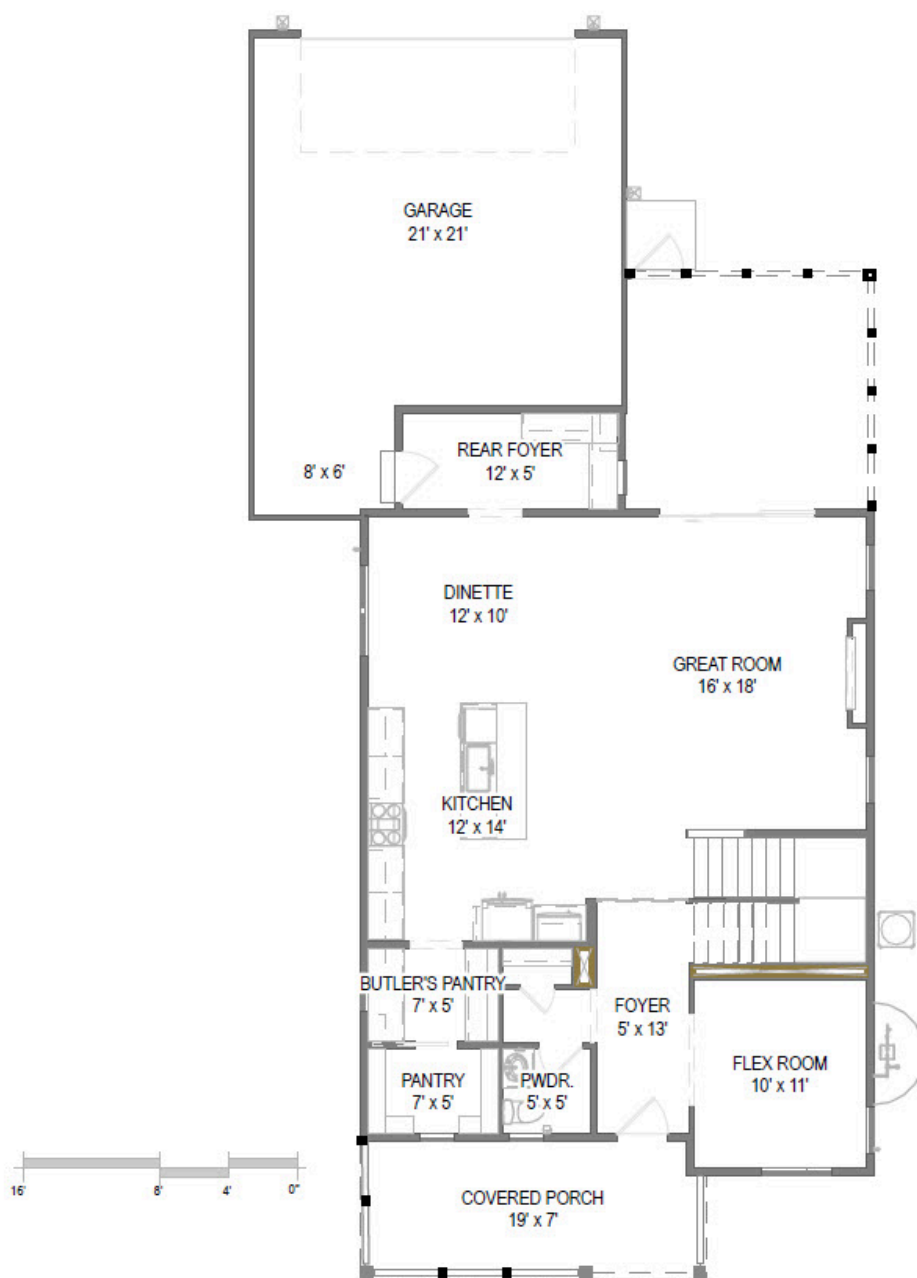
Upstairs, the home features a private Primary Bedroom with cathedral ceilings, a large walk-in closet, and a luxurious bath. Two additional bedrooms share a full bath, and the second-floor laundry room adds everyday ease.

4798 Lacy Road

Fitchburg, WI 53711

TIM O'BRIEN
homes

Call Today
(608) 401-4769



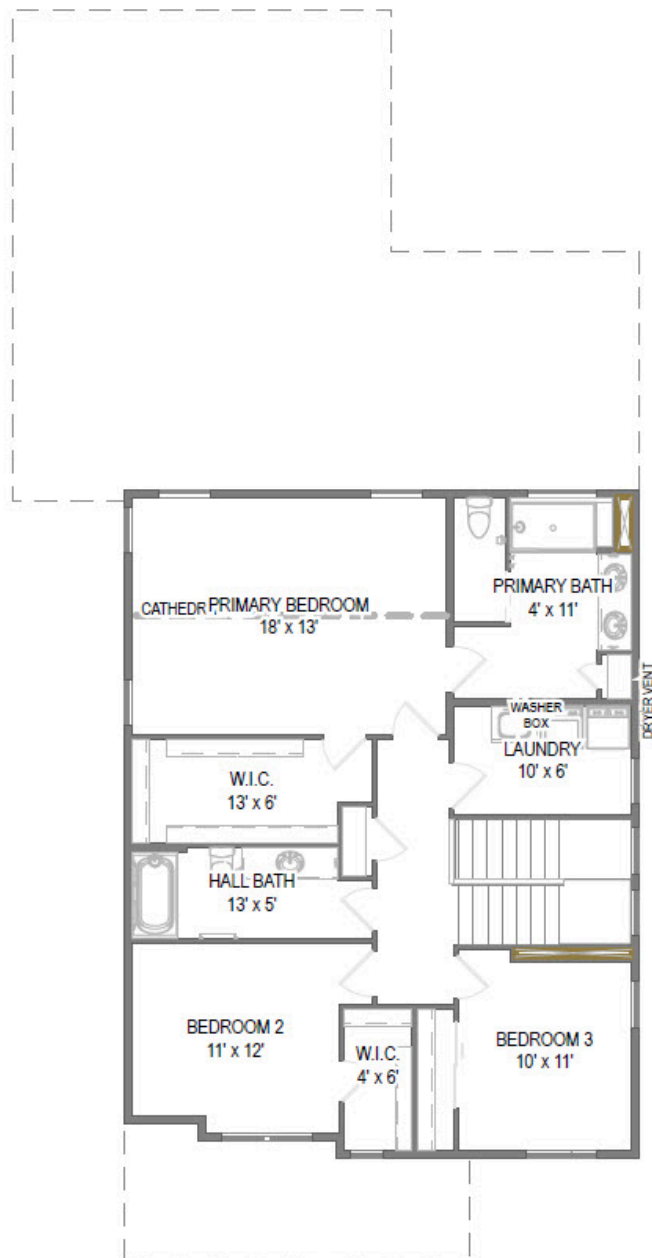
First Floor

4798 Lacy Road

Fitchburg, WI 53711

TIM O'BRIEN[®]
homes

Call Today
(608) 401-4769



Second Floor