

4815 Lacy Road

Fitchburg, WI 53711

TIM O'BRIEN
homes

Call Today
(608) 401-4769

UNDER CONSTRUCTION



PRICED AT

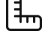
\$558,900

Neighborhood: Terravessa
Fitchburg, WI

Home Plan: The Monet

 2 Bedrooms

 2.0 Bathrooms

 1,602 Sq. Ft.

 2 Car Garage

The Monet is an open-concept, alley-loaded ranch home with both bedrooms and bathrooms located at the front of the home. On one side of the home is a secondary bedroom with a walk-in closet and an adjacent full bathroom, and on the other side is the Owner's Suite, which has a large walk-in closet and Owner's Bathroom with a linen closet. The living space beyond the bedrooms consists of a spacious Great Room, Dinette, and Kitchen with a corner walk-in pantry. The Rear Foyer features a Laundry Room, walk-in closet, and access to a private outdoor space.

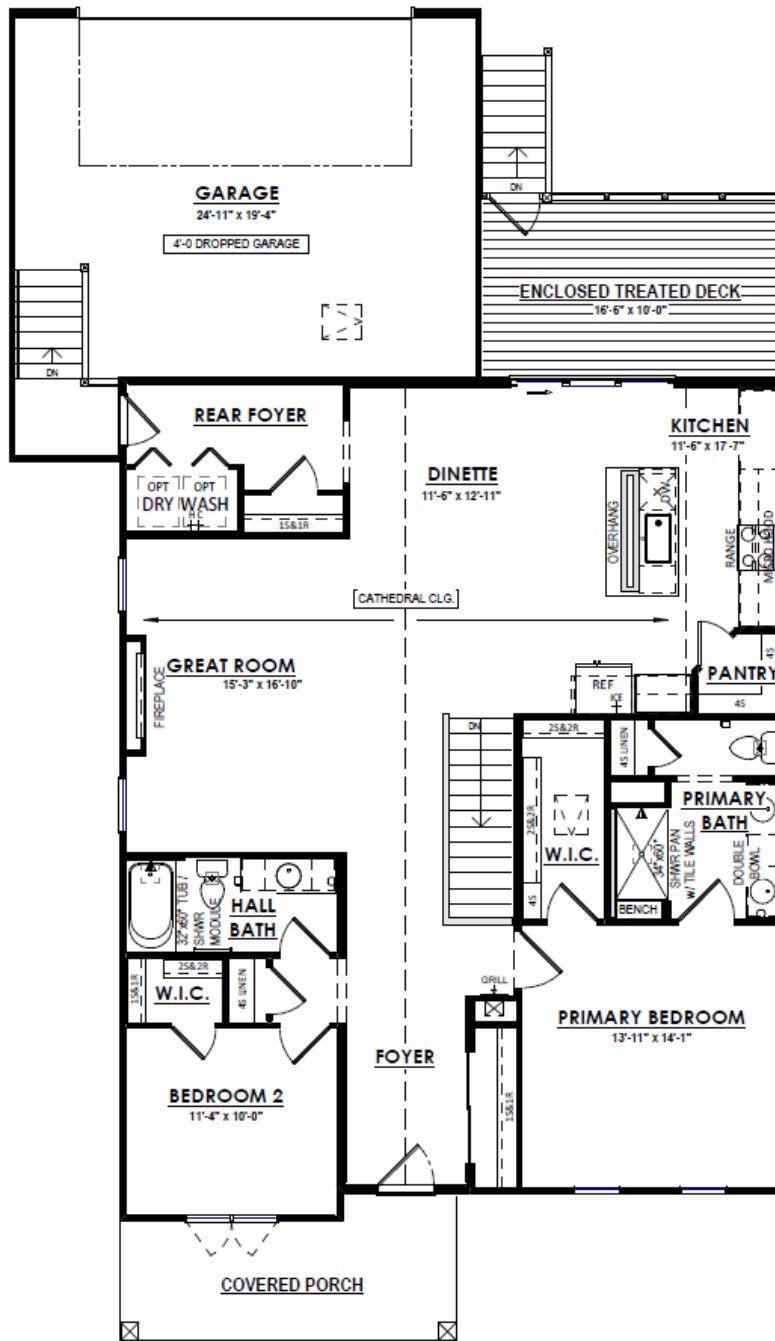
The information, text, graphics and links provided herein are provided by Tim O'Brien Homes as a convenience to its customers. Tim O'Brien Homes does not guarantee the accuracy or completeness of the information, text, graphics, links and other items contained on this website or any other website. All prices, promotions and specifications are subject to change at any time without notice based on the discretion of Tim O'Brien Homes.



4815 Lacy Road

Fitchburg, WI 53711

Call Today
(608) 401-4769



FIRST FLOOR PLAN

The information, text, graphics and links provided herein are provided by Tim O'Brien Homes as a convenience to its customers. Tim O'Brien Homes does not guarantee the accuracy or completeness of the information, text, graphics, links and other items contained on this website or any other website. All prices, promotions and specifications are subject to change at any time without notice based on the discretion of Tim O'Brien Homes.

