

# The Monet

Terravessa

TIM O'BRIEN  
homes

Call Today  
(608) 401-4769



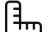
## Call for Price

**Home Style:** Single Family

4 Elevations Available

 2 Bedroom

 2 Bathrooms

 1,672 Sq. Ft.

 2 Car Garage

 49 HERS Score

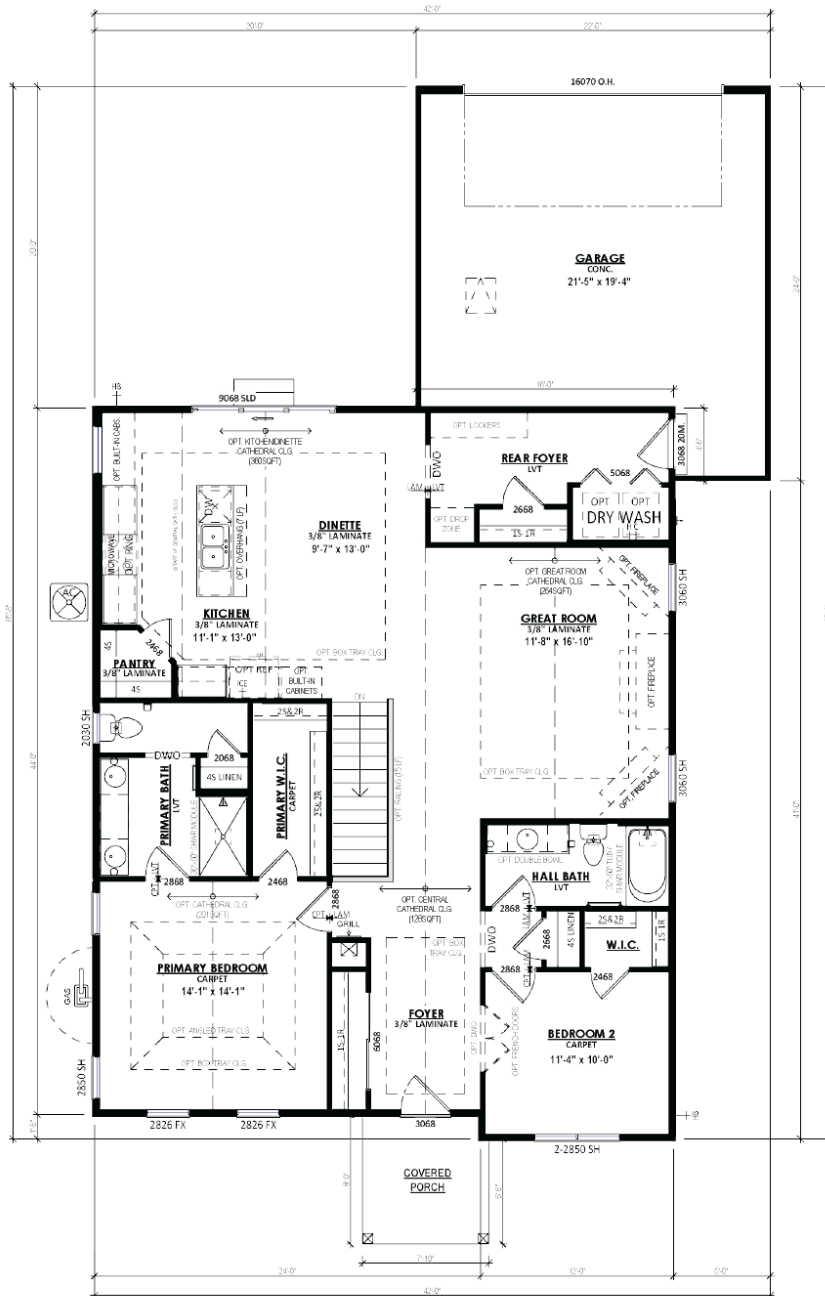
The Monet is an open-concept, alley-loaded ranch home thoughtfully designed with both bedrooms and bathrooms situated at the front of the home. One side of the home houses a secondary bedroom equipped with a walk-in closet and a conveniently placed full bathroom. On the opposite side, you'll find the Primary Suite, complete with a large walk-in closet and an en suite bathroom featuring a linen closet. Beyond the bedrooms lies a generous living space, comprising a spacious Great Room, a Dinette, and a Kitchen with a corner walk-in pantry. The Rear Foyer comes complete with a Laundry Room, a walk-in closet, and access to a private outdoor retreat.

# The Monet

Terravessa



Call Today  
(608) 401-4769



**FIRST FLOOR PLAN**

The information, text, graphics and links provided herein are provided by Tim O'Brien Homes as a convenience to its customers. Tim O'Brien Homes does not guarantee the accuracy or completeness of the information, text, graphics, links and other items contained on this website or any other website. All prices, promotions and specifications are subject to change at any time without notice based on the discretion of Tim O'Brien Homes.

