

The Kahlo

Terravessa

TIM O'BRIEN
homes

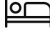
Call Today
(608) 401-4769



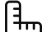
Call for Price

Home Style: Single Family

3 Elevations Available

 2 - 4 Bedroom

 2.5 Bathrooms

 1,872 Sq. Ft.

 2 Car Garage

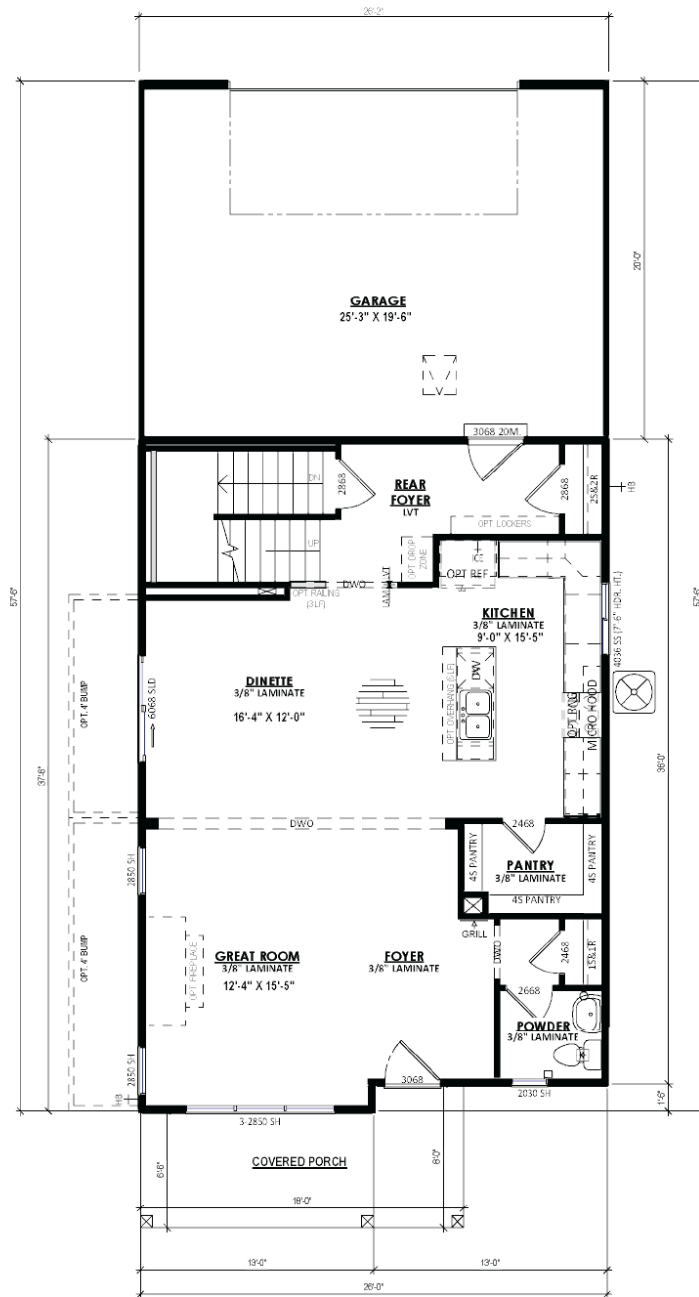
 49 HERS Score

The Kahlo is a thoughtfully structured two-story alley plan, boasting two bedrooms and two and a half bathrooms. As you step inside, you're immediately welcomed by a spacious living area, integrating the Great Room, Dinette, and a Kitchen furnished with a large corner walk-in pantry. The staircase leading to the upper level is strategically placed in the Rear Foyer at the back of the home. The upper level houses both bedrooms, including a substantial Primary Suite that flaunts an oversized walk-in closet and a lavish bathroom. Adding to the functionality, the Laundry Room is also located upstairs, along with an additional bedroom and full bathroom. For those requiring more living space or bedrooms, an option to expand over the garage is available.

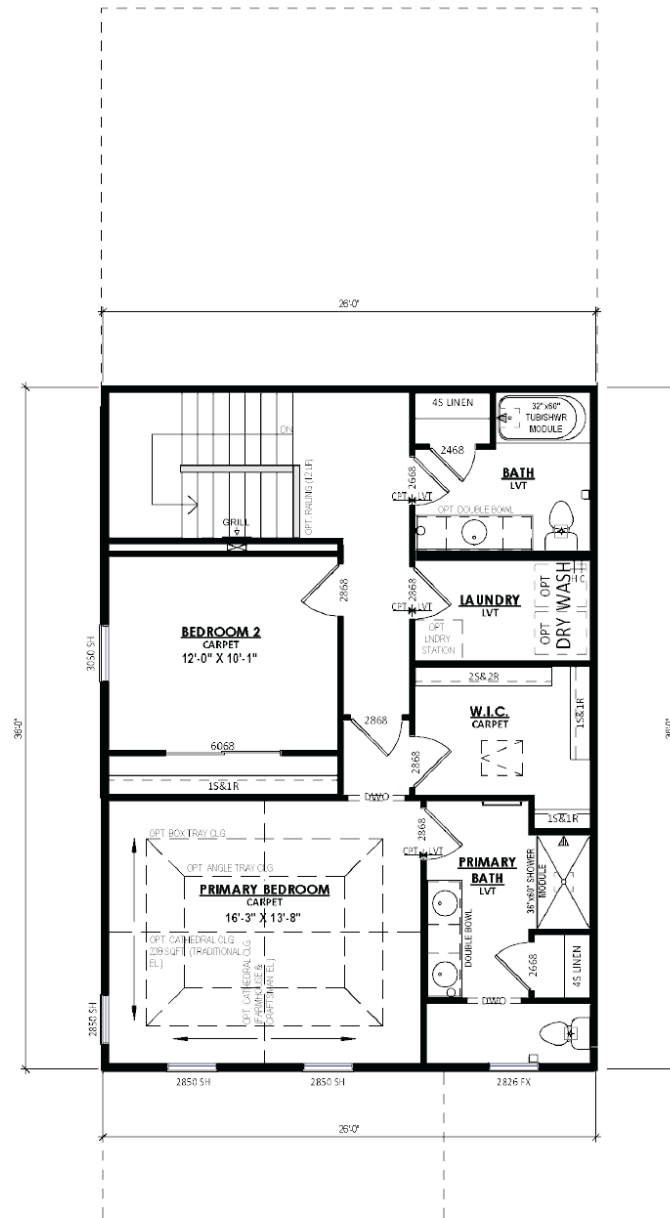
The Kahlo

Terravessa

Call Today
(608) 401-4769



Call Today
(608) 401-4769



SECOND FLOOR PLAN