

4785 Lacy Road

Fitchburg, WI 53711

TIM O'BRIEN
homes

Call Today
(608) 401-4769

UNDER CONSTRUCTION







PRICED AT

\$534,875

Neighborhood: Terravessa
Fitchburg, WI

Home Plan: The Cassatt

 2 Bedrooms
 2.0 Bathrooms
 1,303 Sq. Ft.
 2 Car Garage

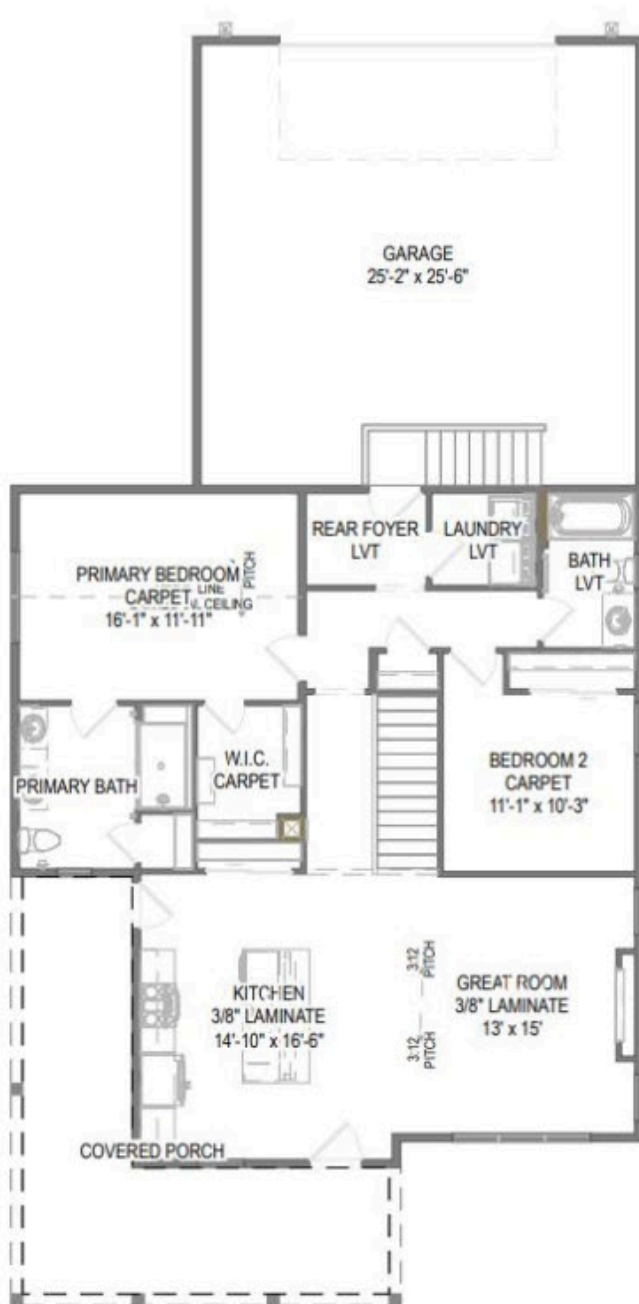
Healthy, Energy-Efficient, NEW Construction, Built for the way you live! The Cassatt ranch plan is move-in ready this August & nestled in a neighborhood close to parks, walking trails, shops and school. This charming home features an oversized wrap around front porch to enjoy your morning coffee. Step inside to an open concept living space. The Great Room features a cozy fireplace and the luxury kitchen features stainless appliances, quartz countertops & soft close cabinets. Primary bedroom features cathedral ceilings, en-suite bath w/ luxury tiled shower, dual sink vanity & large walk-in closet. Comes w/ Tim O'Brien Homes extensive warranties.

4785 Lacy Road

Fitchburg, WI 53711

TIM O'BRIEN
homes

Call Today
(608) 401-4769



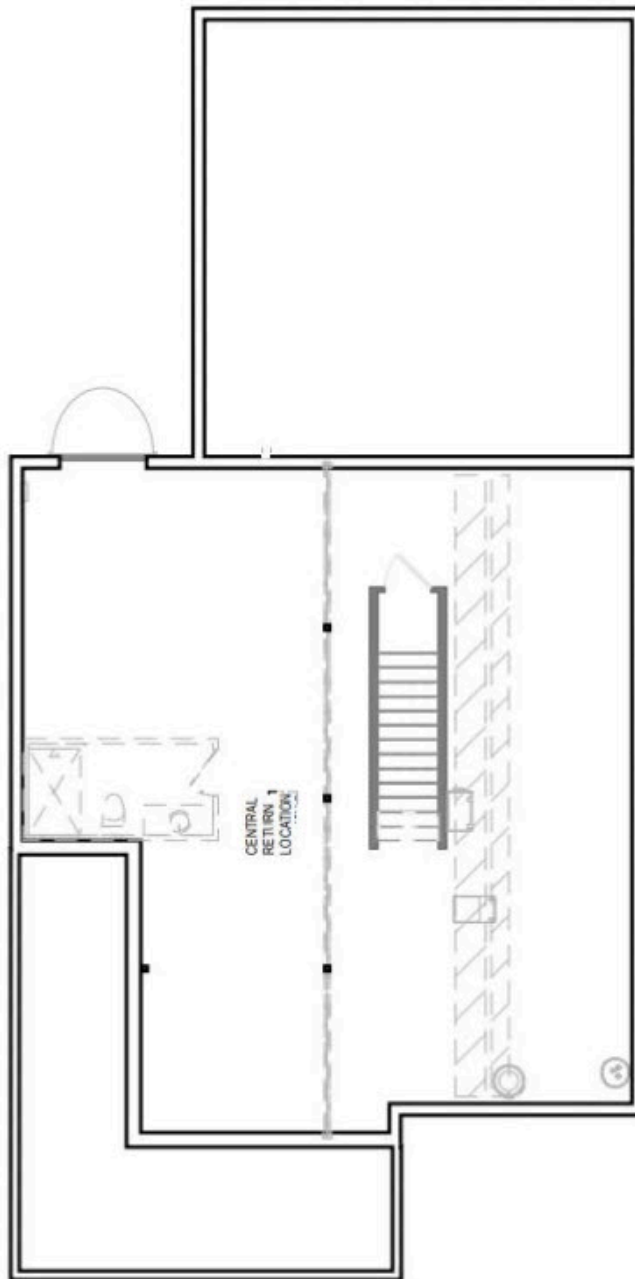
First Floor

4785 Lacy Road

Fitchburg, WI 53711

TIM O'BRIEN[®]
homes

Call Today
(608) 401-4769



Basement