

4826 Lacy Road

Fitchburg, WI 53711

TIM O'BRIEN
homes

Call Today
(608) 401-4769

UNDER CONSTRUCTION



PRICED AT


\$553,900

Neighborhood: Terravessa
Fitchburg, WI

Home Plan: The Abbott

 3 Bedrooms

 2.5 Bathrooms

 2,029 Sq. Ft.

 2.5 Car Garage

The Abbott is a welcoming 2-story plan with an alley garage design. The plan invites you into a wide open living space off the front door which includes the Great Room, Dinette and Kitchen. The Flex Room is located toward the back of the home and provides a quiet area perfect for a home office. The Rear Foyer includes a Laundry Room with a walk-in closet and a powder room and leads out to the garage. All three bedrooms are on the second level including the spacious Owner's Suite, which has a large walk-in closet and a luxurious Owner's bathroom.



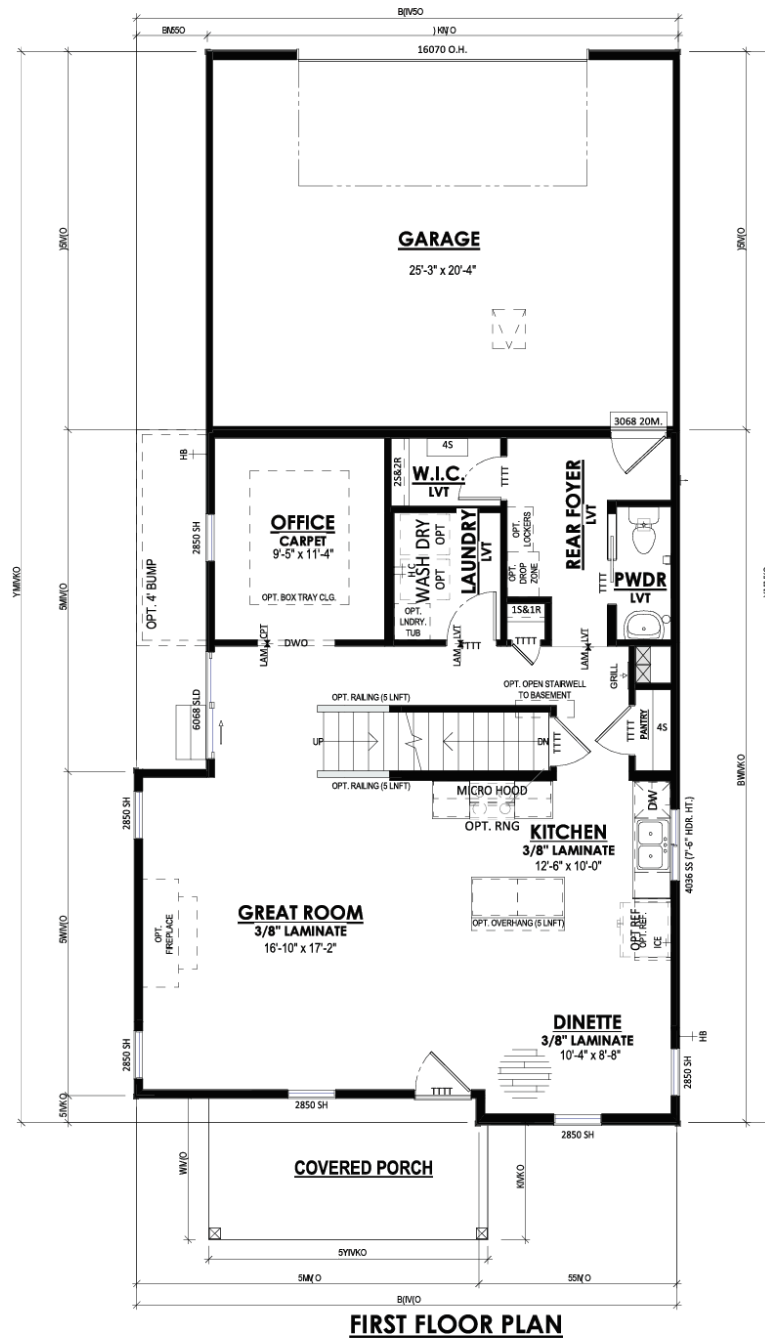
The information, text, graphics and links provided herein are provided by Tim O'Brien Homes as a convenience to its customers. Tim O'Brien Homes does not guarantee the accuracy or completeness of the information, text, graphics, links and other items contained on this website or any other website. All prices, promotions and specifications are subject to change at any time without notice based on the discretion of Tim O'Brien Homes.



4826 Lacy Road

Fitchburg, WI 53711

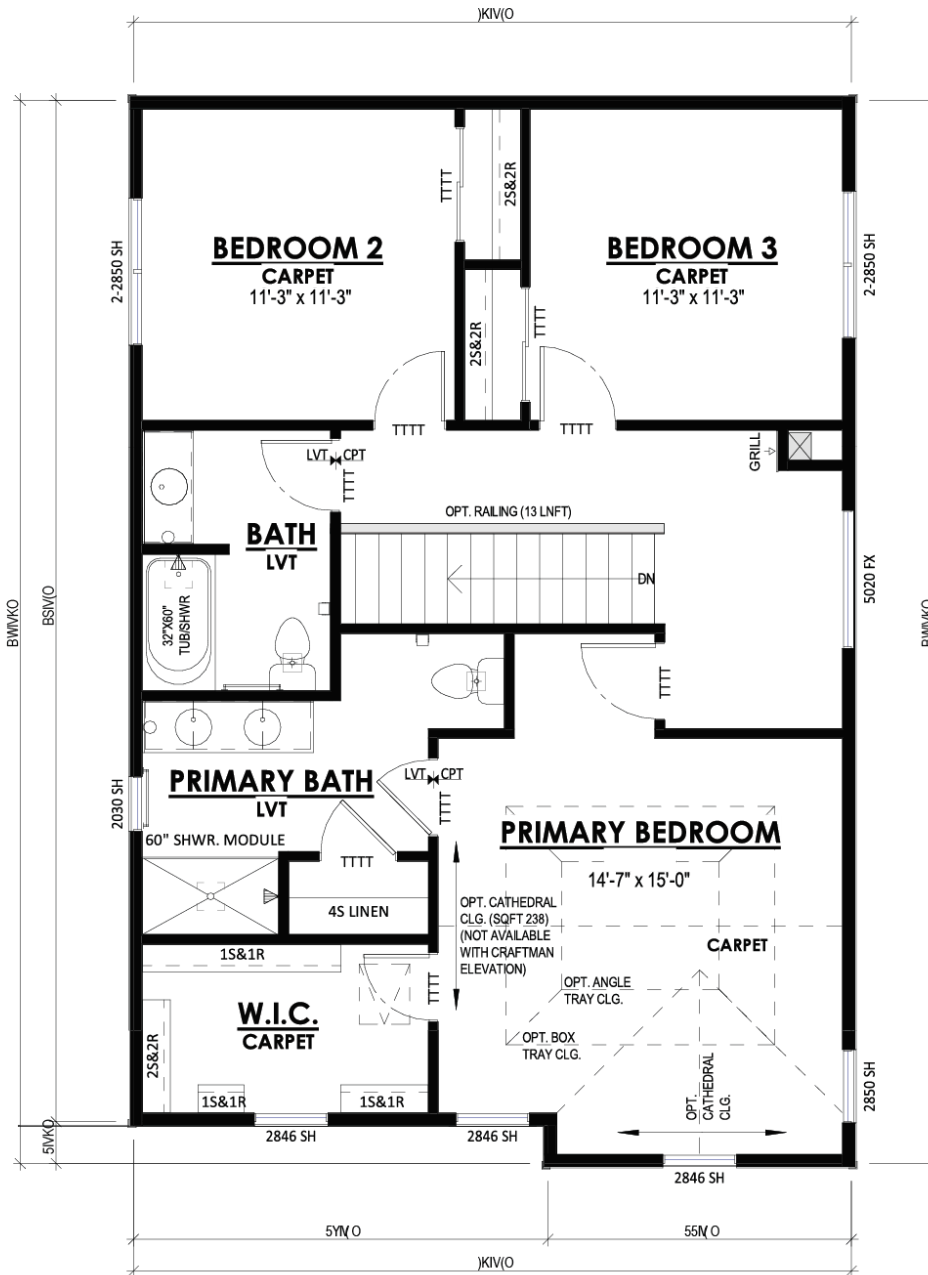
Call Today
(608) 401-4769



4826 Lacy Road

Fitchburg, WI 53711

Call Today
(608) 401-4769



STANDARD SECOND FLOOR