

4822 Lacy Road

Fitchburg, WI 53711

TIM O'BRIEN
homes

Call Today
(608) 401-4769

UNDER CONSTRUCTION



PRICED AT

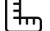
\$562,900

Neighborhood: Terravessa
Fitchburg, WI

Home Plan: The Abbott

 3 Bedrooms

 2.5 Bathrooms

 2,029 Sq. Ft.

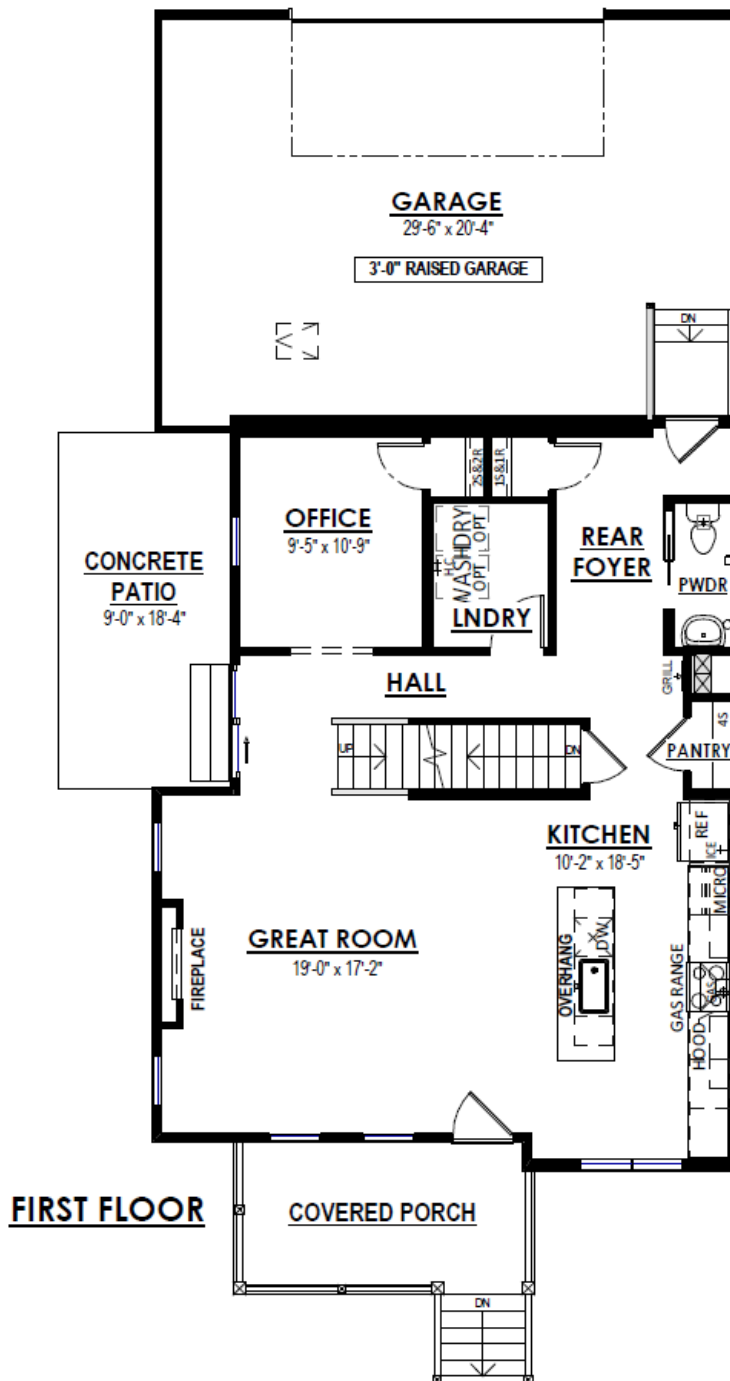
 2.5 Car Garage

The Abbott is a welcoming 2-story plan with an alley garage design. The plan invites you into a wide open living space off the front door which includes the Great Room, Dinette and Kitchen. The Flex Room is located toward the back of the home and provides a quiet area perfect for a home office. The Rear Foyer includes a Laundry Room with a walk-in closet and a powder room and leads out to the garage. All three bedrooms are on the second level including the spacious Owner's Suite, which has a large walk-in closet and a luxurious Owner's bathroom.

4822 Lacy Road

Fitchburg, WI 53711

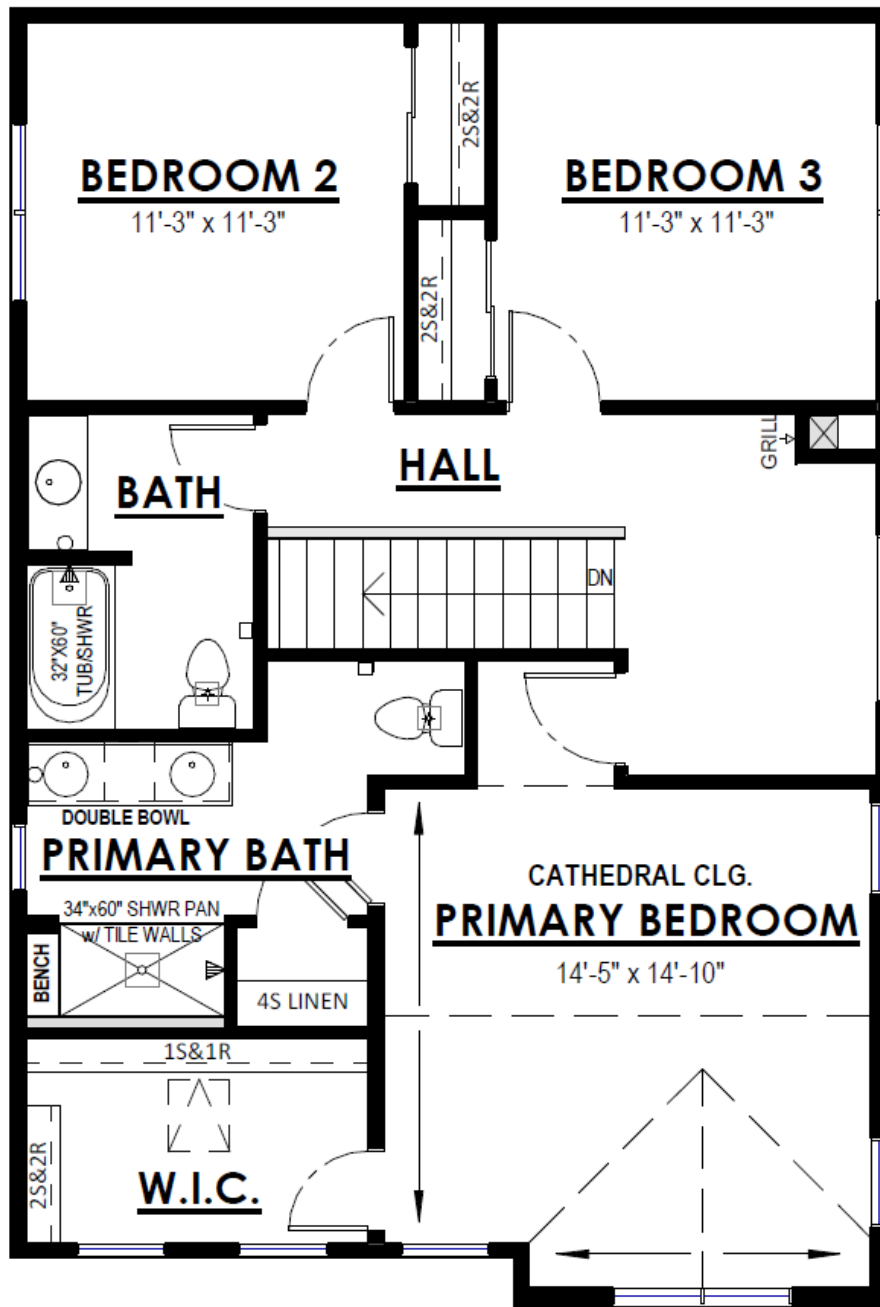
Call Today
(608) 401-4769



4822 Lacy Road

Fitchburg, WI 53711

Call Today
(608) 401-4769



SECOND FLOOR