

# The Abbott

Terravessa

TIM O'BRIEN  
homes

Call Today  
(608) 401-4769



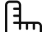
## Call for Price


**Home Style:** Two-Story

3 Elevations Available

 3 - 4 Bedroom

 2.5 Bathrooms

 1,953 Sq. Ft.

 2 Car Garage

 49 HERS Score

Experience the homely allure of The Abbott, a 2-story design featuring a thoughtful alley-access garage and comfortable living spaces. Upon entering, you're greeted by a generous, interconnected area encompassing the Great Room, Dinette, and Kitchen, all tailored for an open-plan living. Tucked towards the rear of the house is a Flex Room, a tranquil nook that is perfect for setting up a home office. The Rear Foyer hosts a practical Laundry Room, a walk-in closet and a discreet powder room, all leading to the garage. On the second floor, you'll find three bedrooms, including the spacious Primary Suite. This suite offers a sizable walk-in closet and an elegant bathroom, ensuring an ideal blend of style and comfort.



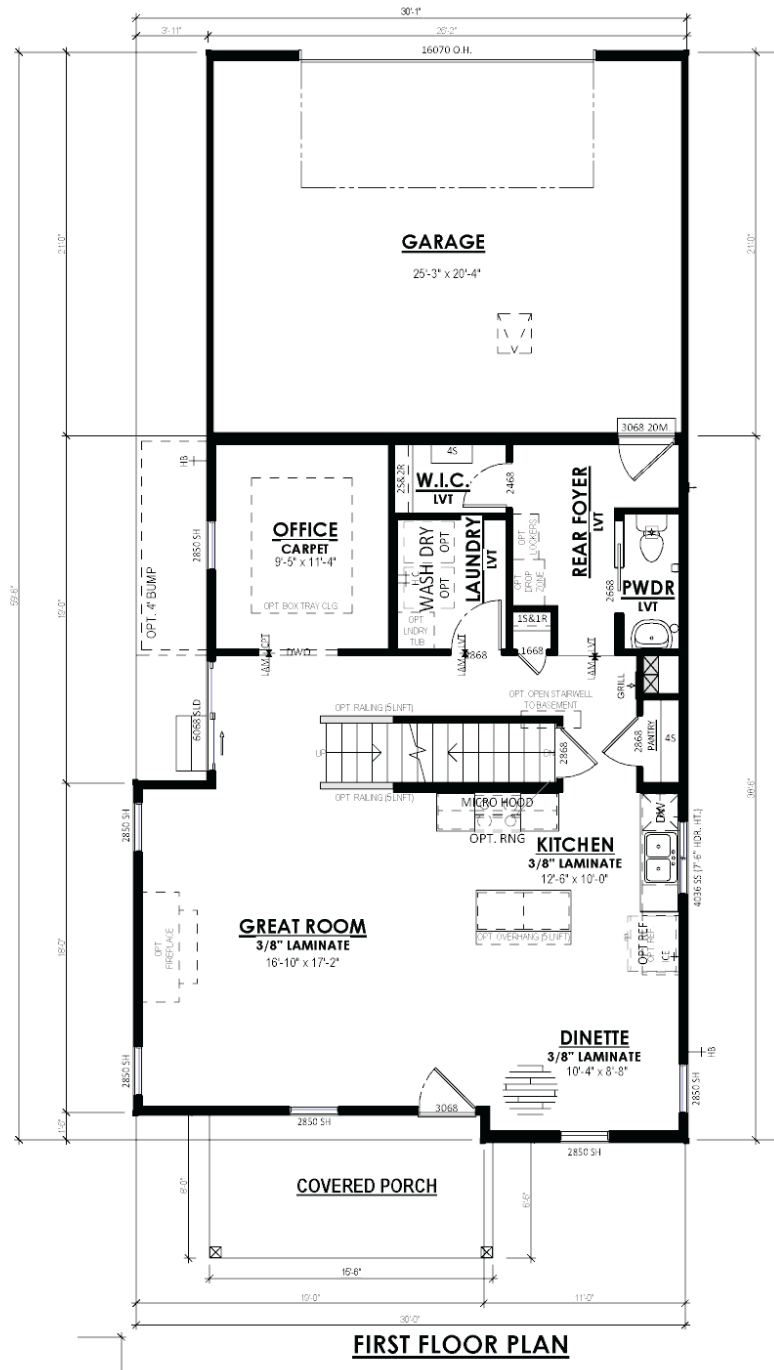
The information, text, graphics and links provided herein are provided by Tim O'Brien Homes as a convenience to its customers. Tim O'Brien Homes does not guarantee the accuracy or completeness of the information, text, graphics, links and other items contained on this website or any other website. All prices, promotions and specifications are subject to change at any time without notice based on the discretion of Tim O'Brien Homes.

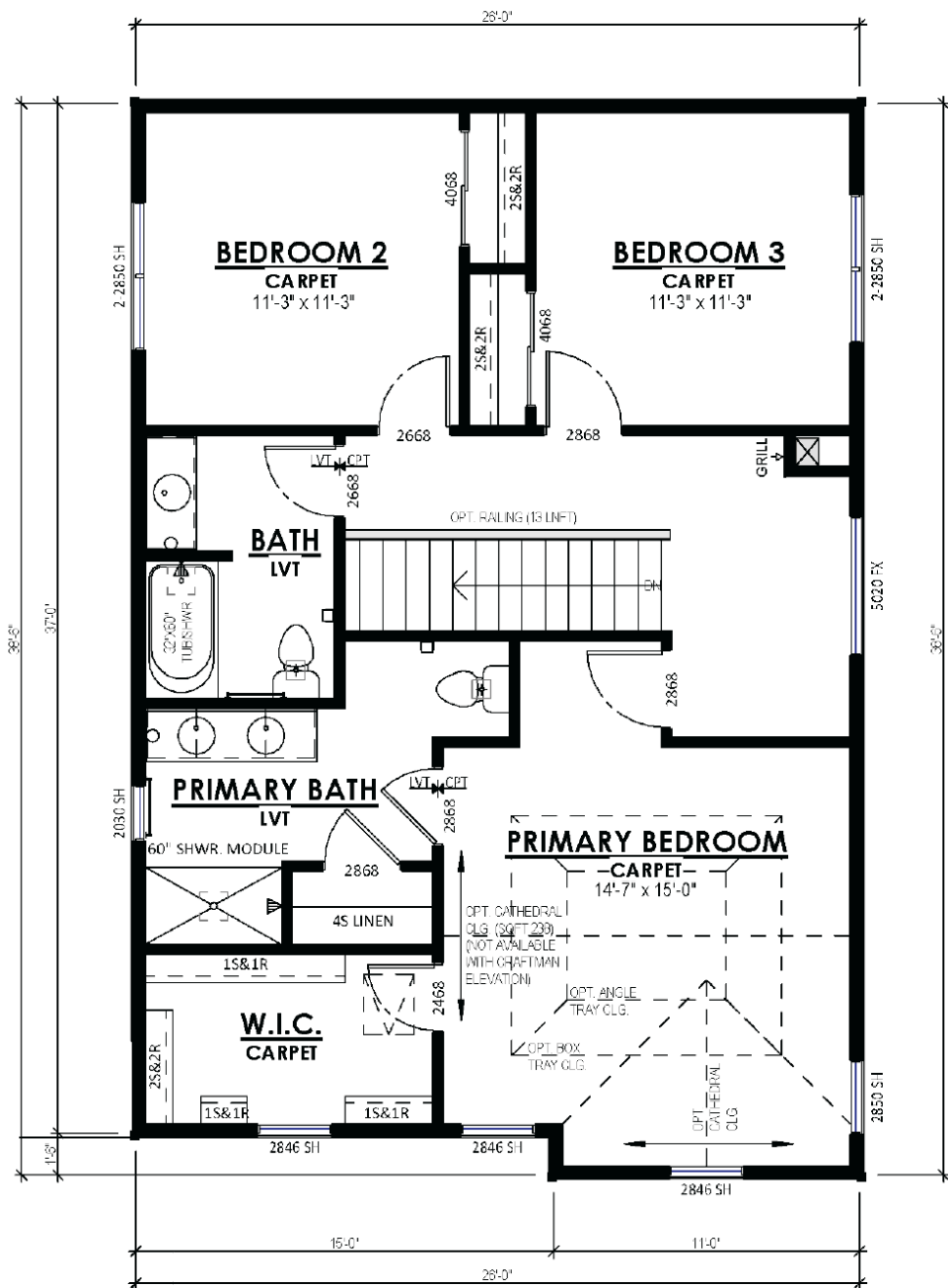


Terravessa



**Call Today**  
**(608) 401-4769**





**STANDARD SECOND FLOOR**