

The Waterberry

Bear Tree Farms

TIM O'BRIEN
homes

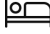
Call Today
(608) 480-5963

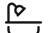


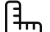
Call for Price

Home Style: Single Family

6 Elevations Available

 4 - 5 Bedroom

 2.5 - 3 Bathrooms

 2,395 Sq. Ft.

 2 Car Garage

 49 HERS Score

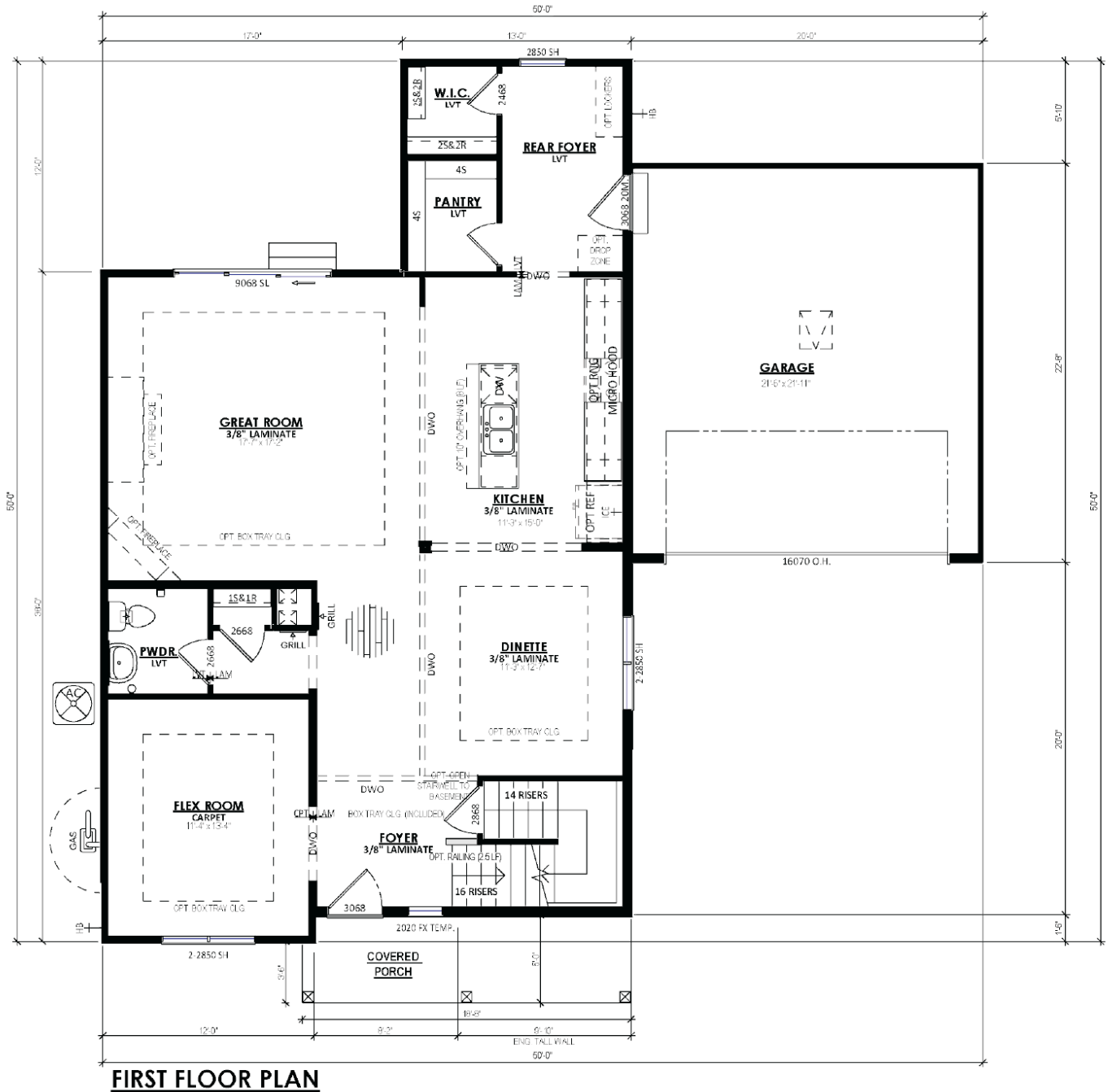
The Waterberry is a spacious and functional home with a well-defined Dinette that flows into the Kitchen with an extended island and Great Room with access to an outdoor space. The kitchen is perfect for cooking up your favorite meals. The first floor also includes a versatile Flex Room with a closet that can be converted into a fifth bedroom, as well as a Powder Room and linen closet. Upstairs are three secondary bedrooms with a full bathroom, a convenient Laundry Room, and a Primary Suite with a walk-in closet and toilet room.

The Waterberry

Bear Tree Farms



Call Today
(608) 480-5963



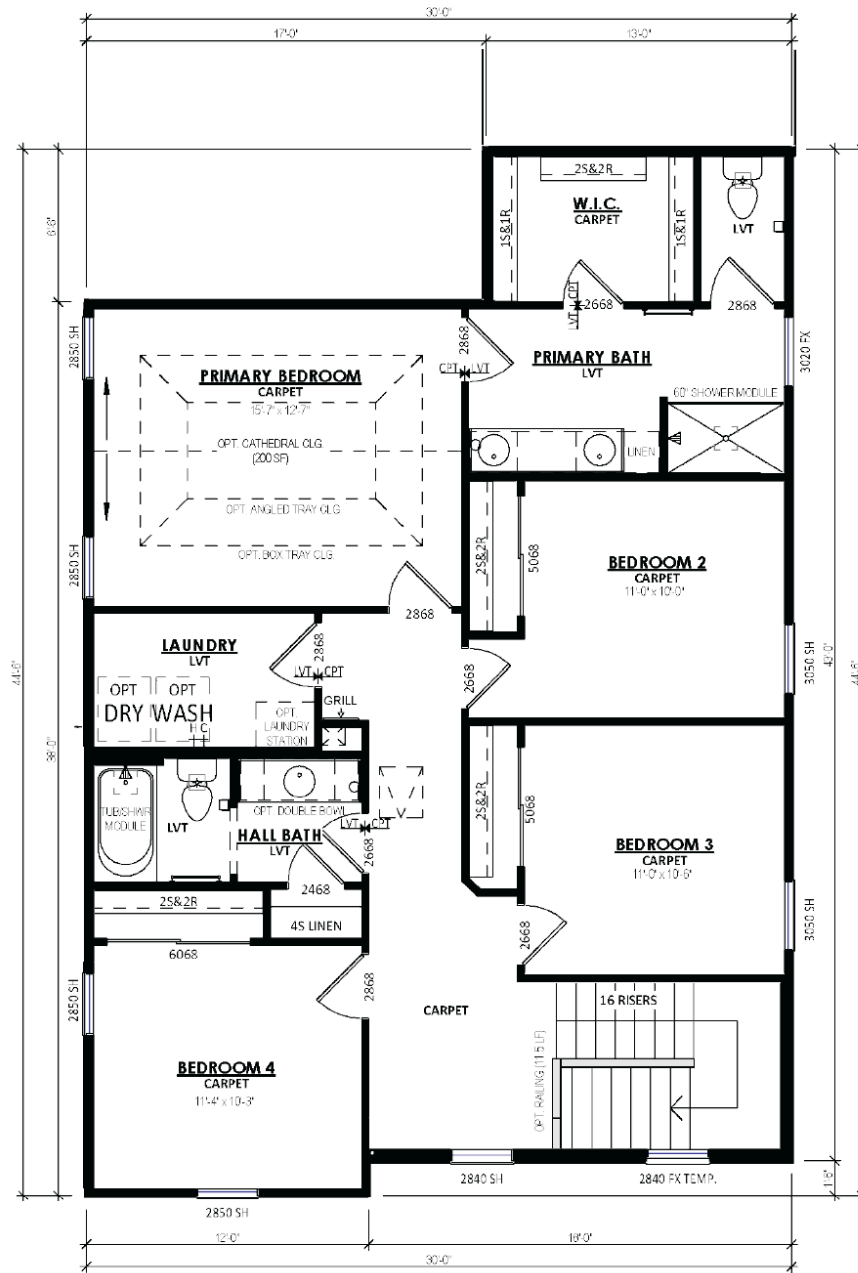
The information, text, graphics and links provided herein are provided by Tim O'Brien Homes as a convenience to its customers. Tim O'Brien Homes does not guarantee the accuracy or completeness of the information, text, graphics, links and other items contained on this website or any other website. All prices, promotions and specifications are subject to change at any time without notice based on the discretion of Tim O'Brien Homes.



The Waterberry

Bear Tree Farms

Call Today
(608) 480-5963



SECOND FLOOR PLAN

