

554 Fundamental Way

Cottage Grove, WI 53527

TIM O'BRIEN
homes

Call Today
(608) 401-4769

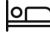
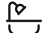
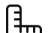

UNDER CONSTRUCTION



PRICED AT

\$479,900

Neighborhood: Shady Grove
3190 Drumlin Rdg Dr, Cottage Grove, WI

-  3 Bedrooms
-  2.5 Bathrooms
-  2,035 Sq. Ft.
-  2 Car Garage

Under construction twin home By Tim O'Brien Homes of Madison. Completion date approximate end of October. Welcome friends and family into open, inviting and define spaces where there's plenty of room to entertain, play games or stay in for a cozy night. This twin homes features a kitchen with many goodies of solid surface countertops, custom cabinets and full suite of stainless appliances. Great room features lots of natural light with and features a fireplace to admire and heat too. Upstairs, it will feature a spacious primary suite with full bathroom and shower module and 2 additional bedrooms with both featuring walk-in closets. Second floor laundry spacious with a perfect decorating canvas to create your personal touches. Great Value in a new convenient neighborhood... Shady Grove.

The information, text, graphics and links provided herein are provided by Tim O'Brien Homes as a convenience to its customers. Tim O'Brien Homes does not guarantee the accuracy or completeness of the information, text, graphics, links and other items contained on this website or any other website. All prices, promotions and specifications are subject to change at any time without notice based on the discretion of Tim O'Brien Homes.

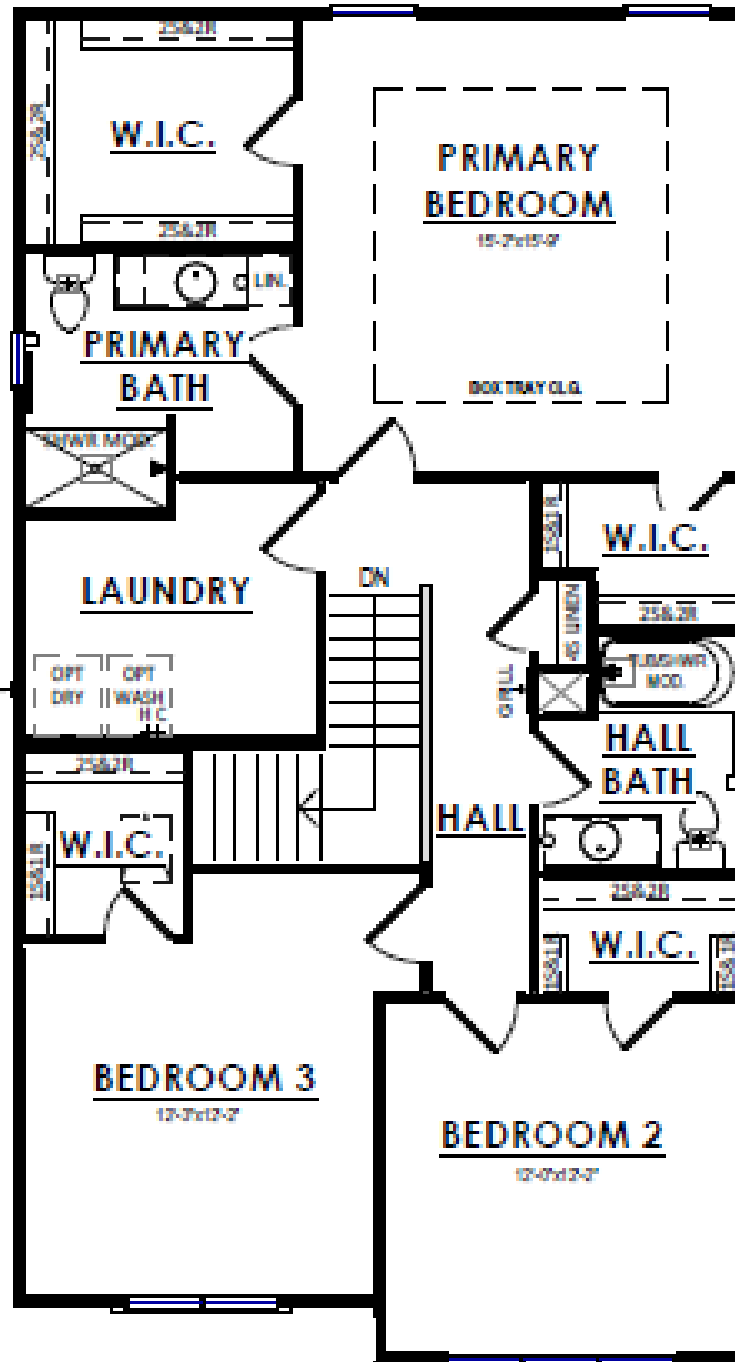


554 Fundamental Way

Cottage Grove, WI 53527



Call Today
(608) 401-4769



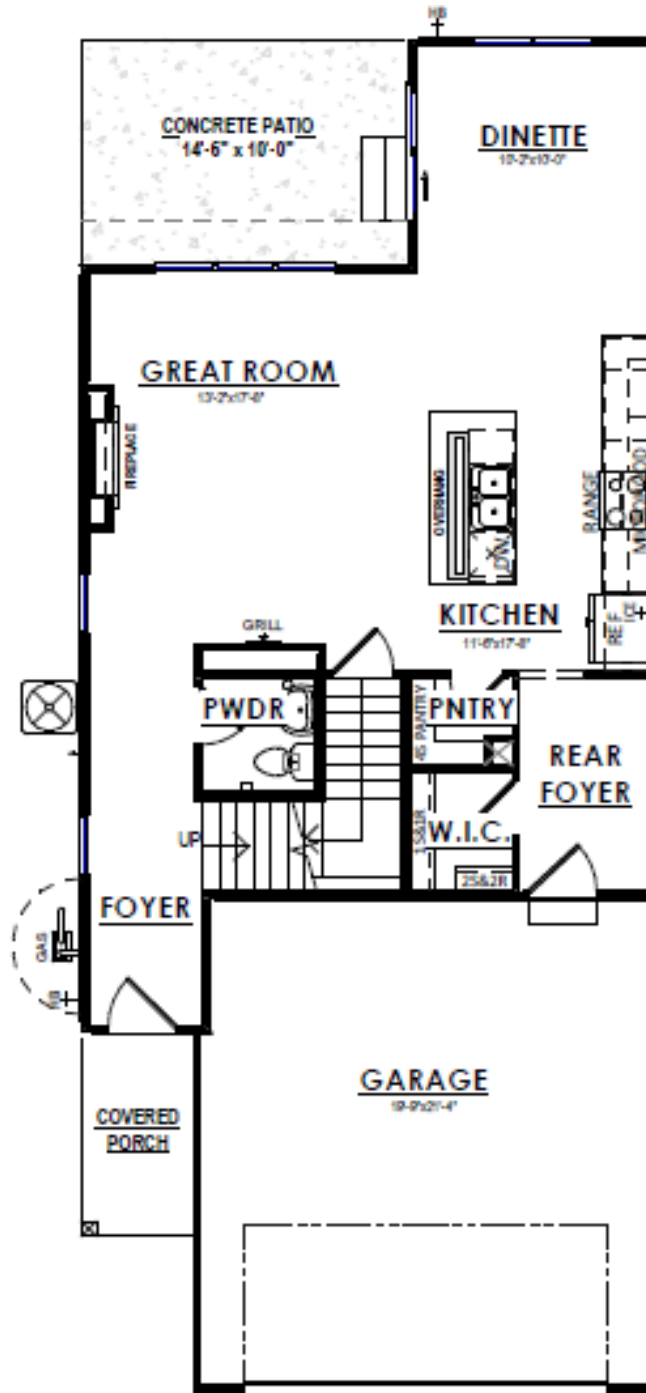
The information, text, graphics and links provided herein are provided by Tim O'Brien Homes as a convenience to its customers. Tim O'Brien Homes does not guarantee the accuracy or completeness of the information, text, graphics, links and other items contained on this website or any other website. All prices, promotions and specifications are subject to change at any time without notice based on the discretion of Tim O'Brien Homes.



554 Fundamental Way

Cottage Grove, WI 53527

Call Today
(608) 401-4769



The information, text, graphics and links provided herein are provided by Tim O'Brien Homes as a convenience to its customers. Tim O'Brien Homes does not guarantee the accuracy or completeness of the information, text, graphics, links and other items contained on this website or any other website. All prices, promotions and specifications are subject to change at any time without notice based on the discretion of Tim O'Brien Homes.

