

518 Shady Street

Cottage Grove, WI 53527

TIM O'BRIEN
homes

Call Today
(608) 401-4769

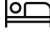



UNDER CONSTRUCTION



PRICED AT

\$637,875

Neighborhood: Shady Grove
3190 Drumlin Rdg Dr, Cottage Grove, WI

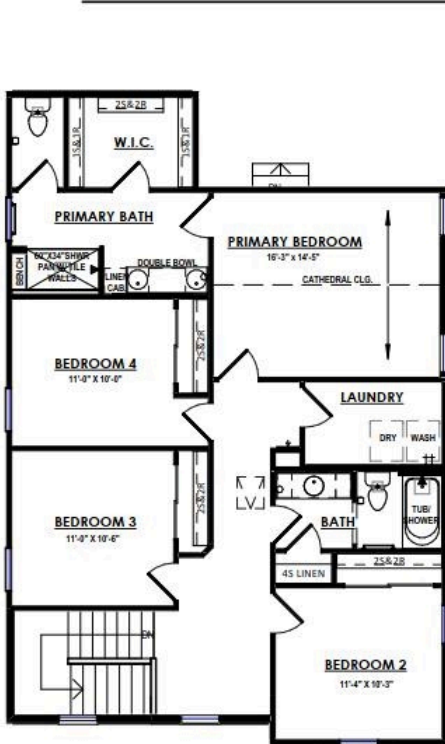
-  5 Bedrooms
-  2.5 Bathrooms
-  2,467 Sq. Ft.
-  3 Car Garage

New construction home move-in ready in March 2025. Tim O'Brien Homes presents "The Waterberry" welcoming you with a spacious foyer and open concept layout on the main level. The spacious kitchen boasts an extra large pantry, open to the dining and great rooms with a 55" cozy electric fireplace. The main level also features a 5th bedroom with adjacent full bathroom. Upstairs you'll find 4 bedrooms, including a large primary bedroom with cathedral ceilings, walk-in closet and en-suite bathroom with a tiled shower with bench, as well as conveniently located 2nd floor laundry room. Plenty of room in the 3 car garage. Located in a picturesque and vibrant neighborhood, Shady Grove. Schedule a tour today and learn more about Tim O'Brien Homes green building and extensive warranties!

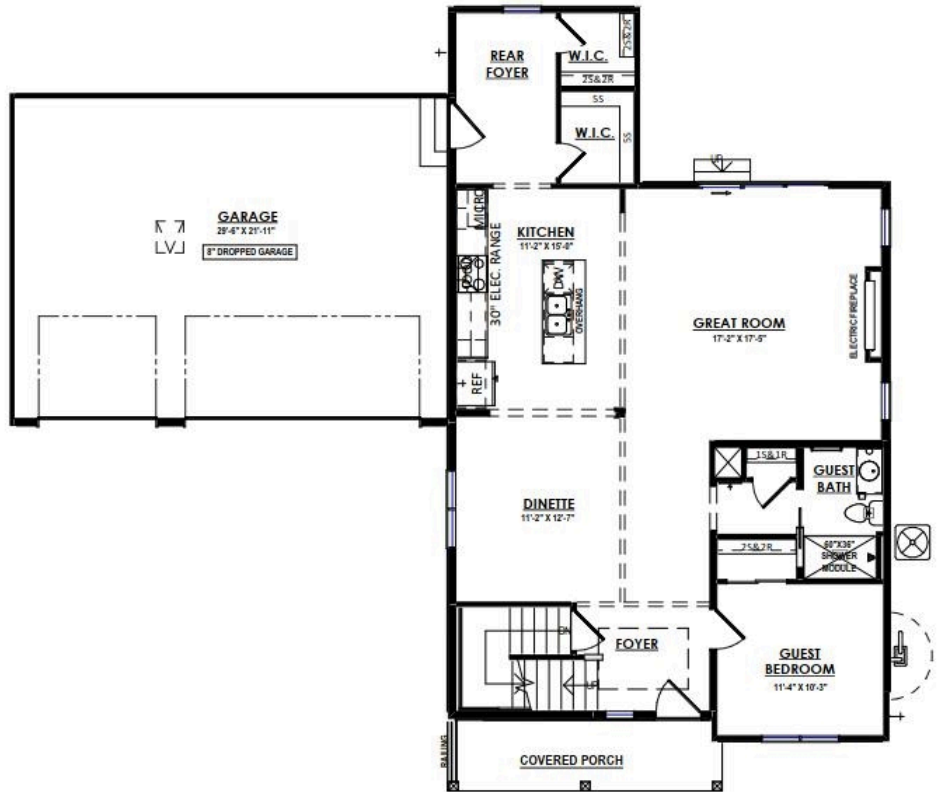
518 Shady Street

Cottage Grove, WI 53527

Call Today
(608) 401-4769



SECOND FLOOR PLAN



FIRST FLOOR PLAN