

511 Buss Road

Cottage Grove, WI 53527

TIM O'BRIEN
homes

Call Today
(608) 401-4769

MOVE-IN READY



PRICED AT

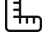
\$668,850


Neighborhood: Shady Grove

3190 Drumlin Rdg Dr, Cottage Grove, WI

 3 Bedrooms

 2.5 Bathrooms

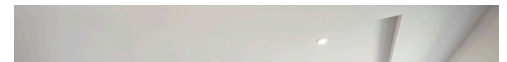
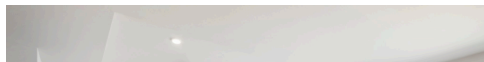
 2,261 Sq. Ft.

 3 Car Garage

The Sage is a spacious ranch-style home with all bedrooms located on one side for ultimate convenience. When you walk in, you're welcomed by a large Foyer that serves as the gateway to the stairs leading to the lower level, as well as two secondary bedrooms, each featuring walk-in closets, and a full bathroom. Another Powder Room is handily situated just off the Front Foyer, right before the floor plan opens up into a generous living area. This combines the Great Room, Kitchen, and a sunlit, extended Dinette, perfect for family gatherings.

What sets this design apart is the unique "back kitchen" space, tucked away for added privacy. This area is perfect for prepping meals or as a secondary space to keep things organized and out of sight, making the main kitchen area clutter-free.

On the opposite end of the Kitchen, a Rear Foyer leads to a walk-in pantry and Laundry Room. Finally, the secluded Primary Suite is located in the back corner, highlighted by a substantial walk-in closet, providing a peaceful retreat within the home



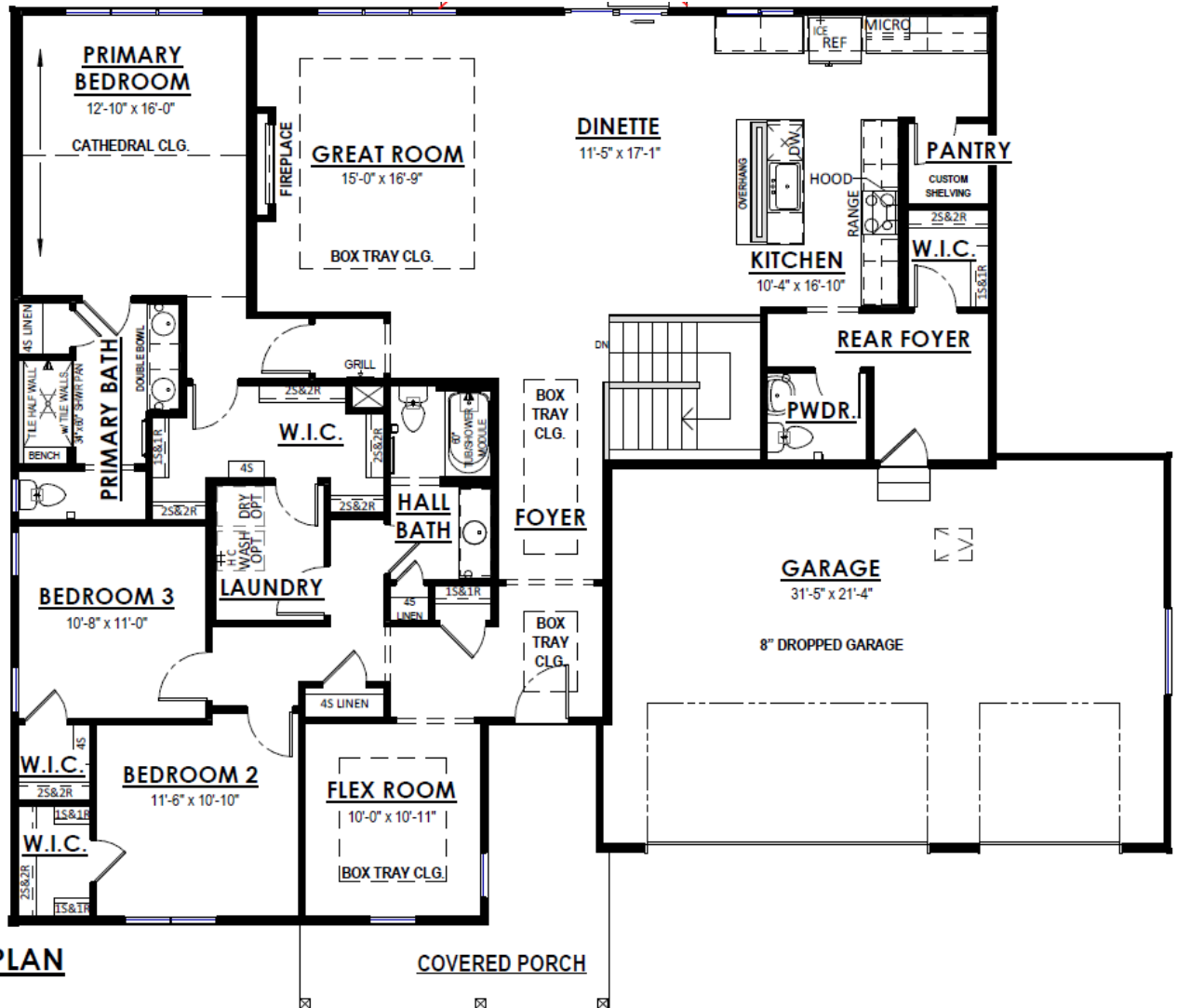
The information, text, graphics and links provided herein are provided by Tim O'Brien Homes as a convenience to its customers. Tim O'Brien Homes does not guarantee the accuracy or completeness of the information, text, graphics, links and other items contained on this website or any other website. All prices, promotions and specifications are subject to change at any time without notice based on the discretion of Tim O'Brien Homes.



511 Buss Road

Cottage Grove, WI 53527

Call Today
(608) 401-4769



FIRST FLOOR PLAN