

416 Max Kolbe Circle

Cottage Grove, WI 53527

TIM O'BRIEN
homes

Call Today
(608) 401-4769

UNDER CONSTRUCTION



PRICED AT

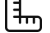
\$622,900

Neighborhood: Shady Grove

3190 Drumlin Rdg Dr, Cottage Grove, WI

 3 Bedrooms

 2.5 Bathrooms

 2,086 Sq. Ft.

 2 Car Garage

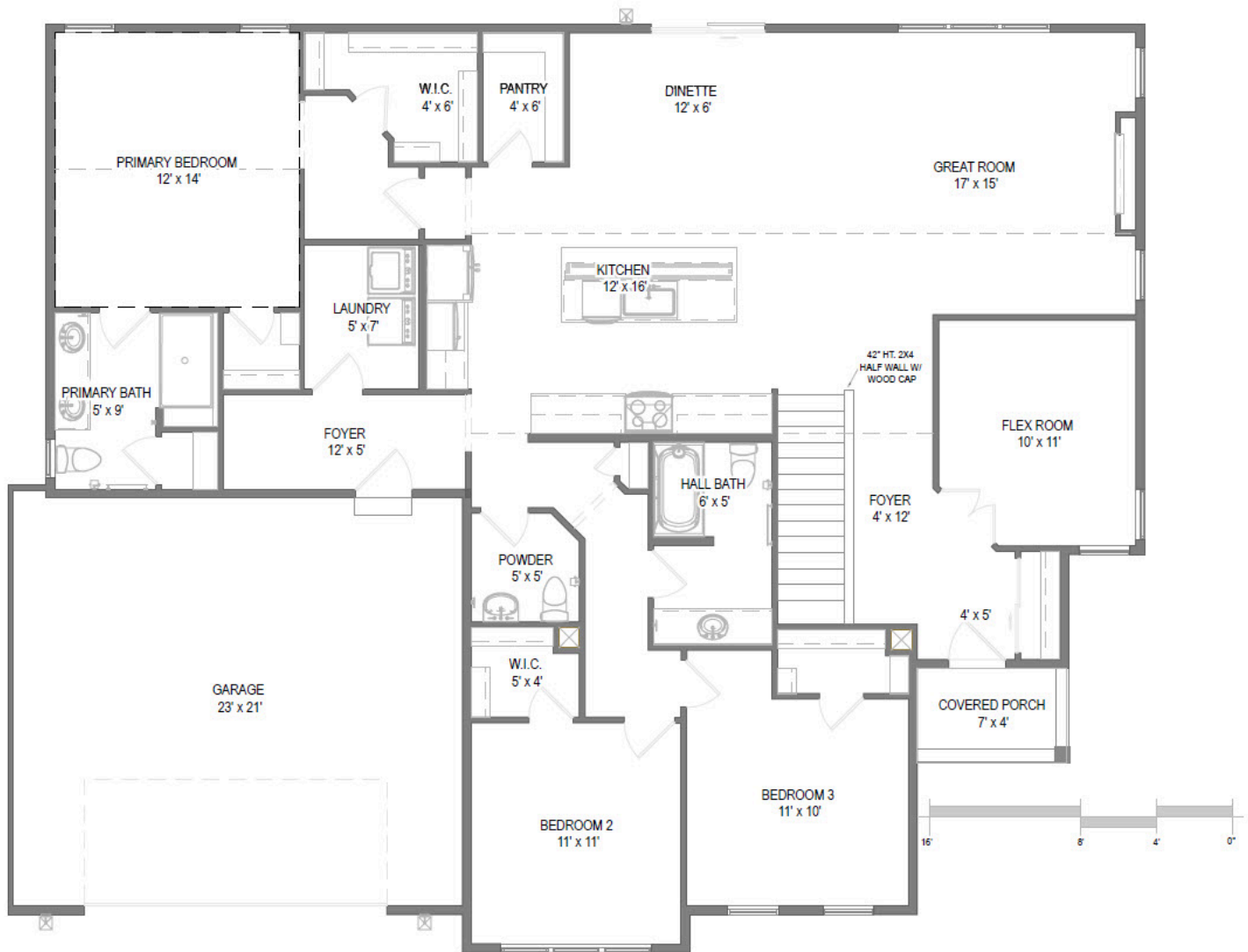
Under construction. Completion end of November 2024. Tim O'Brien Homes Newest single story plan, "The Walnut." This home has many options, One of the most prominent building feature is our green built specifications and with a guarantee Energy efficient usage by a third party verification. Trendy finishes with oyster color and wood custom kitchen cabinets, soft close drawers and doors. Kitchen also features a walk in pantry and the entire home is filled with windows in every room. Let the sunshine in! The primary bedroom has a cathedral ceiling, double vanities and a lovely tiled shower. Also primary features 2 walk in closet. Bedroom 2 and 3 are separated with a nicely appointed main bath. We added cathedral ceilings in great room! This home is situated on a cul-de-sac.

416 Max Kolbe Circle

Cottage Grove, WI 53527

TIM O'BRIEN
homes

Call Today
(608) 401-4769



First Floor

The information, text, graphics and links provided herein are provided by Tim O'Brien Homes as a convenience to its customers. Tim O'Brien Homes does not guarantee the accuracy or completeness of the information, text, graphics, links and other items contained on this website or any other website. All prices, promotions and specifications are subject to change at any time without notice based on the discretion of Tim O'Brien Homes.

