

3185 Drumlin Ridge

Cottage Grove, WI 53527

TIM O'BRIEN
homes

Call Today
(608) 401-4769





UNDER CONSTRUCTION



PRICED AT

\$499,900

Neighborhood: Shady Grove
3190 Drumlin Rdg Dr, Cottage Grove, WI

-  3 Bedrooms
-  2.5 Bathrooms
-  2,035 Sq. Ft.
-  2 Car Garage

Welcome to the Twin Homes in Shady Grove!

Step into comfort and elegance with the Twin Homes in Shady Grove. As you enter through the first floor, you are greeted by a welcoming foyer, a convenient powder room, and a staircase leading to the second floor. Moving further, you'll find a spacious great room and a modern kitchen, and dinette, complete with a pantry and a view of the deck. Adjacent to the kitchen is a roomy rear foyer that leads to a two-car garage.

Upstairs, the second floor features two secondary bedrooms, a spacious laundry room, a half bathroom, and a luxurious primary suite. The primary suite boasts a private bathroom and a walk-in closet, providing ample space for relaxation and storage.

The information, text, graphics and links provided herein are provided by Tim O'Brien Homes as a convenience to its customers. Tim O'Brien Homes does not guarantee the accuracy or completeness of the information, text, graphics, links and other items contained on this website or any other website. All prices, promotions and specifications are subject to change at any time without notice based on the discretion of Tim O'Brien Homes.

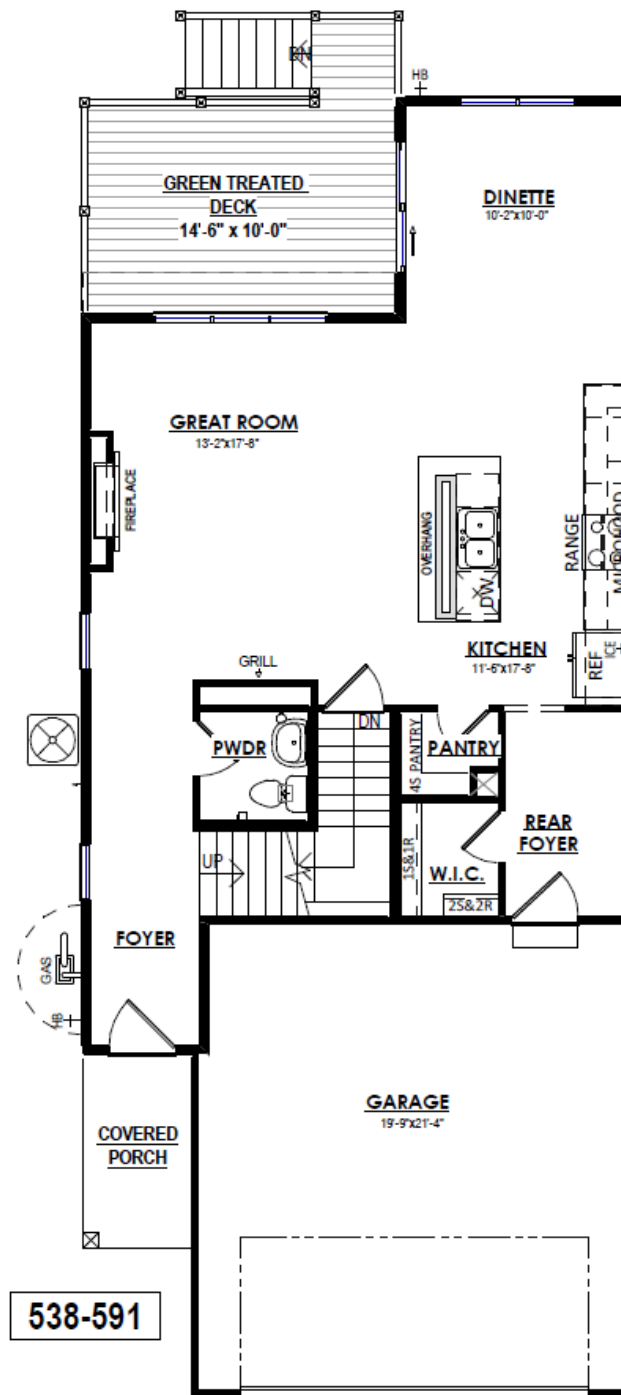


3185 Drumlin Ridge

Cottage Grove, WI 53527

TIM O'BRIEN
homes

Call Today
(608) 401-4769



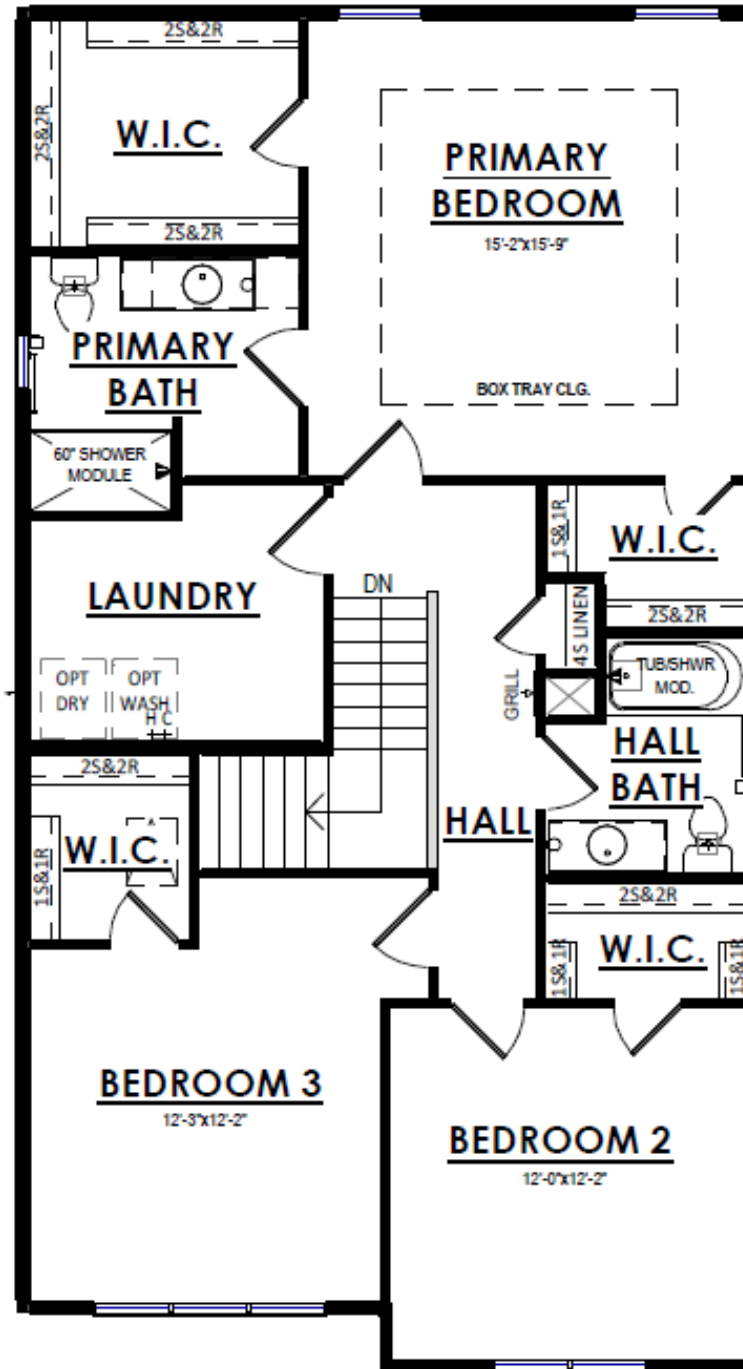
The information, text, graphics and links provided herein are provided by Tim O'Brien Homes as a convenience to its customers. Tim O'Brien Homes does not guarantee the accuracy or completeness of the information, text, graphics, links and other items contained on this website or any other website. All prices, promotions and specifications are subject to change at any time without notice based on the discretion of Tim O'Brien Homes.



3185 Drumlin Ridge

Cottage Grove, WI 53527

Call Today
(608) 401-4769



The information, text, graphics and links provided herein are provided by Tim O'Brien Homes as a convenience to its customers. Tim O'Brien Homes does not guarantee the accuracy or completeness of the information, text, graphics, links and other items contained on this website or any other website. All prices, promotions and specifications are subject to change at any time without notice based on the discretion of Tim O'Brien Homes.

