

# 3167 Drumlin Ridge Drive

Cottage Grove, WI 53527

TIM O'BRIEN  
homes

Call Today  
(608) 401-4769

MOVE-IN READY

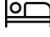





PRICED AT

## \$449,900

**Neighborhood:** Shady Grove

3190 Drumlin Rdg Dr, Cottage Grove, WI

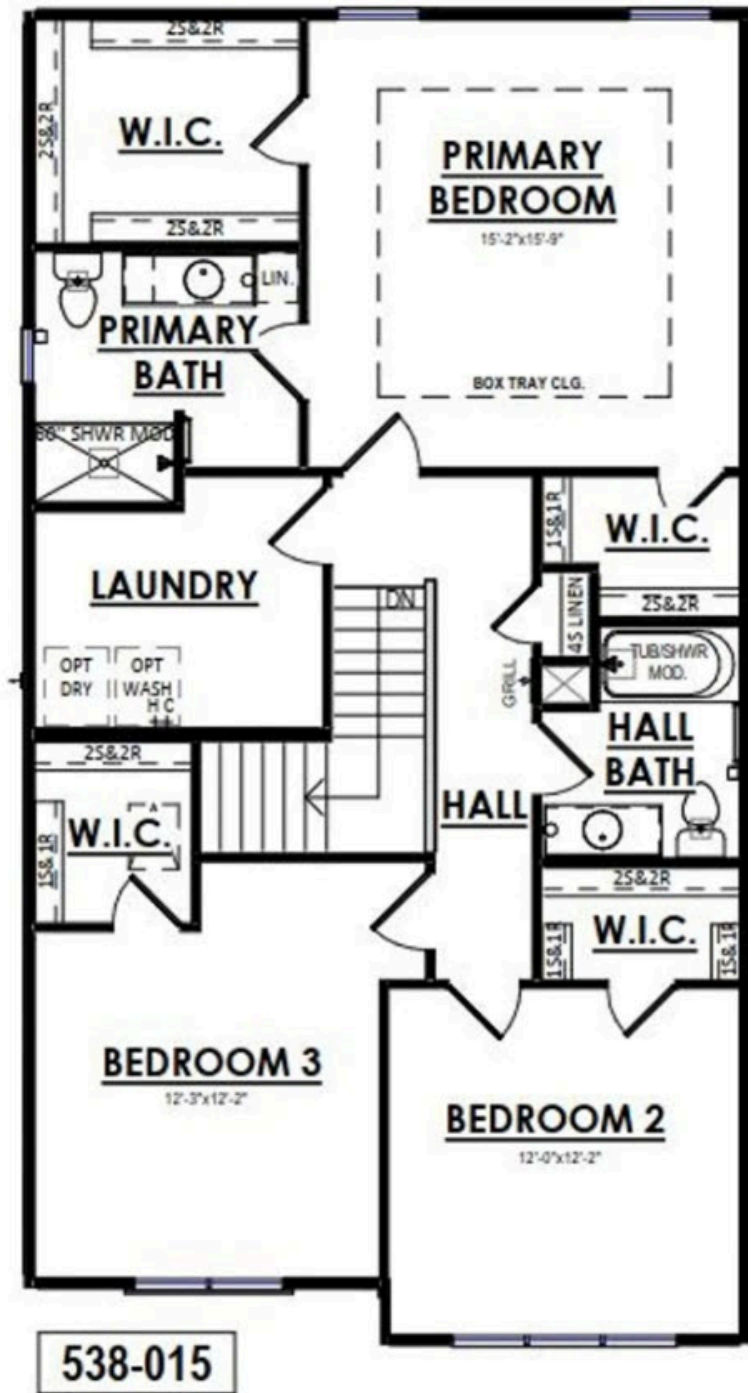
-  3 Bedrooms
-  2.5 Bathrooms
-  2,035 Sq. Ft.
-  2 Car Garage

Welcome family and friends into your new energy-efficient green built home with open concept, featuring inviting spaces with an open concept main level. Plenty of room in this home for entertaining, playing games, watching TV or relaxing by your fireplace. This twin home features solid counter tops and a full suite of stainless appliances overlooking the bright & sunny dining room. The deck is perfect for relaxing or entertaining with a beautiful view. Upstairs features a spacious primary bedroom with a walk in closet and ensuite bathroom. The other 2 bedrooms also nicely sized and both having walk in closets. You will appreciate the conveniently located large upper floor laundry room. Tons of potential for a future finished basement with large windows and exposure.

# 3167 Drumlin Ridge Drive

Cottage Grove, WI 53527

Call Today  
(608) 401-4769



# 3167 Drumlin Ridge Drive

Cottage Grove, WI 53527

TIM O'BRIEN  
homes

Call Today  
(608) 401-4769



The information, text, graphics and links provided herein are provided by Tim O'Brien Homes as a convenience to its customers. Tim O'Brien Homes does not guarantee the accuracy or completeness of the information, text, graphics, links and other items contained on this website or any other website. All prices, promotions and specifications are subject to change at any time without notice based on the discretion of Tim O'Brien Homes.

