

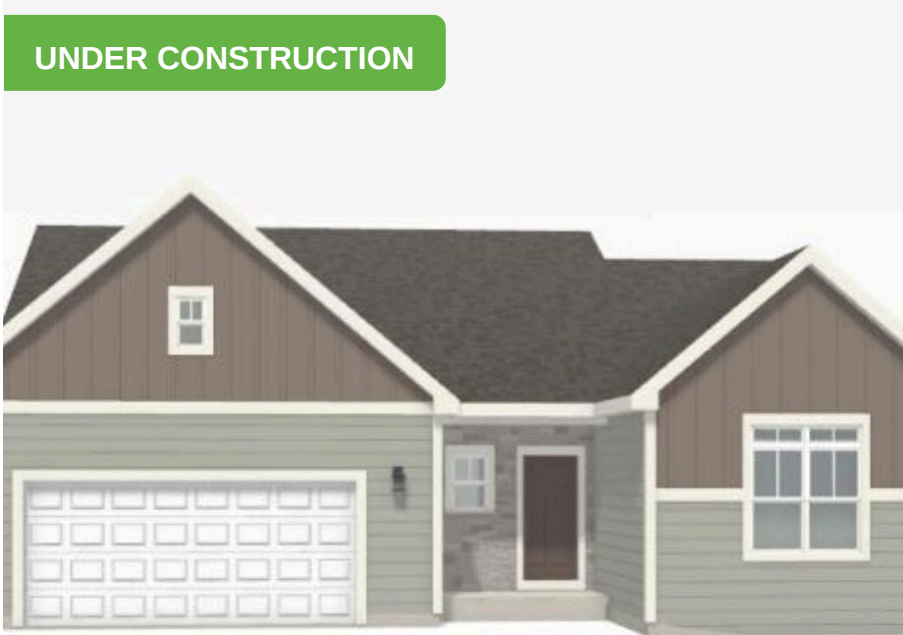
542 Shady Street

Cottage Grove, WI 53527

TIM O'BRIEN
homes

Call Today
(608) 401-4769

UNDER CONSTRUCTION



PRICED AT

\$578,875

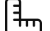
Neighborhood: Shady Grove


3190 Drumlin Rdg Dr, Cottage Grove, WI

Home Plan: The Lavender

 3 Bedrooms

 2.0 Bathrooms

 1,734 Sq. Ft.

 2 Car Garage

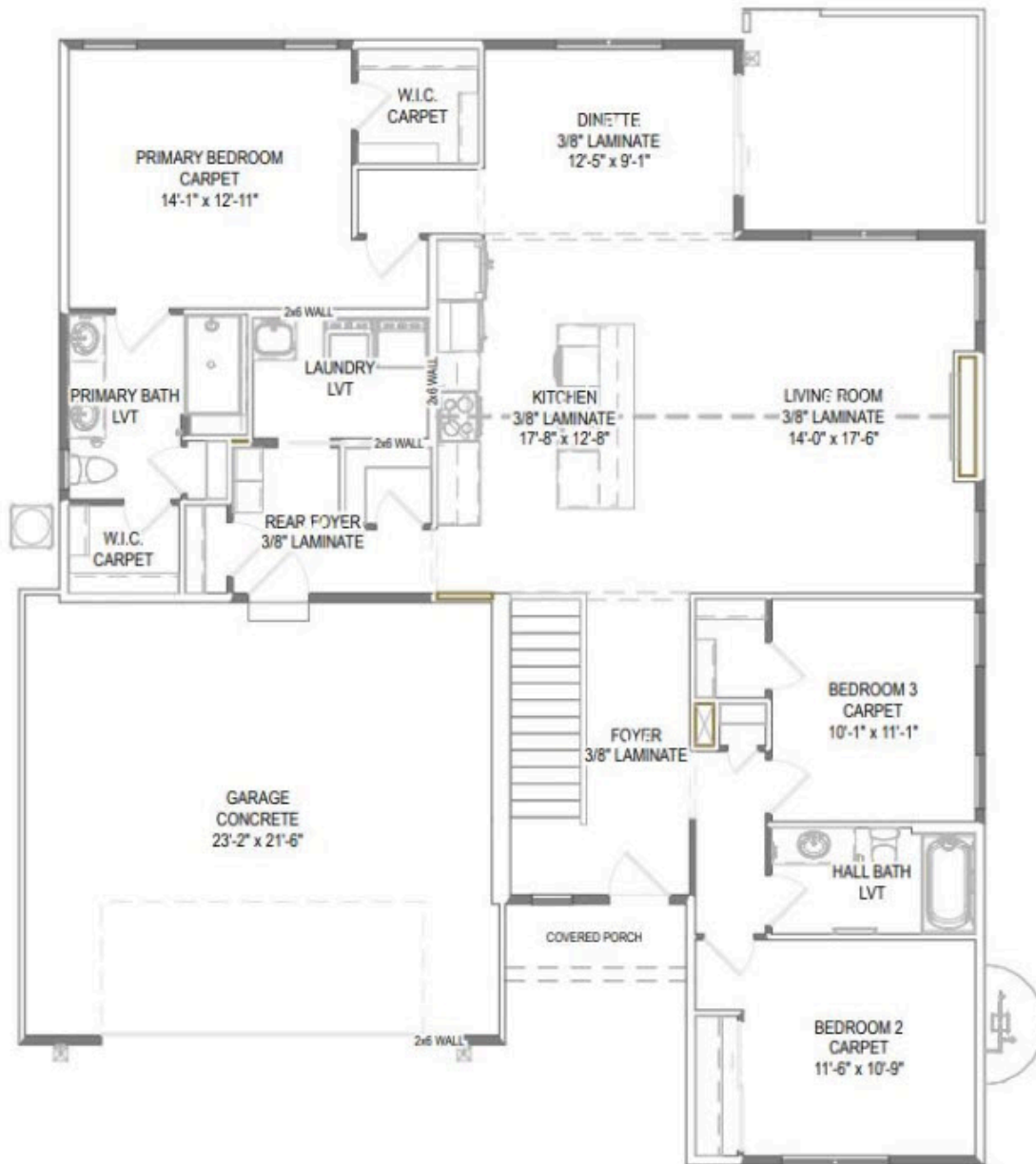
Under Construction, completion September 2025. Tim O'Brien Homes Lavender farmhouse elevation ranch plan welcomes you with a covered front porch and open concept floorplan. Vaulted ceilings in kitchen and great room. Enjoy the cozy fireplace in the great room. The kitchen features quartz countertops, island, range hood and walk in pantry making it a chef's dream. The sunny dining space overlooks the 12x11 deck and landscaped yard. This split floor plan's primary bedroom features two large walk in closets and en suite bath with tile shower with bench. This home features two additional bedrooms and full bath, a spacious rear foyer and separate laundry room and a 2 car garage

542 Shady Street

Cottage Grove, WI 53527

TIM O'BRIEN
homes

Call Today
(608) 401-4769



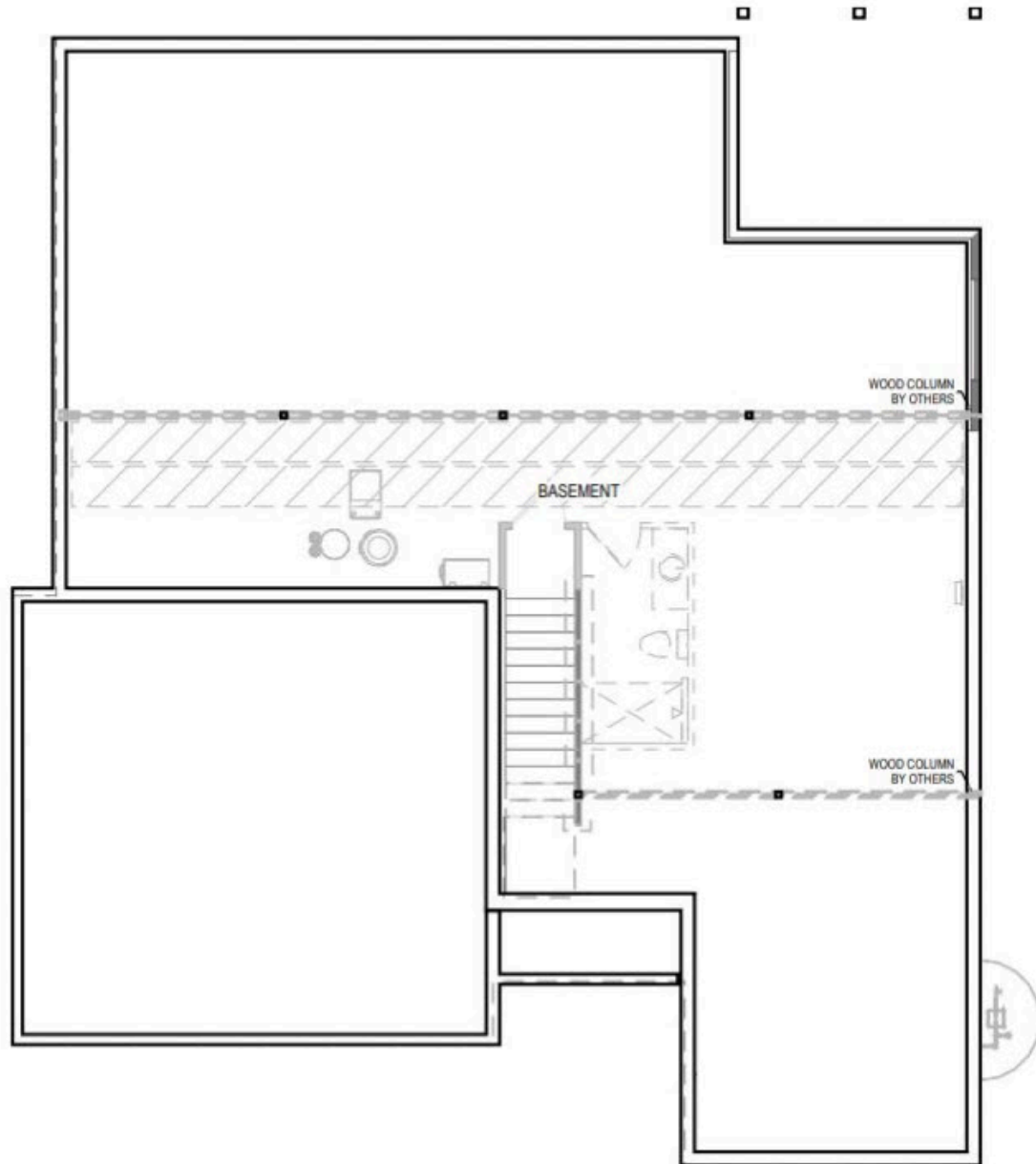
First Floor

542 Shady Street

Cottage Grove, WI 53527

TIM O'BRIEN
homes

Call Today
(608) 401-4769



Basement