

The Rockwell

Available in 2 Neighborhoods

TIM O'BRIEN
homes

Call Today
(262) 239-7342



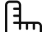
Call for Price


Home Style: First Floor Primary

2 Elevations Available

 2 Bedroom

 2 Bathrooms

 1,491 Sq. Ft.

 2 Car Garage

 49 HERS Score

Welcome to The Rockwell, a 1,491 sq. ft. alley-load home designed for comfort and efficiency. The covered front porch leads into a well-planned foyer, where you'll find two bedrooms, including a primary suite with a walk-in closet and private bath. Continuing down the foyer, a half bath provides convenience for guests before you step into the heart of the home. The open-concept great room and kitchen offer a seamless space for entertaining, complete with a large pantry for ample storage. At the rear of the home, the rear foyer connects to the laundry area, ensuring a functional flow to daily routines. Finally, the attached two-car garage sits at the back, maintaining the home's beautiful curb appeal while offering easy access.



The information, text, graphics and links provided herein are provided by Tim O'Brien Homes as a convenience to its customers. Tim O'Brien Homes does not guarantee the accuracy or completeness of the information, text, graphics, links and other items contained on this website or any other website. All prices, promotions and specifications are subject to change at any time without notice based on the discretion of Tim O'Brien Homes.

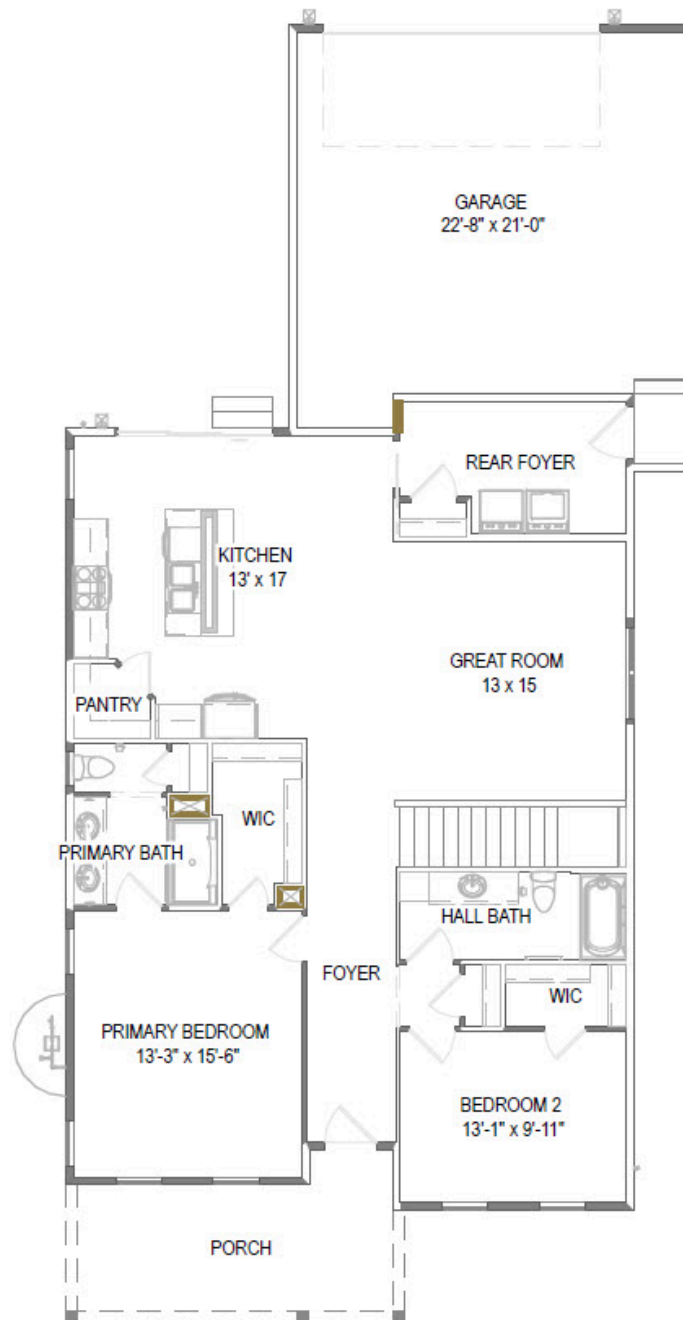


The Rockwell

Available in 2 Neighborhoods

TIM O'BRIEN
homes

Call Today
(262) 239-7342



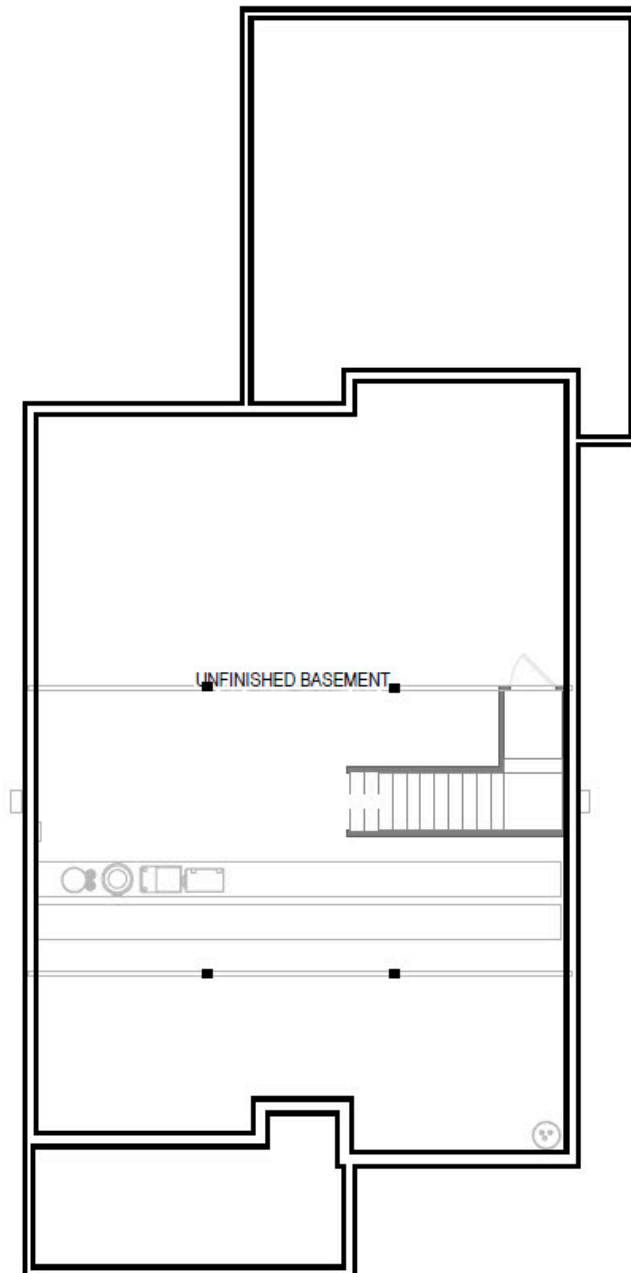
First Floor

The Rockwell

Available in 2 Neighborhoods

TIM O'BRIEN
homes

Call Today
(262) 239-7342



Basement