



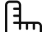
## Call for Price

**Home Style:** Two-Story

3 Elevations Available

 3 Bedroom

 2.5 Bathrooms

 1,989 Sq. Ft.

 2 - 3 Car Garage

 49 HERS Score

The O'Keefe is a thoughtfully designed alley-load home that blends open-concept living with smart functionality. A large covered porch welcomes you inside, where you are immediately greeted by the spacious great room, seamlessly flowing into the kitchen—perfect for entertaining or everyday gatherings. Just off the entryway, a powder room and flex room offer additional versatility, whether you need a home office, playroom, or guest space. Beyond the kitchen, a walk-in pantry provides ample storage, leading to the rear foyer, which connects to the attached two-car garage for effortless access. Upstairs, the primary bedroom offers a private retreat, accompanied by two additional bedrooms. A centrally located laundry room ensures everyday convenience, making chores a breeze.

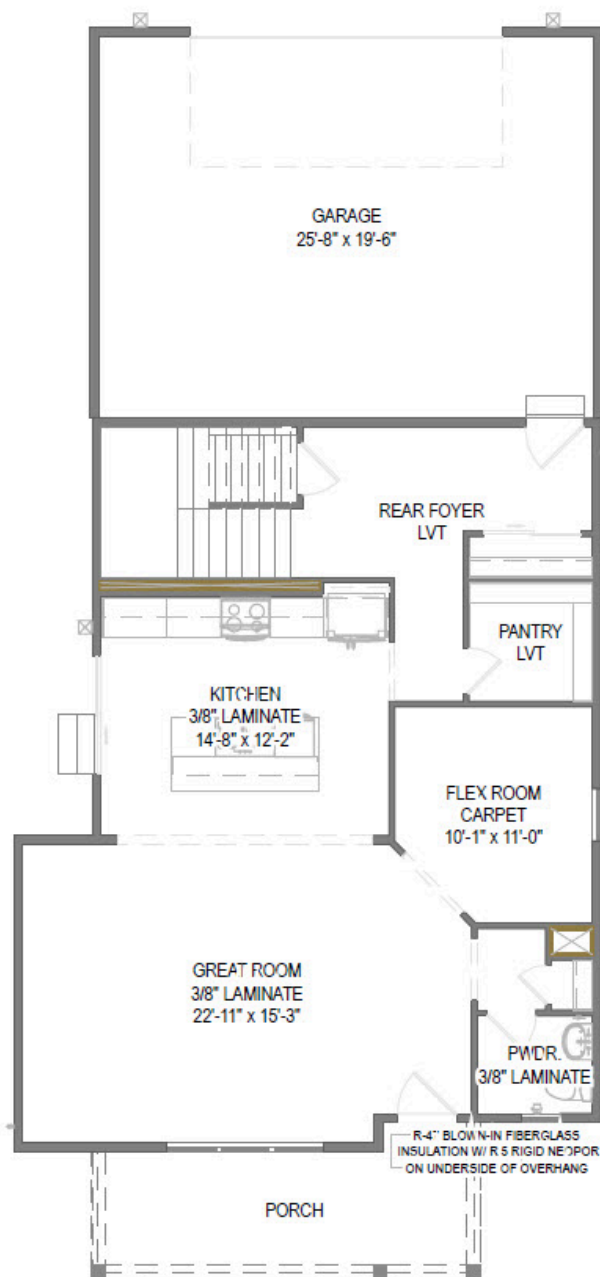


# The O'Keeffe

Available in 2 Neighborhoods

TIM O'BRIEN  
homes

Call Today  
(262) 239-7342



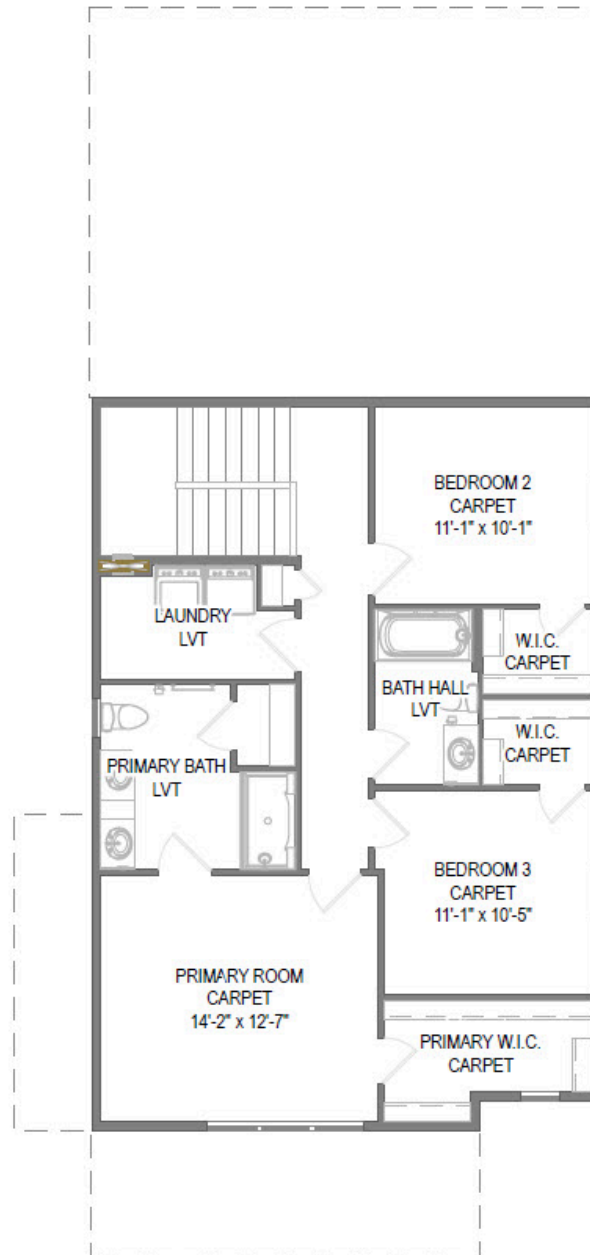
First Floor

# The O'Keeffe

Available in 2 Neighborhoods

TIM O'BRIEN  
homes

Call Today  
(262) 239-7342



Second Floor

The information, text, graphics and links provided herein are provided by Tim O'Brien Homes as a convenience to its customers. Tim O'Brien Homes does not guarantee the accuracy or completeness of the information, text, graphics, links and other items contained on this website or any other website. All prices, promotions and specifications are subject to change at any time without notice based on the discretion of Tim O'Brien Homes.

