

The Kahlo

Available in 2 Neighborhoods

TIM O'BRIEN
homes

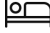
Call Today
(262) 239-7342



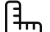
Call for Price

Home Style: Single Family

3 Elevations Available

 2 - 4 Bedroom

 2.5 Bathrooms

 1,872 Sq. Ft.

 2 Car Garage

 49 HERS Score

The Kahlo is a thoughtfully structured two-story alley plan, boasting two bedrooms and two and a half bathrooms. As you step inside, you're immediately welcomed by a spacious living area, integrating the Great Room, Dinette, and a Kitchen furnished with a large corner walk-in pantry. The staircase leading to the upper level is strategically placed in the Rear Foyer at the back of the home. The upper level houses both bedrooms, including a substantial Primary Suite that flaunts an oversized walk-in closet and a lavish bathroom. Adding to the functionality, the Laundry Room is also located upstairs, along with an additional bedroom and full bathroom. For those requiring more living space or bedrooms, an option to expand over the garage is available.



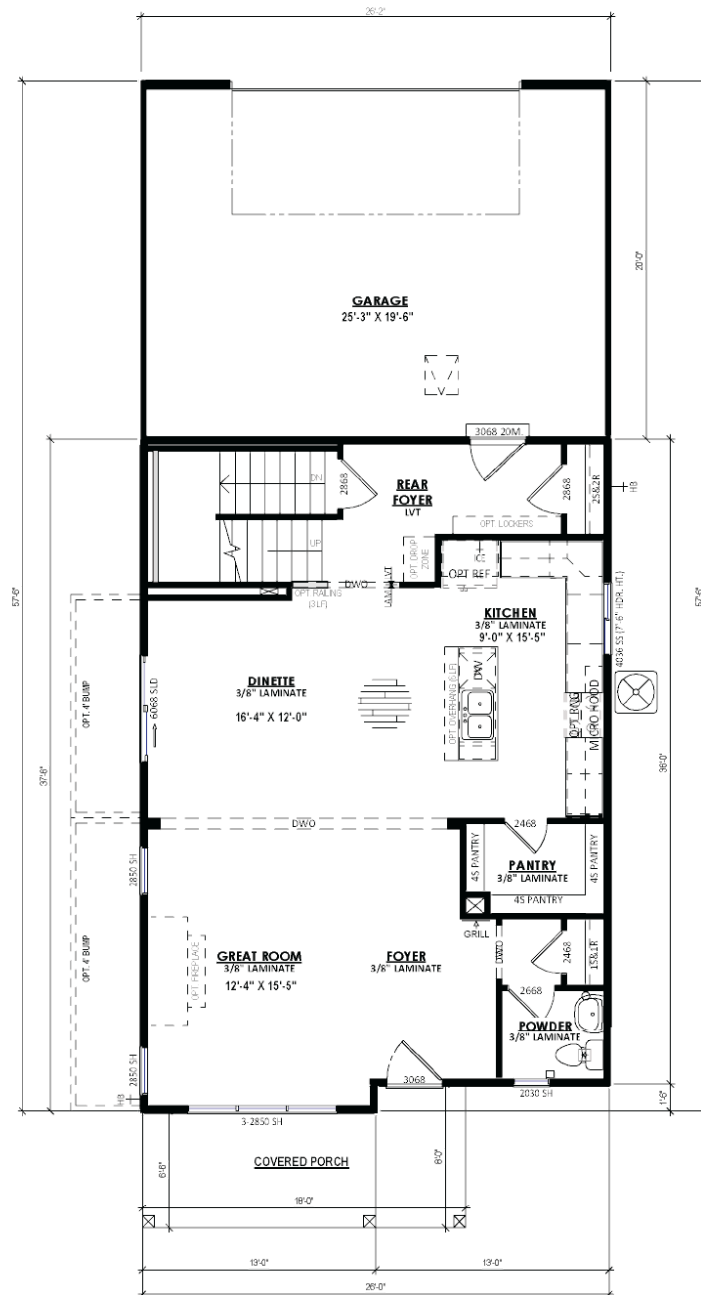
The information, text, graphics and links provided herein are provided by Tim O'Brien Homes as a convenience to its customers. Tim O'Brien Homes does not guarantee the accuracy or completeness of the information, text, graphics, links and other items contained on this website or any other website. All prices, promotions and specifications are subject to change at any time without notice based on the discretion of Tim O'Brien Homes.



The Kahlo

Available in 2 Neighborhoods

Call Today
(262) 239-7342

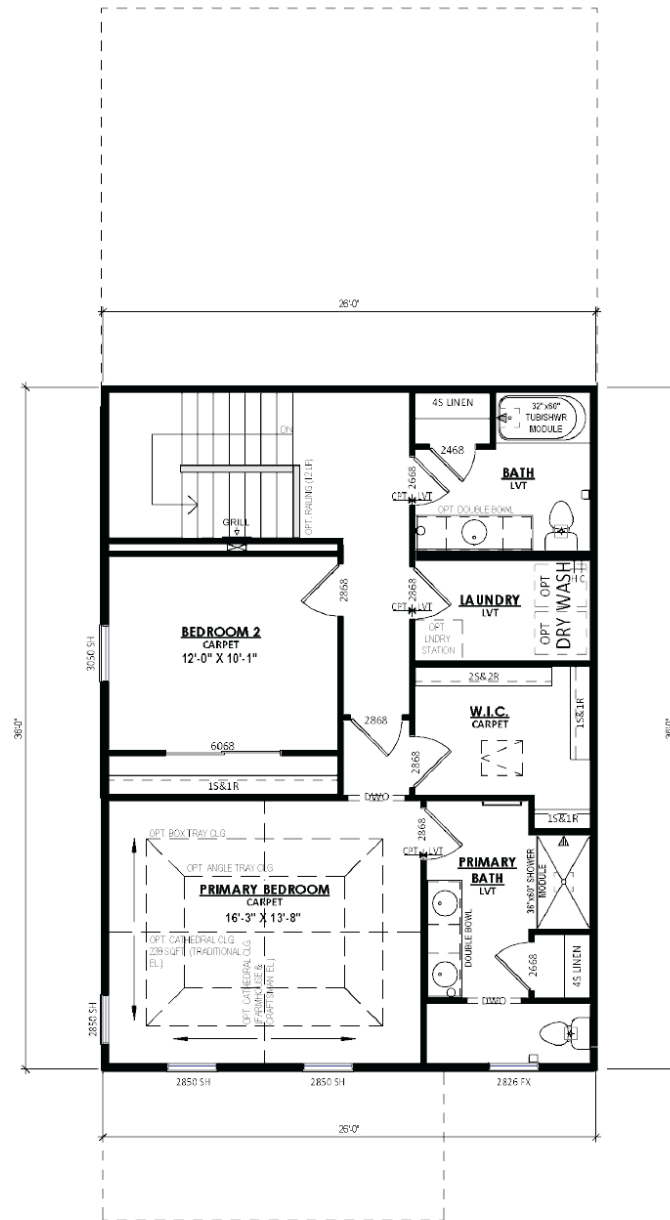


FIRST FLOOR PLAN

The Kahlo

Available in 2 Neighborhoods

Call Today
(262) 239-7342



SECOND FLOOR PLAN

