

The Beckett

Available in 2 Neighborhoods

TIM O'BRIEN
homes

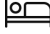
Call Today
(262) 239-7342

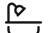


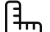
Call for Price

Home Style: None

2 Elevations Available

 1 - 2 Bedroom

 1 - 2.5 Bathrooms

 1,003 Sq. Ft.

 2 Car Garage

 49 HERS Score

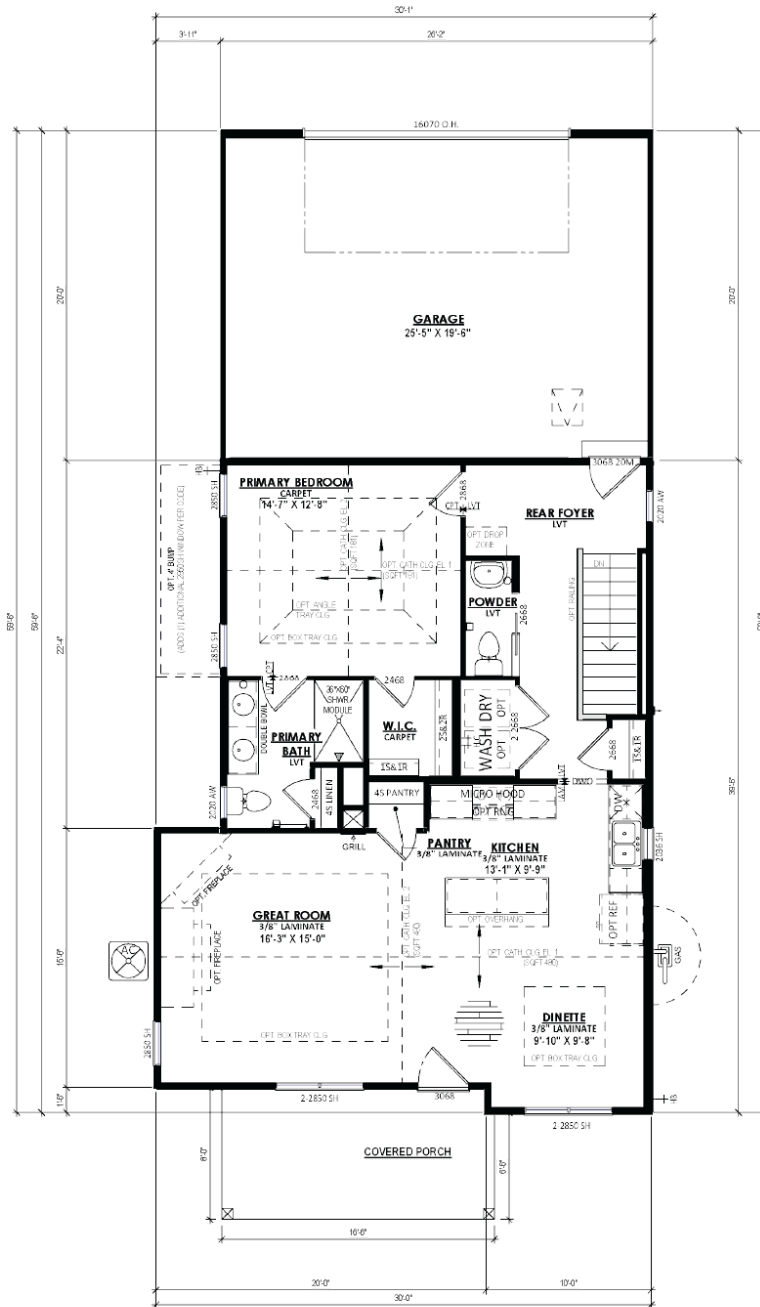
The Beckett is a neatly arranged, one-story home plan designed for easy living with one bedroom and one bathroom. The front of the home hosts an open concept layout incorporating the Great Room, Dinette, and Kitchen - an inviting space for relaxation and dining. Further inside, the Rear Foyer accommodates a handy Laundry space, a Powder Room, and provides convenient access to the garage. Nestled in the contrasting rear corner of the home, you'll find the comfortable Primary Suite, complete with a walk-in closet and an adjoining en suite bathroom.

The Beckett

Available in 2 Neighborhoods



Call Today
(262) 239-7342



FIRST FLOOR PLAN

The information, text, graphics and links provided herein are provided by Tim O'Brien Homes as a convenience to its customers. Tim O'Brien Homes does not guarantee the accuracy or completeness of the information, text, graphics, links and other items contained on this website or any other website. All prices, promotions and specifications are subject to change at any time without notice based on the discretion of Tim O'Brien Homes.

